

Comprehensive Annual Financial Report



FISCAL YEAR ENDED
OCT. 31, 2017

CITY OF RAYMORE, MISSOURI

(This page has been left blank intentionally)



City of Raymore, Missouri
Comprehensive Annual Financial Report
For Fiscal Year
Ended October 31, 2017

Prepared by
Cynthia Watson, Finance Director
Elisa Williams, Assistant Finance Director

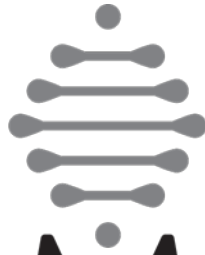
(This page has been left blank intentionally)

CITY OF RAYMORE, MISSOURI
 COMPREHENSIVE ANNUAL FINANCIAL REPORT
 TABLE OF CONTENTS

	Page
INTRODUCTORY SECTION	
Principal Officials	1
Organizational Chart	2
Transmittal Letter	3 - 6
Certificate of Achievement	7
FINANCIAL SECTION	
Independent Auditors' Report	8 - 10
Management's Discussion and Analysis	11 - 22
Basic Financial Statements	
Government-Wide Financial Statements	
Statement of Net Position	23 - 24
Statement of Activities	25 - 26
Fund Financial Statements	
Balance Sheet - Governmental Funds	27
Reconciliation of the Balance Sheet of Governmental Funds to the Statement of Net Position	28 - 29
Statement of Revenues, Expenditures, and Changes in Fund Balances - Governmental Funds	30 - 31
Reconciliation of the Statement of Revenues, Expenditures, and Changes in Fund Balances of Governmental Funds to the Statement of Activities	32 - 33
Statement of Net Position - Proprietary Funds	34 - 35
Statement of Revenues, Expenses, and Changes in Net Position - Proprietary Funds	36
Statement of Cash Flows - Proprietary Funds	37 - 38
Statement of Net Position - Fiduciary Funds	39
Notes to Financial Statements	40 - 73
Required Supplementary Information	
Budgetary Comparison Schedule - General Fund	74 - 75
Budgetary Comparison Schedule - Major Special Revenue Funds	76
Notes to Required Supplementary Information	77
Schedule of Employer's Contributions	78
Schedule of Changes in Net Pension Liability	79
Other Supplementary Information	
Nonmajor Governmental Funds - Combined Balance Sheet	80
Nonmajor Governmental Funds - Combined Statement of Revenues, Expenditures, and Changes in Fund Balances	81
Budgetary Comparison Schedule - Major Debt Service Fund	82
Budgetary Comparison Schedule - Major Capital Improvement Fund	83
Budgetary Comparison Schedule - Nonmajor Governmental Funds	84 - 85

CITY OF RAYMORE, MISSOURI
 COMPREHENSIVE ANNUAL FINANCIAL REPORT
 TABLE OF CONTENTS

	Page
STATISTICAL SECTION (Unaudited)	
Financial Trends	
Net Assets/Position by Component	86
Changes in Net Assets/Position	87 - 88
Fund Balances of Governmental Funds	89
Changes in Fund Balances of Governmental Funds	90
Revenue Trends	
Governmental Activities Tax Revenues by Source	91
Direct and Overlapping Sales Tax Rates	92
Assessed Value and Estimated Actual Value of Taxable Property	93
Property Tax Rates - Direct and Overlapping Governments	94
Principal Property Taxpayers	95
Property Tax Levies and Collections	96
Debt Capacity	
Ratios of Outstanding Debt by Type	97
Ratios of General Bonded Debt Outstanding	98
Direct and Overlapping Governmental Activities Debt	99
Legal Debt Margin Information	100
Pledged Revenue Coverage	101
Demographic and Economic Information	
Demographic and Economic Statistics	102
Principal Employers	103
Operating Information	
Full-time Equivalent City Government Employees by Functions/Program	104
Operating Indicators by Function	105 - 106
Capital Asset Statistics by Function	107
 REPORT REQUIRED UNDER <i>GOVERNMENT AUDITING STANDARDS</i>	
Independent Auditors' Report on Internal Control Over Financial Reporting and on Compliance and Other Matters Based on an Audit of Financial Statements Performed in Accordance with <i>Government Auditing Standards</i>	108 - 109
 Schedule of Findings and Responses	110
Summary Schedule of Prior Audit Findings	111



RAYMORE

come home to more

Introductory Section

(This page has been left blank intentionally)



Elected Officials and Department Heads

Mayor and City Council

Kristofer P Turnbow, Mayor

Kevin Kellogg	Ward I
Reginald Townsend	Ward I
Joseph Burke III	Ward II
Derek Moorhead (Mayor Pro Tempore)	Ward II
Kevin Barber	Ward III
Jay Holman	Ward III
Sonja Abdelgawad	Ward IV
John Berendzen	Ward IV

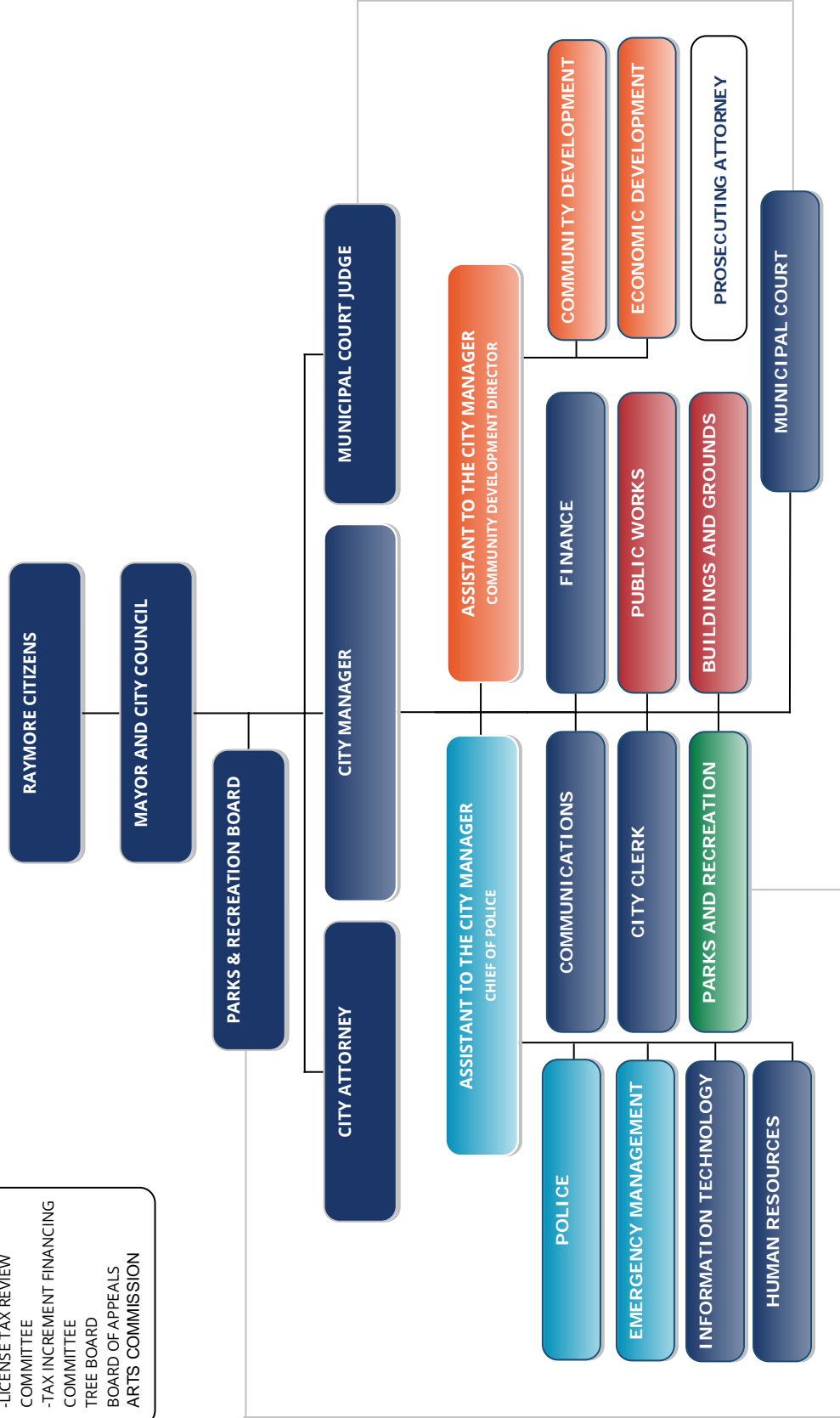
City Manager and Management Team

Jim Feuerborn, City Manager

Jan Zimmerman	Assistant to the City Manager/ Chief of Police
Jim Cadoret	Assistant to the City Manger/ Community Development Director
Mike Ekey	Communications Director
Cynthia Watson	Finance Director
Mike Krass	Public Works Director/City Engineer
Matt Tapp	Economic Development Director
Nathan Musteen	Park & Recreation Director
Ryan Murdock	Emergency Management Director
Shawn Aulgur	Human Resources Manager
Jim Mayberry	Information Systems Manager
Donna Furr	Municipal Court Administrator
Jeanie Woerner	City Clerk

CITY OF RAYMORE

- VOLUNTEER BOARDS & COMMISSIONS**
- PLANNING & ZONING COMMISSION
 - BOARD OF ZONING ADJUSTMENT
 - LICENSE TAX REVIEW COMMITTEE
 - TAX INCREMENT FINANCING COMMITTEE
 - TREE BOARD
 - BOARD OF APPEALS
 - ARTS COMMISSION





February 16, 2018

To the Honorable Mayor, Members of the Governing Council, and Citizens of the City of Raymore.

State law requires that every general-purpose local government publish within six months of the close of each fiscal year a complete set of audited financial statements. This report is published to fulfill that requirement for the fiscal year ended October 31, 2017.

Management assumes full responsibility for the completeness and reliability of the information contained in this report, based upon a comprehensive framework of internal control that it has established for this purpose. Because the cost of internal control should not exceed anticipated benefits, the objective is to provide reasonable, rather than absolute, assurance that the financial statements are free of any material misstatements.

Dana F. Cole & Company, LLP, Certified Public Accountants, have issued an unmodified ("clean") opinion on the City of Raymore's financial statements for the year ended October 31, 2017. The independent auditors' report is located at the front of the financial section of this report.

Management's discussion and analysis (MD&A) immediately follows the independent auditors' report and provides a narrative introduction, overview, and analysis of the basic financial statements. This letter of transmittal is designed to complement the MD&A and should be read in conjunction with it.

Profile of the Government

Raymore was initially platted in 1874, incorporated on March 20, 1877, and became a Fourth Class City on March 5, 1988. The City is almost 20 square miles in area and is located approximately 23 miles south of Downtown Kansas City in the west central part of the state. The present estimated population of the City is 20,839. Located in northwestern Cass County along Interstate I-49, Raymore's recent history is dominated by rapid growth. Raymore is one of the fastest growing communities in the area, consistently placing among the top communities in monthly statistics of new residential construction in the Kansas City Metropolitan area. It is also empowered by state statute to extend its corporate limits by annexation, which it has done from time to time.

The City of Raymore is a council/manager form of government. The City adopted its Charter in November 1997. The City Council consists of eight members with two members elected from each of the four wards. The Council members serve two-year, staggered terms. The Mayor is elected at large and serves a three-year term and presides over meetings of the City Council. The City Manager is appointed by the Mayor with the advice and consent of the City Council as the chief administrative officer of the City.

The Council members set the policy for the City, and the City Manager is responsible for administering this policy in the day-to-day activities of City operations. Department Heads for municipal operations report to the City Manager.

The City of Raymore provides a wide range of services, including police, building and code enforcement; the construction and maintenance of highways, street, and other infrastructure; and parks and recreational activities. The City of Raymore owns and operates its own water and sewer system, which functions, in essence, as a department of the City of Raymore and, therefore, has been included as an integral part of the City of Raymore's financial statements.

The Council is required to adopt a final budget by no later than the close of the fiscal year. This annual budget serves as the foundation for the City of Raymore's financial planning and control. The budget is prepared by fund and department (e.g., police). Departmental transfers not changing fund balance may be made with approval of the City Manager and Finance Director. Transfers between departments, however, need special approval from the governing council.

Factors affecting Financial Condition

Local Economy. The City of Raymore is mostly residential with a large variety of housing. The City continues to be one of the fastest growing communities in Missouri over the past sixteen years. The City of Raymore is served by two state highways (58 and J) and Interstate I-49 providing convenient commuter access to the various cultural, educational, social, industrial, and marketing institutions of the region.

The major retailers in the City of Raymore are Wal-Mart, Sam's Club, Price Chopper, and Lowe's. Many major infrastructure projects are completed or near completion. The I-49 interchange in the southwestern part of Raymore opened in 2010. The project has provided the groundwork for significant industrial, commercial, and residential development in that corridor. This has also stimulated interest in other developments throughout the City. During 2017 the City recognized four new businesses to the community: Kay Jewelers, Panda Express, Qdoba Restaurant, and Firehouse Subs in the new Raymore Marketplace shopping center located at the southeast corner of 58 Hwy and Dean Ave.

Long-Term Financial Planning. Fiscal year 2017 had significant growth in residential housing starts. However the rest of the revenues continue to be a year of slow recovery. The City believes its revenue base with the General Fund is showing positive stabilization. However, the City again focused on conservative revenue projections, as well as cost containment efforts put in place in 2009 in order to meet fiscal year priorities and service requirements to its residents and prepare the City for long-term financial health and stability.

These efforts continued through the fiscal year 2018 budget process to ensure sound financial position. The General Fund expenditures were budgeted with an increase of 7.75% over the previous year's budget. The City is still addressing the Mayor and Council priorities and maintaining or expanding current service levels.

The City of Raymore's policy is to maintain a contingency fund balance in the three operating funds equal to 20 percent of annual operating expenditures. The fund balances in the General Fund, Parks Fund, and Enterprise Fund all fall within the policy guidelines set by Council for budgetary and planning purposes.

The City of Raymore prepares a five-year Capital Improvement Plan (CIP) for constructing, maintaining, and replacing the City's infrastructure. In preparing the budget, the City assesses needs, prioritizes public improvements, and projects costs. This budget is reviewed annually and projects are reprioritized and the financial condition of the City is evaluated.

Major Initiatives. The City of Raymore continues to be an active and growing community. Two-hundred fifty-seven building permits were issued during fiscal year 2017. Overall, development activity is increasing in the City. There are 301 homes currently under construction, 414 available lots that are site ready for issuance of a permit for a new home, and 8,180 dwelling units within the City. This is an increase of 229 over 2016.

As a growing community, the City recognizes the importance of maintaining the ability to provide services to all citizens. The Public Works staff is continuing to work with consultants to meet needs for the future. During 2010, the water master plan was updated. In 2012, staff secured an agreement with KCMO Water Services to increase water supply to meet demands for the foreseeable future. In 2018 the department directors will undertake a review and update all master plans to create a city-wide comprehensive plan.

During 2016, the City purchased 1,341 street lights for \$1,983,000 from Kansas City Power and Light. Raymore is the first City in the KC Metro area to do so. Despite having to contract out annual maintenance with an approved contractor, the City will still realize a considerable savings. In April 2016, Raymore voters approved the issuance of no tax increase debt to fund \$3,300,000 in street improvements and \$6,750,000 in parks improvements. In May, the City issued a General Obligation Bond issue of \$7,300,000 and a Special Obligation amount of \$4,090,000 to fund the street light purchase and refunding a 2006 Special Obligation issue.

Many of the 2016 General Obligation Bond projects have already been completed or are under way. To highlight a few: 58 Hwy was overlaid from Dean Ave. to J Hwy; the parking lot; a majority of the trail system was micro surfaced in Recreation Park; and opening of the Centerview building on Municipal Circle. Construction started on the Raymore Activity Center and the Foxridge Drive Extension. Design is underway for the Kentucky Road Relocation, Hawk Ridge Park, and T.B. Hanna Station Park Improvements.

Capital projects of approximately 5.7 million dollars were constructed during the year using proceeds of transportation, excise, capital improvement, enterprise capital maintenance, park sales taxes, storm water taxes, and BERP funds for buildings, street, storm sewer, sanitary sewer, and water improvements.

Early 2015, the City completed a biannual citizen survey which was immediately followed up by the City Council and management team working with a group from the University of Kansas Public Management Center to create a 10-year strategic plan. Council and the management team met with the group at a couple work sessions to start the process. The City hosted three Community Conversations during the month of February 2016 to get citizen input. During 2017, the City Council and management team finalized and adopted a new strategic goal based on the input from those Community Conversations that will drive the future decisions, goals, and budgets for the next ten years.

Financial Information. Management of the City is responsible for establishing and maintaining internal control designed to ensure that assets of the government are protected from loss, theft, or misuse and to ensure that adequate accounting data are compiled to allow for the preparation of financial statements in conformity with accounting principles generally accepted in the United States of America (GAAP). The internal controls are designed to provide reasonable, but not absolute, assurance that these objectives are met. The concept of reasonable assurance recognizes that (1) the cost of control should not exceed the benefits likely to be derived and (2) the valuation of costs and benefits require estimates and judgments by management.

The accounts of the City are organized on the basis of funds and account groups, each of which is considered to be a separate entity. The operations of each fund are accounted for by providing a separate set of self-balancing accounts, which comprise assets, liabilities, equities, revenues, and expenditures.

Budgetary control is maintained to ensure compliance with legal provisions embodied in the annual appropriated budget approved by the City Council. Activities of the General Fund, Capital Projects Funds, Special Revenue Funds, Debt Service Fund, Internal Service Funds, and Enterprise Funds are included in the annual appropriated budget. The level of budget control is established at the department level with Finance closely monitoring weekly activity.

Awards and Acknowledgements

The Government Finance Officers Association of the United States and Canada (GFOA) awarded a Certificate of Achievement for Excellence in Financial Reporting to the City of Raymore, Missouri, for its Comprehensive Annual Financial Report (CAFR) for the fiscal year ended October 31, 2016. This was the seventh year that the City achieved this prestigious award. In order to be awarded a Certificate of Achievement, a government must publish an easily readable and efficiently organized Comprehensive Annual Financial Report. This report must satisfy both generally accepted accounting principles and applicable legal requirements.

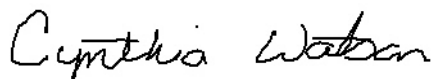
A Certificate of Achievement is valid for a period of one year only. We believe our current Comprehensive Annual Financial Report continues to meet the Certificate of Achievement Program's requirements and we are submitting it to the GFOA to determine its eligibility for another certificate.

In addition, the City also received for the thirteenth consecutive year the GFOA's Distinguished Budget Presentation Award for its annual budget document dated October 31, 2017. In order to qualify for the Distinguished Budget Presentation Award, the government's budget document had to be judged proficient as a policy document, a financial plan, an operations guide, and a communications device.

The preparation of this comprehensive annual financial report could not have been accomplished without the efficient and dedicated services of Assistant Finance Director, Elisa Williams. I wish to express my appreciation to all departments that help us to provide the statistical information. Special thanks to the firm Dana F. Cole & Company, LLP, for their thorough and competent service and cooperation in the conduct of the annual audit and assistance in making this report available.

Finally, I would like to acknowledge Jim Feuerborn, City Manager, and the governing council for their unfailing support for maintaining the highest standards of professionalism in the management of the City of Raymore's financial operations.

Respectfully submitted,



Cynthia Watson
Finance Director



Government Finance Officers Association

**Certificate of
Achievement
for Excellence
in Financial
Reporting**

Presented to

**City of Raymore
Missouri**

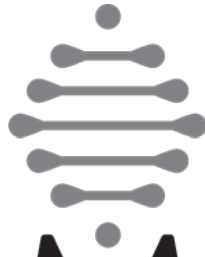
For its Comprehensive Annual
Financial Report
for the Fiscal Year Ended

October 31, 2016

Christopher P. Morrill

Executive Director/CEO

(This page has been left blank intentionally)



RAYMORE

come home to more

Financial Section

(This page has been left blank intentionally)



**DANA F. COLE
& COMPANY_{LLP}**
CERTIFIED PUBLIC ACCOUNTANTS

INDEPENDENT AUDITORS' REPORT

To the Honorable Mayor and
Members of the City Council
City of Raymore, Missouri

Report on the Financial Statements

We have audited the accompanying financial statements of the governmental activities, the business-type activities, the aggregate discretely presented component units, each major fund, and the aggregate remaining fund information of the City of Raymore, Missouri, as of and for the year ended October 31, 2017, and the related notes to the financial statements, which collectively comprise the City's basic financial statements as listed in the table of contents.

Management's Responsibility for the Financial Statements

Management is responsible for the preparation and fair presentation of these financial statements in accordance with accounting principles generally accepted in the United States of America; this includes the design, implementation, and maintenance of internal control relevant to the preparation and fair presentation of financial statements that are free from material misstatement, whether due to fraud or error.

Auditors' Responsibility

Our responsibility is to express opinions on these financial statements based on our audit. We conducted our audit in accordance with auditing standards generally accepted in the United States of America and the standards applicable to financial audits contained in *Government Auditing Standards*, issued by the Comptroller General of the United States. Those standards require that we plan and perform the audit to obtain reasonable assurance about whether the financial statements are free from material misstatement.

An audit involves performing procedures to obtain audit evidence about the amounts and disclosures in the financial statements. The procedures selected depend on the auditor's judgment, including the assessment of the risks of material misstatement of the financial statements, whether due to fraud or error. In making those risk assessments, the auditor considers internal control relevant to the entity's preparation and fair presentation of the financial statements in order to design audit procedures that are appropriate in the circumstances, but not for the purpose of expressing an opinion on the effectiveness of the entity's internal control. Accordingly, we express no such opinion. An audit also includes evaluating the appropriateness of accounting policies used and the reasonableness of significant accounting estimates made by management, as well as evaluating the overall presentation of the financial statements.

We believe that the audit evidence we have obtained is sufficient and appropriate to provide a basis for our audit opinions.

Opinions

In our opinion, the financial statements referred to above present fairly, in all material respects, the respective financial position of the governmental activities, the business-type activities, the aggregate discretely presented component units, each major fund, and the aggregate remaining fund information of the City of Raymore, Missouri, as of October 31, 2017, and the respective changes in financial position and, where applicable, cash flows thereof for the year then ended in accordance with accounting principles generally accepted in the United States of America.

Other Matters

Required Supplementary Information

Accounting principles generally accepted in the United States of America require that the management's discussion and analysis on pages 11 to 22, the budgetary comparison information on pages 74 to 77, the schedule of employer's contributions on page 78, and the schedule of changes in net pension liability on page 79 be presented to supplement the basic financial statements. Such information, although not a part of the basic financial statements, is required by the Governmental Accounting Standards Board, who considers it to be an essential part of financial reporting for placing the basic financial statements in an appropriate operational, economic, or historical context. We have applied certain limited procedures to the required supplementary information in accordance with auditing standards generally accepted in the United States of America, which consisted of inquiries of management about the methods of preparing the information and comparing the information for consistency with management's responses to our inquiries, the basic financial statements, and other knowledge we obtained during our audit of the basic financial statements. We do not express an opinion or provide any assurance on the information because the limited procedures do not provide us with sufficient evidence to express an opinion or provide any assurance.

Other Information

Our audit was conducted for the purpose of forming opinions on the financial statements that collectively comprise the City of Raymore, Missouri's basic financial statements. The introductory section, other supplementary information, and statistical section are presented for purposes of additional analysis and are not a required part of the basic financial statements.

The other supplementary information on pages 80 to 85 is the responsibility of management and was derived from and relates directly to the underlying accounting and other records used to prepare the basic financial statements. Such information has been subjected to the auditing procedures applied in the audit of the basic financial statements and certain additional procedures, including comparing and reconciling such information directly to the underlying accounting and other records used to prepare the basic financial statements or to the basic financial statements themselves, and other additional procedures in accordance with auditing standards generally accepted in the United States of America. In our opinion, the other supplementary information on pages 80 to 85 is fairly stated, in all material respects, in relation to the basic financial statements as a whole.

The introductory and statistical sections have not been subjected to the auditing procedures applied in the audit of the basic financial statements, and accordingly, we do not express an opinion or provide any assurance on them.

Other Reporting Required by Government Auditing Standards

In accordance with *Government Auditing Standards*, we have also issued our report dated February 16, 2018, on our consideration of the City of Raymore, Missouri's internal control over financial reporting and on our tests of its compliance with certain provisions of laws, regulations, contracts, and grant agreements and other matters. The purpose of that report is to describe the scope of our testing of internal control over financial reporting and compliance and the results of that testing, and not to provide an opinion on internal control over financial reporting or on compliance. That report is an integral part of an audit performed in accordance with *Government Auditing Standards* in considering the City of Raymore, Missouri's internal control over financial reporting and compliance.

Dana F Cole + Company, LLP

Overland Park, Kansas
February 16, 2018

CITY OF RAYMORE, MISSOURI MANAGEMENT'S DISCUSSION AND ANALYSIS

The financial department for the City of Raymore, Missouri, offers readers of the City of Raymore, Missouri's financial statements this narrative overview and analysis of the financial activities of the City of Raymore, Missouri, for the fiscal year ended October 31, 2017. We encourage readers to consider the information presented here in conjunction with the City's financial statements that follow this section. All amounts, unless otherwise indicated, are expressed in total dollars.

FINANCIAL HIGHLIGHTS

The assets of the City of Raymore, Missouri, exceeded its liabilities at the close of the most recent fiscal year by \$83,526,677. Of this amount, \$11,210,679 represents unrestricted net assets and may be used to fund ongoing obligations.

Total net assets decreased by \$3,024,300. This decrease is primarily attributable to depreciation on capital assets.

As of the close of the 2017 fiscal year, the City of Raymore, Missouri's combined governmental fund balances totaled \$21,619,063. This is an increase from the previous fiscal year fund balance by \$712,175, primarily due to the reduction of proceeds in the 2017 GO bond issue over those from the 2016 issue to cover expenses that will be paid in the next fiscal year. Revenues for the year and unassigned balances from prior years of the City were sufficient to pay current debt obligations, capital outlay, and current operating expenses.

Total long-term liabilities for the City of Raymore, Missouri, increased during the current fiscal year by \$3,475,086. The City serviced all long-term obligations as planned.

OVERVIEW OF THE FINANCIAL STATEMENTS

This discussion and analysis is intended to serve as an introduction to the City of Raymore, Missouri's basic financial statements. The City of Raymore, Missouri's basic financial statement comprises three components: (1) government-wide financial statements, (2) fund financial statements, and (3) notes to the financial statements. This report also contains required supplementary information and other supplementary information in addition to the basic financial statements themselves.

Government-Wide Financial Statements

The government-wide financial statements are designed to provide readers with a broad overview of the City of Raymore, Missouri's finances, in a manner similar to a private-sector business.

The statement of net position presents information on all of the City of Raymore, Missouri's assets and liabilities, with the difference between the two reported as net position. Over time and in consideration of other factors from the notes to the financial statements, increases or decreases in net position may serve as a useful indicator of whether the financial position of the City of Raymore, Missouri, is improving or deteriorating.

CITY OF RAYMORE, MISSOURI
MANAGEMENT'S DISCUSSION AND ANALYSIS

OVERVIEW OF THE FINANCIAL STATEMENTS (Continued)

Government-Wide Financial Statements (Continued)

The statement of activities presents information showing how the government's net position changed during the most recent fiscal year. All changes in net position are reported as soon as the underlying event giving rise to the change occurs, regardless of the timing of related cash flows. Thus, revenues and expenses are reported in this statement for some items that will only result in cash flows in future fiscal periods (e.g., uncollected taxes and earned but unused vacation leave).

The government-wide financial statements distinguish functions of the City of Raymore, Missouri, that are principally supported by taxes and intergovernmental revenues (governmental activities) from other functions that are intended to recover all or a significant portion of their costs through user fees and charges (business-type activities). The governmental activities of the City of Raymore, Missouri, include general government, public safety (police), public works, community development, economic development, and parks and recreation, among other departments. Business-type activities of the City of Raymore, Missouri, include water and sewer operations.

The government-wide financial statements can be found beginning on page 23 of this report.

Fund Financial Statements

A fund is a grouping of related accounts that is used to maintain control over resources that have been segregated for specific activities or objectives. The City of Raymore, Missouri, like other state and local governments, uses fund accounting to ensure and demonstrate compliance with finance-related legal requirements. All of the funds of the City of Raymore, Missouri, can be divided into three categories: governmental funds, proprietary funds, and fiduciary funds.

Governmental Funds

Governmental funds are used to account for essentially the same functions reported as the governmental activities in the government-wide financial statements. However, unlike the government-wide financial statements, governmental fund financial statements focus on near-term inflows and outflows of spendable resources, as well as on balances of spendable resources available at the end of the fiscal year. Such information may be useful in evaluating a government's near-term financing requirements.

Because the focus of governmental funds is narrower than that of the government-wide financial statements, it is useful to compare the information presented for governmental funds with similar information presented for governmental activities in the government-wide financial statements. By doing so, readers may better understand the long-term impact of the government's near-term financing decisions. Both the governmental fund balance sheet and the governmental fund statement of revenues, expenditures, and changes in fund balances provide a reconciliation to facilitate this comparison between governmental funds and governmental activities.

CITY OF RAYMORE, MISSOURI
MANAGEMENT'S DISCUSSION AND ANALYSIS

OVERVIEW OF THE FINANCIAL STATEMENTS (Continued)

Fund Financial Statements (Continued)

Governmental Funds (Continued)

The City of Raymore, Missouri, maintains 20 individual governmental funds in six categories. Information for the General Fund, Parks and Recreation Fund, Transportation Fund, Debt Service Fund, and Capital Improvement Fund are presented separately in the governmental fund balance sheet and in the governmental fund statement of revenues, expenditures, and changes in fund balances, while the other funds are categorized under the headings of Nonmajor Governmental Funds. Specific data from the remaining funds is presented beginning on page 80 of the financial statements.

The City of Raymore, Missouri, adopts an annual appropriated budget for its General Fund and other funds. A budgetary statement has been provided within this analysis for the General Fund to demonstrate compliance with this budget for City departments represented by that fund. Actual expenses for the fund are included in the net position report. The budgetary amounts presented here include any amendments presented to the City Council during the fiscal year.

**City of Raymore, Missouri's
Departmental Budget to Actual Expense Report**

Department	Final Budget	Actual
Administrative	1,257,559	1,144,011
Information Technology	477,777	465,464
Economic Development	211,857	179,967
Community Development	647,427	597,012
Engineering	397,331	357,504
Streets	791,871	787,195
Building and Grounds	303,716	283,316
Storm water	318,684	310,303
Court	157,813	146,560
Finance	590,385	588,014
Communications	199,890	184,563
Prosecuting Attorney	23,400	22,165
Police	3,881,618	3,661,648
Emergency Preparedness	129,868	122,146

CITY OF RAYMORE, MISSOURI
MANAGEMENT'S DISCUSSION AND ANALYSIS

OVERVIEW OF THE FINANCIAL STATEMENTS (Continued)

Fund Financial Statements (Continued)

Proprietary Funds

The City of Raymore, Missouri, maintains five proprietary departments. Of these departments, the Enterprise Fund is used to report the same functions presented as business-type activities in the government-wide financial statements and is the primary operational fund associated with this group. The City of Raymore, Missouri, uses the Enterprise Fund to account for its combined water, sewer, and trash operations.

Proprietary funds provide the same type of information as the government-wide financial statements, only in more detail.

The basic proprietary fund financial statements can be found beginning on page 34 of this report.

Fiduciary Funds

Fiduciary funds are used to account for resources held for the benefit of parties outside the government. Fiduciary funds are not reflected in the government-wide financial statement because the resources of those funds are not available to support the City of Raymore, Missouri's own programs.

The accounting used for fiduciary funds is much like that used for proprietary funds and the funds are primarily represented by accounts which are held in escrow for development or development conditions. The basic fiduciary funds financial statement can be found on page 39 of this report.

Notes to the Financial Statements

The notes provide additional information that is essential to a full understanding of the data provided in the government-wide and fund financial statements. The notes to the financial statements can be found beginning on page 40 of this report.

GOVERNMENT-WIDE FINANCIAL ANALYSIS

As noted earlier, net position may serve over time as a useful indicator of the City's financial position. In the case of the City of Raymore, Missouri, assets exceeded liabilities by \$83,526,677 at the close of the fiscal year. The largest portion of the City of Raymore, Missouri's net position, 77.3%, reflects its net investment in capital assets (land, buildings, machinery, equipment, and infrastructure) less any related debt used to acquire those assets that is still outstanding).

The City of Raymore, Missouri, uses these capital assets to provide services to citizens; consequently, these assets are not available for future spending. Although the City of Raymore, Missouri's investment in capital assets is reported net of related debt, it should be noted that the resources needed to repay this debt must be provided from other sources, since the capital assets themselves cannot be used to liquidate these liabilities.

CITY OF RAYMORE, MISSOURI
MANAGEMENT'S DISCUSSION AND ANALYSIS

GOVERNMENT-WIDE FINANCIAL ANALYSIS (Continued)

City of Raymore, Missouri
Statement of Net Position
(in thousands of dollars)

	Governmental Activities		Business-Type Activities		Total	
	2017	2016	2017	2016	2017	2016
ASSETS						
Current and other assets	22,554	22,968	7,007	6,826	29,561	29,794
Capital assets	61,252	60,100	26,645	27,537	87,897	87,637
Total assets	<u>83,806</u>	<u>83,068</u>	<u>33,652</u>	<u>34,363</u>	<u>117,458</u>	<u>117,431</u>
DEFERRED OUTFLOW OF RESOURCES	<u>747</u>	<u>2,341</u>	<u>742</u>	<u>112</u>	<u>1,489</u>	<u>2,453</u>
TOTAL ASSETS AND DEFERRED OUTFLOW OF RESOURCES	<u>84,553</u>	<u>85,409</u>	<u>34,394</u>	<u>34,475</u>	<u>118,947</u>	<u>119,884</u>
LIABILITIES						
Other liabilities	1,016	2,591	1,011	895	2,027	3,486
Long-term liabilities	31,975	28,951	889	438	32,864	29,389
Total liabilities	<u>32,991</u>	<u>31,542</u>	<u>1,900</u>	<u>1,333</u>	<u>34,891</u>	<u>32,875</u>
DEFERRED INFLOW OF RESOURCES	<u>175</u>	<u>404</u>	<u>354</u>	<u>54</u>	<u>529</u>	<u>458</u>
TOTAL LIABILITIES AND DEFERRED INFLOW OF RESOURCES	<u>33,166</u>	<u>31,946</u>	<u>2,254</u>	<u>1,387</u>	<u>35,420</u>	<u>33,333</u>
NET POSITION						
Net investment in capital assets	38,765	38,153	26,357	27,117	65,122	65,270
Restricted	801	908	87	85	888	993
Unrestricted	11,821	14,402	5,696	5,886	17,517	20,288
Total net position	<u>51,387</u>	<u>53,463</u>	<u>32,140</u>	<u>33,088</u>	<u>83,527</u>	<u>86,551</u>

CITY OF RAYMORE, MISSOURI
MANAGEMENT'S DISCUSSION AND ANALYSIS

GOVERNMENT-WIDE FINANCIAL ANALYSIS (Continued)

Governmental Activities

Current and Other Assets

Total current and other assets decreased \$414 thousand, which were used to reduce other liabilities.

Capital Assets

Capital assets, net of accumulated depreciation, increased \$1.2 million for budgeted capital outlay projects and purchases. The City added \$5.8 million in capital outlay, which was offset by \$4.6 million in noncash depreciation expense.

Other Liabilities

Other liabilities decreased \$1.2 million due to the decrease of accounts payable in the General Fund.

Net Pension Liability and related Deferred Outflows and Inflows of Resources

Net pension liability increased \$1.6 million and deferred outflow and inflow of resources decreased \$1.6 million and \$229 thousand, respectively. All are primarily due to the changes of benefit terms with the City's pension plan.

Long-Term Debt

Long-term debt increased \$994 thousand due to the new issuance of General Obligation Bonds.

Net Position

A portion of the City of Raymore, Missouri's net position represents resources that are subject to restrictions. The remaining balance of unrestricted net position may be used to meet the government's ongoing obligations to citizens and creditors. It should be noted that, in the operational funds General, Parks, and Enterprise, the City voluntarily "restricts" by policy 20% of the budgeted operational expenditures to ensure ongoing operations.

Business-Type Activities

Current and Other Assets

Total current and other assets increased \$181 thousand.

Capital Assets

Capital assets, net of accumulated depreciation, decreased \$892 thousand as capital outlay purchases was less than depreciation expense.

CITY OF RAYMORE, MISSOURI
MANAGEMENT'S DISCUSSION AND ANALYSIS

GOVERNMENT-WIDE FINANCIAL ANALYSIS (Continued)

Business-Type Activities (Continued)

Other Liabilities

Other liabilities increased \$116 thousand.

Net Pension Liability and related Deferred Outflows and Inflows of Resources

Net pension liability increased \$737 thousand and deferred outflow and inflow of resources increased \$630 thousand and \$300 thousand, respectively. All are primarily due to the changes of benefit terms with the City's pension plan.

Long-Term Debt

Long-term debt decreased \$130 thousand as regular payments were made on general obligation bonds.

At the end of the current fiscal year, the City of Raymore, Missouri, is able to report positive balances in all three categories of net position, both for the government as a whole, as well as for its separate governmental and business-type activities. The same situation held true for the prior fiscal year.

**City of Raymore, Missouri's
Statement of Changes in Net Position
(in thousands of dollars)**

	Governmental Activities		Business-Type Activities		Total	
	2017	2016	2017	2016	2017	2016
REVENUES						
Program revenues						
Charges for services	1,705	1,580	8,579	8,131	10,284	9,711
Operating grants and contributions	70	72			70	72
General revenues						
Property taxes	3,779	3,648			3,779	3,648
Sales taxes	6,993	6,326			6,993	6,326
Franchise taxes	2,132	2,199			2,132	2,199
Other taxes	882	1,179			882	1,179
Other revenue	329	306	54	51	383	357
Total revenues	<u>15,890</u>	<u>15,310</u>	<u>8,633</u>	<u>8,182</u>	<u>24,523</u>	<u>23,492</u>

CITY OF RAYMORE, MISSOURI
MANAGEMENT'S DISCUSSION AND ANALYSIS

GOVERNMENT-WIDE FINANCIAL ANALYSIS (Continued)

City of Raymore, Missouri's
Statement of Changes in Net Position (Continued)
(in thousands of dollars)

	Governmental Activities		Business-Type Activities		Total	
	2017	2016	2017	2016	2017	2016
EXPENSES						
Administration	1,577	1,310			1,577	1,310
Information technology	583	465			583	465
Economic development	241	161			241	161
Community development	895	537			895	537
Engineering	702	556			702	556
Streets and roads	4,386	4,238			4,386	4,238
Buildings and grounds	580	514			580	514
Storm water	507	326			507	326
Municipal Court	184	168			184	168
Finance	818	565			818	565
Communications	249				249	
Prosecuting attorney	22				22	
Police	4,893	3,535			4,893	3,535
Emergency Management	187	125			187	125
Parks and Recreation	1,897	1,545			1,897	1,545
Water and Sewer			8,765	8,582	8,765	8,582
Interest/fiscal/bond issue costs	1,061	1,052			1,061	1,052
Total expenses	<u>18,782</u>	<u>15,097</u>	<u>8,765</u>	<u>8,582</u>	<u>27,547</u>	<u>23,679</u>
CHANGE BEFORE TRANSFERS	(2,892)	213	(132)	(400)	(3,024)	(187)
TRANSFERS	<u>816</u>	<u>719</u>	<u>(816)</u>	<u>(719)</u>	<u> </u>	<u> </u>
CHANGE IN NET POSITION	(2,076)	932	(948)	(1,119)	(3,024)	(187)
NET POSITION, BEGINNING	53,463	52,531	33,088	34,207	86,551	86,738
NET POSITION, ENDING	<u>51,387</u>	<u>53,463</u>	<u>32,140</u>	<u>33,088</u>	<u>83,527</u>	<u>86,551</u>

CITY OF RAYMORE, MISSOURI
MANAGEMENT'S DISCUSSION AND ANALYSIS

GOVERNMENT-WIDE FINANCIAL ANALYSIS (Continued)

Governmental Activities

Governmental activities decreased the City of Raymore, Missouri's net position by \$2,075,819 and the business-type activities decreased by \$948,481, leading to a current-year decrease of \$3,024,300 in total net position.

Revenues increased in the governmental activities primarily due to increases in property and sales tax collections and also charges for services.

Expenses in the governmental activities increased by a total of approximately \$3,685,000, a large portion of which is due to taking into account the necessary adjustments for the LAGERS retirement plan and the net pension liability.

Business-Type Activities

Business-type activities decreased the City of Raymore, Missouri's net position by \$948,481 as costs associated with providing the services, including depreciation on capital assets, exceeded related revenues and transfers were made to the governmental activities.

FINANCIAL ANALYSIS OF THE GOVERNMENT'S FUNDS

As noted earlier, the City of Raymore, Missouri, uses fund accounting to ensure and demonstrate compliance with finance-related legal requirements.

Governmental Funds

The General Fund is the chief operating fund of the City of Raymore, Missouri. At the end of the current fiscal year, unassigned fund balance of the General Fund represented 81.4% of the entire \$3,536,610 General Fund balance. As a measure of the General Fund's liquidity, it may be useful to compare the total fund balance to total fund expenditures. Total fund balance represents 39.9% of the total General Fund expenditures of \$8,857,363.

The total fund balance in the City of Raymore, Missouri's General Fund increased \$36,978 compared to the previous fiscal year. The key factor associated with this increase was the transfers of assigned and committed funds from prior years to the Capital Projects Fund for expensing capital outlay.

The Parks and Recreation Fund has a total fund balance of \$6,465,284. The net decrease of \$52,791 was primarily due to the reduction from bond proceeds in 2017 from 2016 and the expenditures associated with the 2016 issue.

The Transportation Fund has a total fund balance of \$3,424,898. The net increase of \$818,092 was primarily due to the collection from bond proceeds that will not be spent until the next fiscal year.

CITY OF RAYMORE, MISSOURI
MANAGEMENT'S DISCUSSION AND ANALYSIS

FINANCIAL ANALYSIS OF THE GOVERNMENT'S FUNDS (Continued)

Governmental Funds (Continued)

The Debt Service Fund has a total fund balance of \$2,371,898. The government's debt service levy on property for the fiscal year was 0.7170.

The Capital Improvement Fund has a total fund balance of \$679,003. The net decrease of \$937,123 is primarily due to the increases expenses associated with capital outlay.

The other nonmajor funds have a combined fund balance of \$5,141,370. The net increase of \$727,627 was primarily associated with the transfers from others funds for future capital outlay needs.

Proprietary Fund

The City of Raymore, Missouri's proprietary fund provides the same type of information found in the government-wide financial statements, but in more detail. The City of Raymore, Missouri, utilized five different proprietary departments. With these, the primary operating fund is the Enterprise Fund.

Unrestricted net position in this proprietary fund at the end of the year amounted to \$5,710,519. This is down slightly from the previous year's amount of \$5,885,685. Total net position in this fund decreased by \$948,481. Other factors concerning the finances of this fund have already been addressed in the discussion of the City of Raymore, Missouri's business-type activities.

CAPITAL ASSET AND DEBT ADMINISTRATION

Capital Assets

The City of Raymore, Missouri's investment in capital assets for its governmental and business-type activities as of the end of the fiscal year was \$87,898,019 (net of accumulated depreciation). This investment in capital assets includes land, construction in progress, buildings and system improvements, machinery and equipment, park facilities, roads, highways, and bridges.

The investment total listed below represents an increase of \$260,864 from the previous year. This increase is primarily attributable to capitalized assets that exceeded the amount of depreciation expense during the year.

Additional information on the City's capital assets can be found in the Note 3 on pages 52 to 54 of this report.

CITY OF RAYMORE, MISSOURI
MANAGEMENT'S DISCUSSION AND ANALYSIS

CAPITAL ASSET AND DEBT ADMINISTRATION (Continued)

City of Raymore, Missouri
Capital Assets
(in thousands of dollars)

	Governmental		Business-Type		Total	
	Activities		Activities			
	2017	2016	2017	2016	2017	2016
Land and construction in progress	5,783	6,618	1,589	689	7,372	7,307
Buildings, improvements, and related office equipment	18,475	15,060	354	354	18,829	15,414
Machinery, equipment, and vehicles	3,897	3,820	4,658	4,652	8,555	8,472
Infrastructure	93,867	90,888	76,427	75,866	170,294	166,754
	<u>122,022</u>	<u>116,386</u>	<u>83,028</u>	<u>81,561</u>	<u>205,050</u>	<u>197,947</u>
Less accumulated depreciation	<u>(60,769)</u>	<u>(56,286)</u>	<u>(56,383)</u>	<u>(54,024)</u>	<u>(117,152)</u>	<u>(110,310)</u>
Capital assets, net of depreciation	<u>61,253</u>	<u>60,100</u>	<u>26,645</u>	<u>27,537</u>	<u>87,898</u>	<u>87,637</u>

Long-Term Debt

At the end of the current fiscal year, the City of Raymore, Missouri, had total long-term debt outstanding of \$28,615,910.

Additional information on the City's long-term debt can be found in Note 4 on pages 55 to 62 of this report.

City of Raymore, Missouri
Outstanding Debt
(in thousands of dollars)

	Governmental		Business-Type		Total	
	Activities		Activities			
	2017	2016	2017	2016	2017	2016
General obligation bonds	24,575	23,010	285	415	24,860	23,425
Notes payable	126	146			126	146
Special obligation bonds	3,620	4,040			3,620	4,040
Capital lease	10				10	
Certificates of participation		230				230
Total	<u>28,331</u>	<u>27,426</u>	<u>285</u>	<u>415</u>	<u>28,616</u>	<u>27,841</u>

CITY OF RAYMORE, MISSOURI
MANAGEMENT'S DISCUSSION AND ANALYSIS

ECONOMIC FACTORS, NEXT YEAR'S BUDGET, AND RATES

General Fund revenues for fiscal year 2018 are projected to total \$9,735,476. This represents an overall conservative growth of 2.19% over the prior year budget. Most revenues with the exception of the franchise fees, municipal court fees, and miscellaneous are projected to be higher this next fiscal year. The City continues to see a favorable growth increase in building permits which provides additional resources in many of our revenues.

General Fund budgeted 2018 expenditures are projected to total \$10,676,764 compared to \$9,908,660 in 2017. This represents a 7.75% increase over the prior year. Of the 2018 amount, \$782,220 was interfund transfers directed by the Council utilizing unassigned fund balance.

Major capital projects will be funded from the various capital funds sales taxes as well as the \$662,220 transferred from the General Fund as directed by City Council.

In the business-type activities, the rates are set as follows: water \$6.50; sewer \$8.01 (volume) and \$78.46 (winter average). The rates are set on a cost of service break-even method to be reviewed and adjusted as needed due to the reliance on Kansas City, Missouri; Little Blue Valley Sewer District; and Middle Big Creek to provide water and sewer service respectively. On September 25, 2017, the City Council approved a \$0.54 decrease to the water rate and a \$0.54 increase to the sewer rate effective November 1, 2017.

The City will continue to monitor and respond to the ongoing changes in the economy.

REQUESTS FOR INFORMATION

This financial report is designed to provide a general overview of the City of Raymore, Missouri's finances. Questions concerning any of the information provided in this report or requests for additional financial information should be addressed to the Office of the Finance Director, 100 Municipal Circle, Raymore, Missouri 64083.

CITY OF RAYMORE, MISSOURI
STATEMENT OF NET POSITION
OCTOBER 31, 2017

	Primary Government			Component Units
	Governmental Activities	Business-Type Activities	Total	
ASSETS				
Cash and cash equivalents	4,522,575	1,427,546	5,950,121	
Investments	8,303,463	3,363,970	11,667,433	
Taxes receivable	1,542,604		1,542,604	758,476
Accounts receivable, net	239,527	1,306,550	1,546,077	
Interest receivable	35,659	10,091	45,750	
Prepaid expenses	157,949	86,424	244,373	
Inventory	62,233	78,050	140,283	
Restricted cash	3,013,881	178,762	3,192,643	4,061,585
Restricted investments	4,676,004	555,517	5,231,521	
Capital assets				
Land	3,627,494	337,399	3,964,893	
Construction in progress	2,155,106	1,251,943	3,407,049	
Other capital assets, net of accumulated depreciation	<u>55,469,927</u>	<u>25,056,150</u>	<u>80,526,077</u>	
TOTAL ASSETS	<u>83,806,422</u>	<u>33,652,402</u>	<u>117,458,824</u>	<u>4,820,061</u>
DEFERRED OUTFLOWS OF RESOURCES				
Unamortized discount of refinanced long-term debt				159,309
Resources to be recognized in future pension expense	<u>746,647</u>	<u>742,075</u>	<u>1,488,722</u>	
TOTAL DEFERRED OUTFLOWS OF RESOURCES	<u>746,647</u>	<u>742,075</u>	<u>1,488,722</u>	<u>159,309</u>
TOTAL ASSETS AND DEFERRED OUTFLOW OF RESOURCES	<u>84,553,069</u>	<u>34,394,477</u>	<u>118,947,546</u>	<u>4,979,370</u>
LIABILITIES				
Accounts payable	611,509	328,866	940,375	82,993
Accrued expenses	285,109	29,569	314,678	404,095
Meter deposits		647,615	647,615	
Accrued bond interest	119,539	5,359	124,898	

CITY OF RAYMORE, MISSOURI
STATEMENT OF NET POSITION
OCTOBER 31, 2017

	Primary Government			Component Units
	Governmental Activities	Business-Type Activities	Total	
LIABILITIES (Continued)				
Long-term liabilities				
Net pension liability	2,029,684	585,964	2,615,648	
Due within one year	2,630,726	155,465	2,786,191	987,184
Due in more than one year	<u>27,314,234</u>	<u>147,493</u>	<u>27,461,727</u>	<u>22,142,522</u>
 TOTAL LIABILITIES	 <u>32,990,801</u>	 <u>1,900,331</u>	 <u>34,891,132</u>	 <u>23,616,794</u>
 DEFERRED INFLOW OF RESOURCES				
Resources to be recognized in future pension expense	<u>175,308</u>	<u>354,429</u>	<u>529,737</u>	<u> </u>
 TOTAL DEFERRED INFLOW OF RESOURCES	 <u>175,308</u>	 <u>354,429</u>	 <u>529,737</u>	 <u> </u>
 TOTAL LIABILITIES AND DEFERRED INFLOW OF RESOURCES	 <u>33,166,109</u>	 <u>2,254,760</u>	 <u>35,420,869</u>	 <u>23,616,794</u>
 NET POSITION (DEFICIT)				
Net investment in capital assets	38,765,288	26,357,106	65,122,394	
Restricted for:				
Debt service	702,284	86,664	788,948	
Capital projects	94,021		94,021	
911 distribution	4,232		4,232	
Unrestricted (deficit)	<u>11,821,135</u>	<u>5,695,947</u>	<u>17,517,082</u>	<u>(18,637,424)</u>
 TOTAL NET POSITION (DEFICIT)	 <u>51,386,960</u>	 <u>32,139,717</u>	 <u>83,526,677</u>	 <u>(18,637,424)</u>

See accompanying notes to financial statements.

CITY OF RAYMORE, MISSOURI
STATEMENT OF ACTIVITIES
FOR THE YEAR ENDED OCTOBER 31, 2017

Functions/programs	Expenses	Program Revenues		Net (Expense) Revenue and Changes in Net Position			Component Units
		Charges for Services	Operating Grants and Contributions	Primary Government			
				Governmental Activities	Business-Type Activities	Total	
Primary government							
Governmental activities							
Administration	1,577,403	253,283		(1,324,120)		(1,324,120)	
Information Technology	582,903			(582,903)		(582,903)	
Economic Development	240,685			(240,685)		(240,685)	
Community Development	895,240	666,198		(229,042)		(229,042)	
Engineering	701,875			(701,875)		(701,875)	
Streets and Roads	4,386,259			(4,386,259)		(4,386,259)	
Buildings and Grounds	579,627			(579,627)		(579,627)	
Storm water	507,254			(507,254)		(507,254)	
Municipal Court	183,730			(183,730)		(183,730)	
Finance	818,455			(818,455)		(818,455)	
Communications	248,730			(248,730)		(248,730)	
Prosecuting Attorney	22,165			(22,165)		(22,165)	
Police	4,892,695	359,628	69,997	(4,463,070)		(4,463,070)	
Emergency Preparedness	187,014			(187,014)		(187,014)	
Parks and Recreation	1,896,507	426,162		(1,470,345)		(1,470,345)	
Interest, fiscal fees, and bond issuance costs on long-term debt	1,061,495			(1,061,495)		(1,061,495)	
Total governmental activities	<u>18,782,037</u>	<u>1,705,271</u>	<u>69,997</u>	<u>(17,006,769)</u>		<u>(17,006,769)</u>	
Business-type activities							
Water and Sewer	8,765,035	8,578,799			(186,236)	(186,236)	
Total primary government	<u>27,547,072</u>	<u>10,284,070</u>	<u>69,997</u>	<u>(17,006,769)</u>	<u>(186,236)</u>	<u>(17,193,005)</u>	
Component Units							
Galleria TIF Component Unit	1,206,789						(1,206,789)
Hubach Hill TDD Component Unit	407,695		401,600				(6,095)
Total component units	<u>1,614,484</u>		<u>401,600</u>				<u>(1,212,884)</u>

CITY OF RAYMORE, MISSOURI
STATEMENT OF ACTIVITIES
FOR THE YEAR ENDED OCTOBER 31, 2017

	Program Revenues		Net (Expense) Revenue and Changes in Net Position				
	Expenses	Charges for Services	Operating Grants and Contributions	Primary Government			Component Units
				Governmental Activities	Business-Type Activities	Total	
General revenues							
Taxes							
Property tax				3,779,036		3,779,036	318,275
Sales taxes				6,992,740		6,992,740	1,686,310
Other				882,325		882,325	
Franchise fees				2,131,712		2,131,712	
Investment income				165,029	53,679	218,708	21,294
Other revenues				164,184		164,184	
Total general revenues				<u>14,115,026</u>	<u>53,679</u>	<u>14,168,705</u>	<u>2,025,879</u>
Transfers				815,924	(815,924)		
CHANGE IN NET POSITION				(2,075,819)	(948,481)	(3,024,300)	812,995
NET POSITION (DEFICIT), beginning of year				<u>53,462,779</u>	<u>33,088,198</u>	<u>86,550,977</u>	<u>(19,450,419)</u>
NET POSITION (DEFICIT), end of year				<u>51,386,960</u>	<u>32,139,717</u>	<u>83,526,677</u>	<u>(18,637,424)</u>

See accompanying notes to financial statements.

CITY OF RAYMORE, MISSOURI
BALANCE SHEET
GOVERNMENTAL FUNDS
OCTOBER 31, 2017

	General Fund	Parks and Recreation Fund	Trans- portation Fund	Debt Service Fund	Capital Improvement Fund	Nonmajor Governmental Funds	Total Governmental Funds
ASSETS							
ASSETS							
Cash and cash equivalents	240,033	718,470	710,166	198,699	389,446	2,265,761	4,522,575
Investments	2,902,789	609,137	637,231	1,562,713	9,754	2,581,839	8,303,463
Taxes receivable	785,224	119,734	237,853	4,799	237,853	118,927	1,504,390
Interest receivable	12,535	9,207	2,292	3,403	714	7,508	35,659
Other receivables	38,329					119,149	157,478
Due from other governments	82,049						82,049
Prepaid items	142,023	15,926					157,949
Inventory	62,233						62,233
Restricted cash	106,984	1,319,355	1,541,087	3,372	43,083		3,013,881
Restricted investments		<u>3,732,637</u>	<u>296,269</u>	<u>598,912</u>		<u>48,186</u>	<u>4,676,004</u>
TOTAL ASSETS	<u>4,372,199</u>	<u>6,524,466</u>	<u>3,424,898</u>	<u>2,371,898</u>	<u>680,850</u>	<u>5,141,370</u>	<u>22,515,681</u>
LIABILITIES AND FUND BALANCES							
LIABILITIES							
Accounts payable	579,045	30,617			1,847		611,509
Accrued expenses	<u>256,544</u>	<u>28,565</u>					<u>285,109</u>
Total liabilities	<u>835,589</u>	<u>59,182</u>			<u>1,847</u>		<u>896,618</u>
FUND BALANCES							
Nonspendable	204,256	15,926					220,182
Restricted	106,984	5,051,992	1,837,356	602,284	43,083	48,186	7,689,885
Committed	20,000						20,000
Assigned	324,241	1,397,366	1,587,542	1,769,614	635,920	5,093,184	10,807,867
Unassigned	<u>2,881,129</u>						<u>2,881,129</u>
Total fund balances	<u>3,536,610</u>	<u>6,465,284</u>	<u>3,424,898</u>	<u>2,371,898</u>	<u>679,003</u>	<u>5,141,370</u>	<u>21,619,063</u>
TOTAL LIABILITIES AND FUND BALANCES	<u>4,372,199</u>	<u>6,524,466</u>	<u>3,424,898</u>	<u>2,371,898</u>	<u>680,850</u>	<u>5,141,370</u>	<u>22,515,681</u>

See accompanying notes to financial statements.

CITY OF RAYMORE, MISSOURI
RECONCILIATION OF THE BALANCE SHEET
OF GOVERNMENTAL FUNDS TO THE STATEMENT OF NET POSITION
OCTOBER 31, 2017

Amounts reported for governmental activities in the statement of net position are different because:

Fund balance - total governmental funds		21,619,063
Capital assets used in governmental activities are not financial resources and, therefore, are not reported in the governmental funds.		
Governmental capital assets	122,021,945	
Less accumulated depreciation	<u>(60,769,418)</u>	
		61,252,527
Property taxes receivable not collected within 60 days of the end of the fiscal year are deferred in the funds as they are not available to pay current-period expenditures.		38,214
Bond interest was accrued for governmental activities.		(119,539)
Governmental funds report the effect of issuance costs, premiums, and discounts when the debt is first issued, whereas these amounts are deferred and amortized in the government-wide statements.		
Bond premiums		(1,045,677)
Long-term liabilities are not due and payable in the current period and, therefore, are not reported in the funds.		
Notes payable	(126,000)	
Capital lease	(9,910)	
General obligation bonds	(24,575,000)	
Special obligation bonds	<u>(3,620,000)</u>	
		(28,330,910)

CITY OF RAYMORE, MISSOURI
RECONCILIATION OF THE BALANCE SHEET
OF GOVERNMENTAL FUNDS TO THE STATEMENT OF NET POSITION
OCTOBER 31, 2017

The effects of GASB 68 to record the net pension asset (liability) and related deferred outflows and inflows of resources are not reflected in the fund financial statements:

Net pension asset (liability)	(2,029,684)	
Deferred outflows of resources	746,647	
Deferred inflows of resources	<u>(175,308)</u>	
		(1,458,345)

Compensated absences are not due and payable in the current period and, therefore, are not reported in the funds.

(568,373)

NET POSITION OF GOVERNMENTAL ACTIVITIES

51,386,960

See accompanying notes to financial statements.

CITY OF RAYMORE, MISSOURI
STATEMENT OF REVENUES, EXPENDITURES, AND CHANGES IN
FUND BALANCES - GOVERNMENTAL FUNDS
YEAR ENDED OCTOBER 31, 2017

	General Fund	Parks and Recreation Fund	Transportation Fund	Debt Service Fund	Capital Improvement Fund	Other Nonmajor Funds	Total Governmental Funds
REVENUES							
Taxes							
Property	1,344,510	364,047		2,074,639			3,783,196
Sales	2,885,689	608,101	1,216,153		1,216,154	1,066,643	6,992,740
Franchise	2,131,712						2,131,712
Other	520,158		362,167				882,325
Charges for services	238,376	426,162			2,863		667,401
Fines and forfeitures	359,628			12,044			371,672
Licenses, fees, and permits	666,198						666,198
Intergovernmental	69,997						69,997
Interest	47,471	63,473	15,261	10,153	3,494	25,177	165,029
Refunds and reimbursements	25,288				91,031	401	116,720
Miscellaneous	33,028	13,292			1,144		47,464
Total revenues	8,322,055	1,475,075	1,593,581	2,096,836	1,314,686	1,092,221	15,894,454
EXPENDITURES							
Current							
Administration	1,147,139				27,604		1,174,743
Information Technology	465,464					2,189	467,653
Economic Development	179,967						179,967
Community Development	597,012						597,012
Engineering	361,871						361,871
Streets and Roads	787,195					1,461	788,656
Buildings and Grounds	283,316						283,316
Storm Water	310,303						310,303
Municipal Court	146,560						146,560
Finance	588,014						588,014
Communications	184,563						184,563
Prosecuting Attorney	22,165						22,165
Police	3,661,648					1,111	3,662,759
Emergency Preparedness	122,146						122,146
Parks and Recreation		1,181,921				3,174	1,185,095
Capital outlay		2,186,030	1,591,998		1,532,626	434,841	5,745,495
Debt service							
Principal		46,000		1,185,000	425,000	204,000	1,860,000
Interest, bond issuance costs, and fiscal fees		14,389	8,611	703,111	492,750	9,143	1,228,004
Total expenditures	8,857,363	3,428,340	1,600,609	1,888,111	2,477,980	655,919	18,908,322

CITY OF RAYMORE, MISSOURI
STATEMENT OF REVENUES, EXPENDITURES, AND CHANGES IN
FUND BALANCES - GOVERNMENTAL FUNDS
YEAR ENDED OCTOBER 31, 2017

	General Fund	Parks and Recreation Fund	Trans- portation Fund	Debt Service Fund	Capital Improvement Fund	Other Nonmajor Funds	Total Governmental Funds
EXCESS OF REVENUES OVER (UNDER) EXPENDITURES	<u>(535,308)</u>	<u>(1,953,265)</u>	<u>(7,028)</u>	<u>208,725</u>	<u>(1,163,294)</u>	<u>436,302</u>	<u>(3,013,868)</u>
OTHER FINANCING SOURCES (USES)							
Bond proceeds		1,633,440	1,072,560	44,000			2,750,000
Bond premium		96,651	63,468				160,119
Transfers in	1,494,477	218,000	150,000		326,171	567,156	2,755,804
Transfers out	<u>(922,191)</u>	<u>(47,617)</u>	<u>(460,908)</u>	<u>(133,333)</u>	<u>(100,000)</u>	<u>(275,831)</u>	<u>(1,939,880)</u>
Total other financing sources (uses)	<u>572,286</u>	<u>1,900,474</u>	<u>825,120</u>	<u>(89,333)</u>	<u>226,171</u>	<u>291,325</u>	<u>3,726,043</u>
NET CHANGE IN FUND BALANCES	36,978	(52,791)	818,092	119,392	(937,123)	727,627	712,175
FUND BALANCE, beginning of year	<u>3,499,632</u>	<u>6,518,075</u>	<u>2,606,806</u>	<u>2,252,506</u>	<u>1,616,126</u>	<u>4,413,743</u>	<u>20,906,888</u>
FUND BALANCE, end of year	<u>3,536,610</u>	<u>6,465,284</u>	<u>3,424,898</u>	<u>2,371,898</u>	<u>679,003</u>	<u>5,141,370</u>	<u>21,619,063</u>

See accompanying notes to financial statements.

CITY OF RAYMORE, MISSOURI
RECONCILIATION OF THE STATEMENT OF REVENUES, EXPENDITURES,
AND CHANGES IN FUND BALANCES
OF GOVERNMENTAL FUNDS TO THE STATEMENT OF ACTIVITIES
FOR THE YEAR ENDED OCTOBER 31, 2017

Amounts reported for governmental activities in the statement of activities are different because:

Net change in fund balances - total governmental funds		712,175
--	--	---------

Governmental funds report capital outlays as expenditures. However, in the statement of activities, the cost of those assets is allocated over their estimated useful lives and reported as depreciation expense. This is the amount by which depreciation was less than capital outlay in the current period.

Expenses capitalized	5,745,495	
Trade-in value differences	44,237	
Internal administration fees capitalized	49,873	
Addition of capital lease	9,910	
Depreciation	<u>(4,664,391)</u>	
		1,185,124

Governmental funds report the proceeds from the disposal of assets as revenues. However, in the statement of activities, the revenues are reported less the amount of nondepreciated cost. This is the amount by which the cost exceeded any proceeds.

Cost	(213,725)	
Accumulated depreciation	<u>180,770</u>	
		(32,955)

Certain revenue that does not provide current financial resources is not reported as revenues in the funds as follows:

Property taxes	<u>(4,160)</u>	
		(4,160)

Some expenses in the statement of activities that do not require the use of current financial resources and, therefore, are not reported as expenditures in governmental funds.

Compensated absences	<u>(31,789)</u>	
		(31,789)

CITY OF RAYMORE, MISSOURI
RECONCILIATION OF THE STATEMENT OF REVENUES, EXPENDITURES,
AND CHANGES IN FUND BALANCES
OF GOVERNMENTAL FUNDS TO THE STATEMENT OF ACTIVITIES
FOR THE YEAR ENDED OCTOBER 31, 2017

Governmental funds report payments required for pension costs as expenditures. However, in the statement of activities, these costs are adjusted for the actuarial balances of the net pension asset or liability and the related deferred outflows and inflows of resources. This is the amount by which the reported pension expense by the pension plan exceeded the amounts paid into the plan.

Plan payments made by the City	674,448	
Pension expense reported by the pension plan	<u>(3,680,142)</u>	(3,005,694)

The issuance of long-term debt (e.g., bonds, loan, leases) provides current financial resources to governmental funds, while the repayment of the principal of long-term debt consumes the current financial resources of governmental funds. Also, governmental funds report the effect of premiums, discounts, and similar items when debt is first issued, whereas these amounts are deferred and amortized in the statement of activities. In the statement of activities, interest is accrued on outstanding debt, whereas in the governmental funds, an interest expenditure is reported when due. The following is the detail of the net effect of these differences in the treatment of long-term debt and related items:

Debt principal payments	1,855,000	
Decrease in accrued bond interest expense	64,066	
Bond and premium proceeds	(2,910,119)	
Addition of capital lease	(9,910)	
Amortization of premiums and discounts	<u>102,443</u>	
		<u>(898,520)</u>

CHANGE IN NET POSITION OF GOVERNMENTAL ACTIVITIES	<u><u>(2,075,819)</u></u>
---	---------------------------

See accompanying notes to financial statements.

CITY OF RAYMORE, MISSOURI
STATEMENT OF NET POSITION
PROPRIETARY FUNDS
OCTOBER 31, 2017

	Enterprise Fund
ASSETS	
Current Assets	
Cash and cash equivalents	1,427,546
Investments	3,363,970
Accounts receivable, net	1,306,550
Interest receivable	10,091
Inventory	78,050
Prepaid expenses	86,424
Total current assets	<u>6,272,631</u>
Noncurrent Assets	
Restricted cash	178,762
Restricted investments	555,517
Capital assets	
Land	337,399
Construction in progress	1,251,943
Other capital assets, net of accumulated depreciation	<u>25,056,150</u>
Total noncurrent assets	<u>27,379,771</u>
TOTAL ASSETS	<u>33,652,402</u>
DEFERRED OUTFLOWS OF RESOURCES	
Resources to be recognized in future pension expense due to assets	<u>742,075</u>
TOTAL ASSETS AND DEFERRED OUTFLOW OF RESOURCES	<u>34,394,477</u>
LIABILITIES	
Current Liabilities	
Accounts payable	328,866
Accrued expenses	29,569
Accrued bond interest	5,359
Meter deposits	647,615
Current portion of long-term obligations	155,465
Total current liabilities	<u>1,166,874</u>

CITY OF RAYMORE, MISSOURI
STATEMENT OF NET POSITION
PROPRIETARY FUNDS
OCTOBER 31, 2017

	Enterprise Fund
LIABILITIES (Continued)	
Noncurrent Liabilities	
Net pension liability	585,964
Noncurrent portion of long-term obligations	147,493
Total noncurrent liabilities	<u>733,457</u>
 TOTAL LIABILITIES	 <u>1,900,331</u>
 DEFERRED INFLOW OF RESOURCES	
Resources to be recognized in future pension expense due to liabilities	 <u>354,429</u>
 TOTAL LIABILITIES AND DEFERRED INFLOW OF RESOURCES	 <u>2,254,760</u>
 NET POSITION	
Net investment in capital assets	26,357,106
Restricted for:	
Debt service	86,664
Unrestricted	<u>5,695,947</u>
 TOTAL NET POSITION	 <u>32,139,717</u>

See accompanying notes to financial statements.

CITY OF RAYMORE, MISSOURI
STATEMENT OF REVENUES, EXPENSES, AND CHANGES IN NET POSITION
PROPRIETARY FUNDS
YEAR ENDED OCTOBER 31, 2017

	Enterprise Fund
OPERATING REVENUES	
Charges for service	8,422,885
Penalties	138,969
Miscellaneous	16,945
Total operating revenues	<u>8,578,799</u>
OPERATING EXPENSES	
Personnel services	1,233,046
Contractual services	1,878,522
Commodities	2,249,255
Utilities/maintenance	1,008,149
Depreciation	2,372,314
Total operating expenses	<u>8,741,286</u>
OPERATING LOSS	<u>(162,487)</u>
NONOPERATING REVENUES (EXPENSES)	
Investment income	53,679
Bond interest and fees	(23,749)
Total nonoperating revenues (expenses)	<u>29,930</u>
LOSS BEFORE TRANSFERS	<u>(132,557)</u>
TRANSFERS	
Transfers in	154,438
Transfers out	(970,362)
Net transfers	<u>(815,924)</u>
CHANGE IN NET POSITION	(948,481)
NET POSITION, beginning of year	<u>33,088,198</u>
NET POSITION, end of year	<u><u>32,139,717</u></u>

See accompanying notes to financial statements.

CITY OF RAYMORE, MISSOURI
STATEMENT OF CASH FLOWS
PROPRIETARY FUNDS
YEAR ENDED OCTOBER 31, 2017

CASH FLOWS FROM OPERATING ACTIVITIES	
Receipts from customers	8,722,124
Payments to suppliers	(4,706,173)
Payments to employees	(1,231,428)
Other receipts	<u>16,945</u>
Net cash provided by operating activities	<u>2,801,468</u>
CASH FLOWS FROM NONCAPITAL FINANCING ACTIVITIES	
Transfers from other funds	154,438
Transfers to other funds	<u>(970,362)</u>
Net cash used in noncapital financing activities	<u>(815,924)</u>
CASH FLOWS FROM CAPITAL AND RELATED FINANCING ACTIVITIES	
Purchases of capital assets	(1,485,946)
Long-term debt payments	(130,000)
Interest and fiscal fees paid on long-term debt	<u>(26,167)</u>
Net cash used in capital and related financing activities	<u>(1,642,113)</u>
CASH FLOWS FROM INVESTING ACTIVITIES	
Interest and dividends	46,995
Decrease in investments	<u>76,462</u>
Net cash provided by investing activities	<u>123,457</u>
NET INCREASE IN CASH AND CASH EQUIVALENTS	466,888
CASH AND CASH EQUIVALENTS, beginning of year	<u>1,139,420</u>
CASH AND CASH EQUIVALENTS, end of year	<u><u>1,606,308</u></u>

CITY OF RAYMORE, MISSOURI
STATEMENT OF CASH FLOWS
PROPRIETARY FUNDS
YEAR ENDED OCTOBER 31, 2017

ALLOCATION OF CASH	
Unrestricted	1,427,546
Restricted	<u>178,762</u>
Total	<u><u>1,606,308</u></u>
Reconciliation of Operating Loss to Net Cash Provided by Operating Activities	
Operating loss	<u>(162,487)</u>
Adjustments to reconcile operating loss to net cash provided by operating activities:	
Depreciation	2,372,314
(Increase) decrease in:	
Receivables	80,235
Inventory	(1,211)
Prepaid expenses	(13,273)
Net pension asset	150,576
Deferred outflows of resources	(629,786)
Increase (decrease) in:	
Accounts payable	36,685
Accrued expenses	1,618
Net pension liability	585,964
Deferred inflows of resources	300,798
Meter deposits	80,035
Total adjustments	<u>2,963,955</u>
Net cash provided by operating activities	<u><u>2,801,468</u></u>

See accompanying notes to financial statements.

CITY OF RAYMORE, MISSOURI
STATEMENT OF NET POSITION
FIDUCIARY FUNDS
OCTOBER 31, 2017

	Agency Fund
ASSETS	
Cash and cash equivalents	316,876
Interest receivable	295
Investments at fair value	<u>127,431</u>
 TOTAL ASSETS	 <u>444,602</u>
 LIABILITIES	
Due to escrow agents	<u>444,602</u>
 NET POSITION	 <u><u>- 0 -</u></u>

See accompanying notes to financial statements.

CITY OF RAYMORE, MISSOURI
NOTES TO FINANCIAL STATEMENTS

NOTE 1. SUMMARY OF SIGNIFICANT ACCOUNTING POLICIES

The financial statements of the City of Raymore, Missouri (the City) have been prepared in conformity with accounting principles generally accepted in the United States of America (GAAP) as applied to government units. The Governmental Accounting Standards Board is the accepted standard-setting body for establishing governmental accounting and financial reporting principles. The more significant of the City's accounting policies are described below.

A. REPORTING ENTITY

The City of Raymore, Missouri (the City) was incorporated in 1877 and covers an area of approximately twenty square miles in Cass County, Missouri. The City is a constitutionally approved charter city operating under the mayor/city manager/council form of government. The City Manager is the chief administrative officer of the City. The City provides services to its estimated 20,839 residents in many areas, including law enforcement, water and sewer services, community enrichment and development, and various social services. Fire protection services are provided by a fire district which is a separate governmental entity. Primary and secondary education services are provided by the Raymore-Peculiar School District, also a separate governmental entity.

In determining the financial reporting entity, the City complies with the provisions of Governmental Accounting Standards Board Statement No. 14, *The Financial Reporting Entity*, and includes all component units of which the City appointed a voting majority of the units' board and the City is either able to impose its will on the unit or a financial benefit or burden relationship exists.

The accompanying financial statements present the City's primary government and component units over which the City is financially accountable. Financial accountability is based primarily on operational or financial relationships with the City (as distinct from legal relationships). Component units are reported in the City's financial statements as follows:

Blended Component Units

Raymore Municipal Assistance Corporation

The Raymore Municipal Assistance Corporation (RAYMAC) was created to lessen the burden of the government of the City of Raymore, Missouri, by financing, acquiring, leasing, or subleasing property to the City. The City of Raymore, Missouri, is the sole member of RAYMAC and members of the Board of Directors are appointed by the Raymore City Council.

The financial activity of RAYMAC consists of leasehold revenue bonds issued, and a lease agreement with the City of Raymore, Missouri, to fund repayment of the bonds. Although it is legally separate from the City, RAYMAC is reported as if it were part of the primary government (blended) because its sole purpose is to serve the primary government exclusively.

CITY OF RAYMORE, MISSOURI
NOTES TO FINANCIAL STATEMENTS

NOTE 1. SUMMARY OF SIGNIFICANT ACCOUNTING POLICIES (Continued)

A. REPORTING ENTITY (Continued)

Discretely Presented Component Unit

Galleria TIF District

This reporting unit has separate corporate powers and accounts for the material transactions related to proceeds of the TIF notes issued to pay for the Galleria TIF District along with the tax proceeds and uses generated by the District. This District creates the potential for financial benefit and/or burden for the City. The Raymore City Council appoints all six members of the TIF Commission's Board of Directors. Separate financial statements are produced for the District and may be obtained from the City's Finance Administration office.

Hubach Hill and North Cass Parkway Transportation Development District

This reporting unit has separate corporate powers and accounts for the material transactions related to debt service of revenue bonds issued in 2009. The District currently has no revenue generated to service such debt, and the City transfers needed funds to the District as determined necessary. The District creates the potential for financial benefit and/or burden for the City. The Raymore City Council appoints a voting majority of the District's Board of Directors. The District has issued separate audited financial statements from which the information included in this report was taken from. Separate financial statements are produced for the District and may be obtained from the City's Finance Administration office.

Agency Fund

The City is voluntarily acting in a fiduciary capacity to account for the transactions of the Escrow Accounts. The Community Improvement Districts are to account for the collections and disbursements of incremental ad valorem taxes and corresponding bond payments related to projects under redevelopment contracts. The City is not financially responsible for the debt of the Districts and it is reported in the financial statements as an Agency Fund. The Escrow Accounts are to account for certain revenues received by the City that are not considered an asset of the City. Since the collections of money are not to be spent for City use, the Escrow Accounts are reported in the financial statements as an Agency Fund.

CITY OF RAYMORE, MISSOURI
NOTES TO FINANCIAL STATEMENTS

NOTE 1. SUMMARY OF SIGNIFICANT ACCOUNTING POLICIES (Continued)

B. BASIS OF PRESENTATION

Government-Wide Statements

The statement of net position and statement of activities report information on the City as a whole. They include all funds of the City except for fiduciary funds. The effects of interfund activity have been removed from these statements. Governmental activities, which normally are supported by taxes and intergovernmental receipts, are reported separately from business-type activities, which rely to a significant extent on fees and charges for support.

The statement of activities demonstrates the degree to which the direct disbursements of a given function or segment are offset by program receipts. Direct disbursements are those that are clearly identifiable with a specific function or segment. Program receipts include (1) charges to customers or applicants who purchase, use, or directly benefit from goods, services, or privileges provided by a given function or segment and (2) grants and contributions that are restricted to meeting the operational or capital requirements of a particular function or segment. Taxes and other items not properly included among program revenues are reported instead as general receipts. The City does not allocate indirect costs.

Fund Financial Statements

The accounts of the City are organized on the basis of funds, each of which is considered to be a separate accounting entity. The operations of each fund are accounted for by a separate set of self-balancing accounts that comprise its assets, liabilities, fund equity, revenues or receipts, and expenditures or expenses, as appropriate. Government resources are allocated to, and accounted for in, individual funds based on the purpose for which they are to be spent and the means by which spending activities are controlled.

The emphasis in fund financial statements is on the major funds in either the governmental or business-type activities categories. GASB Statement No. 34 sets forth minimum criteria for the determination of major funds, which should have a specific community focus.

The funds of the City are described below:

Governmental Fund Types

Governmental funds are those through which most governmental functions of the City are financed. The acquisition, use, and balances of the City's expendable financial resources and the related liabilities (other than those in proprietary funds)

CITY OF RAYMORE, MISSOURI
NOTES TO FINANCIAL STATEMENTS

NOTE 1. SUMMARY OF SIGNIFICANT ACCOUNTING POLICIES (Continued)

B. BASIS OF PRESENTATION (Continued)

Fund Financial Statements (Continued)

Governmental Fund Types (Continued)

are accounted for through governmental funds. The measurement focus is upon determination of changes in financial position. The following are the City's governmental fund types:

General Fund - The General Fund is the principal operating fund of the City and accounts for all financial transactions not accounted for in other funds. The general operating expenditures, fixed charges, and capital improvement costs that are not paid through other funds are financed through revenues received by the General Fund.

Special Revenue Funds - The Special Revenue Funds are used to account for revenues derived from specific taxes, governmental grants, or other revenue sources which are restricted to finance particular functions or activities of the City.

Major Special Revenue Funds

Parks and Recreation Fund - Accounts for the collection of program fees, access charges, concessions, a portion of general property taxes and special purpose sale tax revenues received and payments of expenditures for recreational services provided by the Parks and Recreation Board.

Transportation Fund - Established to account for intergovernmental road tax for construction and maintenance of City roads.

Nonmajor Special Revenue Funds

Development Projects Fund - Established to account for cash payments related to development districts which are expected to be repaid to the City by such districts.

Storm Water Sales Tax Fund - Established by vote of constituents to account for sales taxes received and expenditures for storm water control.

The Debt Service Fund accounts for the accumulation of resources used for the payment of principal, interest, and fiscal charges on long-term general obligation debt.

CITY OF RAYMORE, MISSOURI
NOTES TO FINANCIAL STATEMENTS

NOTE 1. SUMMARY OF SIGNIFICANT ACCOUNTING POLICIES (Continued)

B. BASIS OF PRESENTATION (Continued)

Fund Financial Statements (Continued)

Governmental Fund Types (Continued)

The Capital Projects Funds are used to account for financial resources segregated for the acquisition or construction of major capital facilities other than those financed by Enterprise Funds.

Major Capital Projects Fund

Capital Improvement Fund - Established to be used to construct or purchase capital assets.

Nonmajor Capital Projects Funds

Public Works Facility Fund - Established to construct and furnish new public works building.

Capital Projects Fund - Established to use excise tax to construct or purchase capital assets.

V.E.R.P. Fund - Established to purchase vehicles and equipment with transfers from other funds.

B.E.R.P. Fund - Established to purchase buildings and building improvements with transfers from other funds.

Proprietary Fund Type

Proprietary funds are used to account for the City's ongoing organizations and activities which are similar to those often found in the private sector. The measurement focus is based upon determination of net income.

The Water and Sanitary Sewer Fund accounts for operations that are financed and operated in a manner similar to private business enterprises where the intent of the governing body is that the costs (expenses including depreciation) of providing water and sewer services on a continuing basis be financed or recovered primarily through user charges on which the periodic determination of net income or loss is deemed appropriate.

CITY OF RAYMORE, MISSOURI
NOTES TO FINANCIAL STATEMENTS

NOTE 1. SUMMARY OF SIGNIFICANT ACCOUNTING POLICIES (Continued)

B. BASIS OF PRESENTATION (Continued)

Fund Financial Statements (Continued)

Fiduciary Fund Types

Fiduciary funds are used to account for assets for which the City acts in a trustee capacity or as an agent for individuals, other governmental units, and/or other funds.

The agency funds are custodial in nature and do not present results of operations or have a measurement focus. Agency funds are accounted for using the accrual basis of accounting. These funds are used to account for assets that the City holds for others in an agency capacity.

C. MEASUREMENT FOCUS, BASIS OF ACCOUNTING, AND BASIS OF PRESENTATION

The government-wide financial statements are reported using the economic resources management focus and the accrual basis of accounting, as are the proprietary fund financial statements. Revenues are recorded when earned and expenses are recorded when a liability is incurred, regardless of the timing of the related cash flows. Grants and similar items are recognized as revenue as soon as all eligibility requirements imposed by the provider have been met.

Governmental fund financial statements are reported using the current financial resources measurement focus and the modified accrual basis of accounting. Revenues are recognized as soon as they are both measurable and available. Revenues are considered to be available when they are collectible with the current period or soon enough thereafter to pay liabilities of the current period. For this purpose, the City considers revenues to be available if they are collected within 60 days of the end of the current period. Expenditures generally are recorded when a liability is incurred, as under accrual accounting. However, debt service expenditures, as well as expenditures related to compensated absences and claims and judgments, are recorded only when payment is due.

Property tax, sales taxes, franchise taxes, licenses, and interest associated with the current period are all considered to be susceptible to accrual and so have been recognized as revenues of the current period. All other revenue items are considered to be measurable and available only when cash is received by the City.

Proprietary funds distinguish operating revenues and expenses from nonoperating items. Operating revenues and expenses generally result from providing services and producing and delivering goods in connection with the fund's principal ongoing operations.

CITY OF RAYMORE, MISSOURI
NOTES TO FINANCIAL STATEMENTS

NOTE 1. SUMMARY OF SIGNIFICANT ACCOUNTING POLICIES (Continued)

C. MEASUREMENT FOCUS, BASIS OF ACCOUNTING, AND BASIS OF PRESENTATION (Continued)

When both restricted and unrestricted resources are available for use, it is the City's policy to use restricted resources first, and then unrestricted resources as they are needed.

As a general rule, the effect of interfund activity has been eliminated from the government-wide financial statements. Exceptions to this general rule are payments in lieu of taxes and other charges between the government's water and sewer function and various other functions of the government. Elimination of these charges would distort the direct costs and program revenues reported for the various functions concerned.

D. BUDGETS

Budgets for the City are prepared and adopted on the modified accrual basis of accounting for all governmental funds. The City Manager and Finance Director may make transfers of appropriations within a department. Transfers of appropriations between departments require the approval of the governing council. The City Council approved amendments to the budget during the year. The actual results of operations are presented in comparison to the budgets on the combined statement of revenues, expenditures, and changes in fund balances - budget and actual - all governmental fund types. All governmental funds with the exception of the Development Projects and the Public Works Funds have legally adopted annual budgets. Appropriations lapse at year-end but may be reappropriated in the following year.

E. CASH AND INVESTMENTS

The City's cash and cash equivalents are considered to be cash on hand, demand deposits, and short-term investments with original maturities of three months or less. Certain cash and investment accounts are restricted for construction projects, debt service, and compliance with bond covenants.

The City's investment policies are structured to conform to Missouri Statute 30.270. The City is authorized to invest in Federal Agency discount notes, Federal Agency debt, Treasury Bills, Treasury notes and bonds, and certificates of deposit at Commercial Banks and S & L Associations, and Repurchase Agreements. Investments are reported at fair value.

F. ACCOUNTS RECEIVABLE

Accounts receivable is stated net of allowances. Receivables in the fund statements include receivables to be collected within 60 days after year-end.

CITY OF RAYMORE, MISSOURI
NOTES TO FINANCIAL STATEMENTS

NOTE 1. SUMMARY OF SIGNIFICANT ACCOUNTING POLICIES (Continued)

G. PREPAIDS AND INVENTORIES

Prepaid balances are for payments made by the City in the current year to provide services occurring in the subsequent fiscal year, and the reserve for prepaid items has been recognized to signify that a portion of fund balance is not available for other subsequent expenditures. Prepaid expenses are accounted for using the consumption method.

Inventories, consisting of materials and supplies, are valued at lower of cost or market with use of the purchases method. Cost is determined using the first-in, first-out (FIFO) basis.

H. CAPITAL ASSETS

Capital assets are expensed when purchased for fund statement presentation in governmental funds. Capital assets purchased in the Proprietary Fund for fund statement presentation and in all government-wide financial statements are reported as an asset and depreciated.

As the City did not include capital asset accounting prior to October 31, 2003, a list of capital assets purchased prior to October 31, 2002, was prepared using various sources. Capital assets were valued at historical cost or estimated historical cost if actual was unavailable. Capital assets since October 31, 2003, are recorded at cost except for donated capital assets, which are recorded at their estimated acquisition value at the date of donation. In addition, certain capitalized projects that were conducted by the City's departments include administration and inspection fees, up to 6% of the construction costs.

Accumulated depreciation as of October 31, 2002, was established on capital assets purchased prior to October 31, 2002. Depreciation of all exhaustible capital assets is recorded as an expense in the statement of activities with accumulated depreciation reflected in the statement of net position. Depreciation is provided over the assets' estimated useful lives using the straight-line method of depreciation. A capitalization threshold of \$5,000 is used to report capital assets. The range of estimated useful lives by type of asset is as follows:

Building and building improvements	25 - 50 years
Land improvements	10 - 20 years
Office equipment and furniture	7 - 10 years
Computer equipment, hardware, and software	3 - 5 years
Machinery and equipment	7 - 15 years
Vehicles	5 - 10 years
Infrastructure	30 - 40 years

CITY OF RAYMORE, MISSOURI
NOTES TO FINANCIAL STATEMENTS

NOTE 1. SUMMARY OF SIGNIFICANT ACCOUNTING POLICIES (Continued)

I. LONG-TERM DEBT

In the government-wide and proprietary fund financial statements, outstanding debt is reported as liabilities. Bond discounts or premiums are capitalized and amortized over the terms of the respective bonds using a method that approximates the effective interest method.

The governmental fund financial statements recognize the proceeds of debt as other financing sources of the current period. Issuance costs are reported as expenditures.

J. COMPENSATED ABSENCES

Under terms of the City's personnel policy, City employees are granted vacation and sick leave in varying amounts based upon length of service. In the event of termination, an employee is paid for accumulated vacation up to a maximum accumulation of 320 hours and is paid for one out of every four days of sick leave unused prior to date of termination.

K. EQUITY CLASSIFICATION

Government-Wide Statements

Net position is displayed in three components:

Net investment in capital assets consists of capital assets including restricted capital assets, net of accumulated depreciation and reduced by the outstanding balances of any bonds, mortgages, notes, or other borrowings that are attributable to the acquisition, construction, or improvement of those assets.

Restricted net position consists of net assets with constraints placed on the use either by external groups, such as creditors, grantors, contributors, or laws and regulations of other governments, or through constitutional provision or enabling legislation.

Unrestricted net position consists of net assets that do not meet the definition of restricted.

Fund Financial Statements

Governmental fund equity is classified as fund balance.

CITY OF RAYMORE, MISSOURI
NOTES TO FINANCIAL STATEMENTS

NOTE 1. SUMMARY OF SIGNIFICANT ACCOUNTING POLICIES (Continued)

K. EQUITY CLASSIFICATION (Continued)

Fund Financial Statements (Continued)

Fund Balance Classification

The governmental fund financial statements present fund balances based on classifications that comprise a hierarchy that is based primarily on the extent to which the City is bound to honor constraints on the specific purposes for which amounts in the respective governmental funds can be spent. The classifications used in the governmental fund financial statements are as follows:

Nonspendable

This classification includes amounts that cannot be spent because they either (a) are not in spendable form or (b) are legally or contractually required to be maintained intact.

Restricted

This classification includes amounts for which constraints have been placed on the use of the resources either (a) externally imposed by creditors (such as through a debt covenant), grantors, contributors, or laws and regulations of other governments or (b) imposed by law through constitutional provisions or enabling legislation.

Committed

This classification includes amounts that can be used only for specific purposes pursuant to constraints imposed by formal action of the City Council by means of an ordinance. These amounts cannot be used for any other purpose unless the Board removes or changes the specified use by taking the same type of action that was employed when the funds were initially committed. This classification also includes contractual obligations to the extent that existing resources have been specifically committed for use in satisfying those contractual requirements.

Assigned

This classification includes amounts that are constrained by the City's intent to be used for a specific purpose but are neither restricted nor committed. This intent can be expressed by the City Council or through the Council delegating this responsibility to the City Administrator through the budgetary process.

Unassigned

This classification includes the residual fund balance for the General Fund.

CITY OF RAYMORE, MISSOURI
NOTES TO FINANCIAL STATEMENTS

NOTE 1. SUMMARY OF SIGNIFICANT ACCOUNTING POLICIES (Continued)

K. EQUITY CLASSIFICATION (Continued)

The City would typically use restricted fund balances first, followed by committed resources, and then assigned resources, as appropriate opportunities arise, but reserves the right to selectively spend unassigned resources first to defer the use of these other classified funds.

L. DEFERRED OUTFLOWS AND INFLOWS OF RESOURCES

The City reports decreases and increases in net assets that relate to future periods as deferred outflows and inflows of resources in a separate section of its government-wide and proprietary funds statements of net position. The City has several calculations related to its pension plan that qualify for reporting in these categories in addition to the amounts included in the current year's financial statements that are the result of prior year refunded debt for the original issues' discounts and premiums which are being amortized over the remaining life of the original debt as a part of interest expense.

M. USE OF ESTIMATES

The preparation of basic financial statements in conformity with accounting principles generally accepted in the United States of America requires management to make estimates and assumptions that affect the reported amounts of assets and liabilities and disclosure of contingent assets and liabilities at the date of the basic financial statements and the reported amounts of revenues and expenses during the reporting period. Actual results could differ from those estimates.

N. INTERFUND TRANSACTIONS

During the course of normal operations, the City has transactions between funds, including expenditures and transfers of resources, to provide services and construct assets. Legally authorized transfers are included in the fund financial statements of both governmental and proprietary funds.

NOTE 2. CASH AND INVESTMENTS

The City maintains a cash and investment pool which is available for use by most funds. Each fund type's portion of this pool is displayed on the combined balance sheet as pooled cash and investments. Interest earned is allocated to the funds on the basis of month-end cash and investment balances in those funds. Cash and investments are separately held by some of the City's funds.

The funds of the City must be deposited and invested under the terms of a contract, contents of which are set out in the Depository Contract Law. The depository bank places approved pledged securities for safekeeping and trust with the City's agent bank in an

CITY OF RAYMORE, MISSOURI
NOTES TO FINANCIAL STATEMENTS

NOTE 2. CASH AND INVESTMENTS (Continued)

amount sufficient to protect City funds on a day-to-day basis during the period of the contract. The pledge of approved securities is waived only to the extent of the depository bank's dollar amount of Federal Deposit Insurance Corporation (FDIC) insurance. Custodial credit risk for deposits is the risk that in the event of a failure of a depository financial institution, the City's deposits may not be returned or the City will not be able to recover collateral securities in the possession of any outside party. The City's policy requires deposits to be 100 percent secured by collateral valued at market less the amount covered by the FDIC. As of October 31, 2017, none of the City's bank balances with financial institutions were exposed to custodial credit risk.

Investments

Authorized Investments - The City is authorized to invest in Federal Agency discount notes, Federal Agency debt, Treasury Bills, Treasury notes and bonds, and certificates of deposit at Commercial Banks and S & L Associations, and Repurchase Agreements.

Interest Rate Risk - Interest rate risk is the risk that changes in market interest rates will adversely affect the fair value of an investment. Generally, the longer the maturity of an investment, the greater the sensitivity of its fair value to changes in market interest rates. As a means of limiting its exposure to fair value losses arising from rising interest rates, the City's investment policy requires operating funds to be invested to coincide with projected cash flow needs.

As of October 31, 2017, the City had the following investments.

Investment Type	Maturity Date	Yield %	Rating	Fair Value
MOSIP Pool	N/A	1.010	AAAm	4,048,408
FHLB	12/8/2017	1.125	AA+	2,500,000
Certificate of deposit	8/24/2018	1.250		2,000,000
Certificate of deposit	6/29/2018	0.300		671,993
Certificate of deposit	9/28/2018	1.350		2,000,000
Certificate of deposit	11/21/2017	0.790		2,000,000
Certificate of deposit	5/1/2018	1.040		1,000,000
Certificate of deposit	7/28/2018	1.250		2,006,301
Investments held in trust	Various	Various		<u>799,683</u>
Total investments				17,026,385
Less: Investments allocated to Fiduciary Funds				<u>(127,431)</u>
Total investments allocated to City Funds				<u><u>16,898,954</u></u>

CITY OF RAYMORE, MISSOURI
NOTES TO FINANCIAL STATEMENTS

NOTE 2. CASH AND INVESTMENTS (Continued)

Investments (Continued)

Investment	Unrestricted	Restricted	Total
Governmental activities	8,303,463	4,676,004	12,979,467
Business-type activities	<u>3,363,970</u>	<u>555,517</u>	<u>3,919,487</u>
	<u><u>11,667,433</u></u>	<u><u>5,231,521</u></u>	<u><u>16,898,954</u></u>

Credit Risk

Generally, credit risk is the risk that an issuer of an investment will not fulfill its obligation to the holder of the investment. This is measured by the assignment of a rating by a nationally recognized statistical rating organization. All investments are securities of government-sponsored agencies.

Concentration of Credit Risk - The City's investment policy is to apply the prudent-person rule: Investments will be made with judgment and care, under the circumstances then prevailing, which persons of prudence, discretion, and intelligence exercise in the management of their own affairs, not for speculation but for investment, considering probable safety of their capital as well as the probable income to be derived.

Bond escrow accounts are held and invested by escrow trust agencies which are required to invest as stated in accordance with state law.

NOTE 3. CAPITAL ASSETS

Capital asset activity for the year ended October 31, 2017, was as follows:

	Balance November 1, 2016	Additions	Deletions	Balance October 31, 2017
<u>Governmental Activities</u>				
Capital assets, not being depreciated				
Land	3,627,494			3,627,494
Construction in progress	<u>2,990,226</u>	<u>5,733,973</u>	<u>(6,569,093)</u>	<u>2,155,106</u>
Total capital assets not being depreciated	<u>6,617,720</u>	<u>5,733,973</u>	<u>(6,569,093)</u>	<u>5,782,600</u>

CITY OF RAYMORE, MISSOURI
NOTES TO FINANCIAL STATEMENTS

NOTE 3. CAPITAL ASSETS (Continued)

	Balance November 1, 2016	Additions	Deletions	Balance October 31, 2017
<u>Governmental Activities (Continued)</u>				
Capital assets, being depreciated				
Intangible property	169,917			169,917
Buildings and improvements	15,060,479	3,414,975		18,475,454
Office equipment and furniture	167,823			167,823
Computer equipment and software	338,452	117,306		455,758
Machinery and equipment	1,240,743	43,320	(48,350)	1,235,713
Vehicles	1,903,298	129,853	(165,375)	1,867,776
Infrastructure	90,887,723	2,979,181		93,866,904
Total capital assets being depreciated	<u>109,768,435</u>	<u>6,684,635</u>	<u>(213,725)</u>	<u>116,239,345</u>
Less accumulated depreciation for:				
Intangible property	67,120	12,219		79,339
Buildings and improvements	5,188,918	568,235		5,757,153
Office equipment and furniture	88,312	21,753		110,065
Computer equipment and software	209,388	22,313		231,701
Machinery and equipment	844,178	81,901	(40,197)	885,882
Vehicles	1,137,670	215,688	(140,573)	1,212,785
Infrastructure	48,750,211	3,742,282		52,492,493
Total accumulated depreciation	<u>56,285,797</u>	<u>4,664,391</u>	<u>(180,770)</u>	<u>60,769,418</u>
Total capital assets, being depreciated	<u>53,482,638</u>	<u>2,020,244</u>	<u>(32,955)</u>	<u>55,469,927</u>
Governmental activities capital assets, net	<u>60,100,358</u>	<u>7,754,217</u>	<u>(6,602,048)</u>	<u>61,252,527</u>
<u>Business-Type Activities</u>				
Capital assets, not being depreciated				
Land	337,399			337,399
Construction in progress	351,827	1,450,728	(550,612)	1,251,943
Total capital assets not being depreciated	<u>689,226</u>	<u>1,450,728</u>	<u>(550,612)</u>	<u>1,589,342</u>

CITY OF RAYMORE, MISSOURI
NOTES TO FINANCIAL STATEMENTS

NOTE 3. CAPITAL ASSETS (Continued)

	Balance November 1, 2016	Additions	Deletions	Balance October 31, 2017
<u>Business-Type Activities</u> (Continued)				
Capital assets, being depreciated				
Buildings and improvements	353,741			353,741
Vehicles and equipment	751,757	24,605	(18,830)	757,532
Intangible property	3,899,998			3,899,998
Infrastructure	75,865,674	560,996		76,426,670
Total capital assets being depreciated	<u>80,871,170</u>	<u>585,601</u>	<u>(18,830)</u>	<u>81,437,941</u>
Less accumulated depreciation for:				
Intangible property	978,267	152,563		1,130,830
Buildings and improvements	117,439	8,754		126,193
Vehicles and equipment	382,074	71,510	(14,122)	439,462
Infrastructure	52,545,819	2,139,487		54,685,306
Total accumulated depreciation	<u>54,023,599</u>	<u>2,372,314</u>	<u>(14,122)</u>	<u>56,381,791</u>
Total capital assets, being depreciated	<u>26,847,571</u>	<u>(1,786,713)</u>	<u>(4,708)</u>	<u>25,056,150</u>
Business-type activities capital assets, net	<u>27,536,797</u>	<u>(335,985)</u>	<u>(555,320)</u>	<u>26,645,492</u>

The following table summarizes the depreciation by function for the year ended October 31, 2017:

	Governmental Activities	Business-Type Activities
Administration	112,287	
Information Technology	28,314	
Community Development	13,960	
Engineering	162,667	
Streets and Roads	3,522,000	
Buildings and Grounds	228,066	
Storm Water	69,310	
Police Department	138,892	
Emergency Management	6,501	
Parks	382,394	
Water and Sewer		2,732,314
	<u>4,664,391</u>	<u>2,732,314</u>

CITY OF RAYMORE, MISSOURI
NOTES TO FINANCIAL STATEMENTS

NOTE 4. LONG-TERM DEBT

Governmental Activities

Changes in the debt for the year ended October 31, 2017, consisted of the following:

	Balance November 1, 2016	Addi- tions	Retire- ments	Balance October 31, 2017	Due in One Year
General Obligation Bonds	23,010,000	2,750,000	(1,185,000)	24,575,000	1,470,000
Special Obligation					
Refunding Bonds	4,040,000		(420,000)	3,620,000	460,000
Notes payable	146,000		(20,000)	126,000	20,000
Certificates of					
Participation	230,000		(230,000)		
Capital lease		19,820	(9,910)	9,910	9,910
Compensated absences	536,584	568,373	(536,584)	568,373	568,373
Bond premium	988,001	160,119	(102,443)	1,045,677	102,443
Total governmental long-term liabilities	<u>28,950,585</u>	<u>3,498,312</u>	<u>(2,503,937)</u>	<u>29,944,960</u>	<u>2,630,726</u>

General Obligation Bonds

<p>\$9,335,000 General Obligation Bonds, Series 2012, dated December 28, 2012; due in annual installments varying from year to year until maturity in March 2027; interest at 2.0% to 2.5%.</p>	8,000,000
<p>\$7,150,000 General Obligation Bonds, Series 2013, dated February 28, 2013; due in annual installments varying from year to year until maturity in March 2024; interest at 0.5% to 2.15%.</p>	6,425,000
<p>\$7,300,000 General Obligation Bonds, Series 2016, dated June 2, 2016; due in annual installments varying from year to year until maturity in March 2032; interest at 2.25% to 4.25%</p>	7,050,000
<p>\$2,750,000 General Obligation Bonds, Series 2017, dated April 27, 2017; due in annual installments varying from year to year until maturity in March 2037; interest at 3.0% to 4.0%.</p>	2,750,000

CITY OF RAYMORE, MISSOURI
NOTES TO FINANCIAL STATEMENTS

NOTE 4. LONG-TERM DEBT (Continued)

Governmental Activities (Continued)

General Obligation Bonds (Continued)

\$2,515,000 General Obligation Bonds, Series 2008 (Refunding 1999), dated March 25, 2008; due in annual installments varying from year to year until maturity in March 2019; interest at 3.3% to 4.0%.	<u>350,000</u>
Total general obligation bonds	<u><u>24,575,000</u></u>

Aggregate annual principal and interest payments applicable to the general obligation bonds are:

Years Ending October 31,	Principal	Interest
2018	1,470,000	636,696
2019	2,145,000	579,491
2020	1,575,000	524,185
2021	1,635,000	482,722
2022	1,700,000	429,779
2023 - 2027	9,960,000	1,491,068
2028 - 2032	5,260,000	453,626
2033 - 2037	830,000	71,075
	<u>24,575,000</u>	<u>4,668,642</u>

Certificates of Participation

\$1,640,000 Certificates of Participation; due in annual installments varying from year to year until maturity on April 1, 2017; interest from 1.85% to 3.70%. These were paid off during the year ended October 31, 2017.	<u>- 0 -</u>
--	--------------

Special Obligation Refunding Bonds

\$4,040,000 Special Obligation Refunding and Improvement Bonds, Series 2016, dated June 1, 2016; due in annual installments Varying from year to year until maturity in March 2026; interest at 2.5%.	<u>3,620,000</u>
---	------------------

CITY OF RAYMORE, MISSOURI
NOTES TO FINANCIAL STATEMENTS

NOTE 4. LONG-TERM DEBT (Continued)

Governmental Activities (Continued)

Aggregate annual principal and interest payments applicable to the special obligation refunding bonds are:

Years Ending October 31,	Principal	Interest
2018	460,000	84,750
2019	470,000	73,125
2020	485,000	61,188
2021	500,000	48,876
2022	505,000	36,313
2023 - 2026	<u>1,200,000</u>	<u>48,876</u>
	<u><u>3,620,000</u></u>	<u><u>353,128</u></u>

Note Payable

Note payable, Department of Natural Resources, dated December 1, 2002, with final payment due January 1, 2023; interest at 1.6%. Note secured by tax revenues.

126,000

Aggregate annual principal and interest payments applicable to notes payable are:

Year Ending October 31,	Principal	Interest
2018	20,000	1,856
2019	20,000	1,536
2020	21,000	1,208
2021	21,000	872
2022	21,000	536
2023	<u>23,000</u>	<u>184</u>
	<u><u>126,000</u></u>	<u><u>6,192</u></u>

Capital Lease

Capital lease, Winterland, Inc., dated November 1, 2016, with final payment due in 2019. The cumulative amount of assets acquired under the capital lease amounted to \$19,820.

9,910

CITY OF RAYMORE, MISSOURI
NOTES TO FINANCIAL STATEMENTS

NOTE 4. LONG-TERM DEBT (Continued)

Governmental Activities (Continued)

Compensated Absences

Compensated absences are payable upon separation from employment which could occur at any time and are, therefore, considered payable within one year and are liquidated by the governmental fund responsible for generating the liability. The liability is allocated to each fund as follows:

General	517,854
Parks	<u>50,519</u>
	<u><u>568,373</u></u>

Business-Type Activities

Changes in the debt for the year ended October 31, 2017, consisted of the following:

	Balance November 1, 2016	Addi- tions	Retire- ments	Balance October 31, 2017	Due in One Year
General Obligation					
Bonds	415,000		(130,000)	285,000	140,000
Compensated absences	18,432	14,572	(18,432)	14,572	14,572
Bond premium	<u>4,463</u>	<u> </u>	<u>(893)</u>	<u>3,570</u>	<u>893</u>
 Total business-type activities long- term liabilities	 <u>437,895</u>	 <u>14,572</u>	 <u>(149,325)</u>	 <u>303,142</u>	 <u>155,465</u>

General Obligation Bonds

\$1,800,000 December 1, 1999, General Obligation Bonds (State Revolving Fund Program) Series 1999-B; due in annual installments varying from year to year until maturity on July 1, 2019; interest at 4.125% to 5.75%.

285,000

CITY OF RAYMORE, MISSOURI
NOTES TO FINANCIAL STATEMENTS

NOTE 4. LONG-TERM DEBT (Continued)

Business-Type Activities (Continued)

Aggregate annual principal and interest payments applicable to the general obligation bonds are:

Year Ending October 31,	Principal	Interest
2018	140,000	16,212
2019	<u>145,000</u>	<u>8,338</u>
	<u>285,000</u>	<u>24,550</u>

Compensated Absences

Compensated absences are payable upon separation from employment which could occur at any time and are, therefore, considered payable within one year and are liquidated by the governmental fund responsible for generating the liability. The liability is allocated to each fund as follows:

Water and Sanitary Sewer	<u>14,572</u>
--------------------------	---------------

Discretely Presented Component Units

Galleria TIF District

Changes in the debt for the year ended October 31, 2017, consisted of the following:

	Balance November 1, 2015	Addi- tions	Retire- ments	Balance October 31, 2016	Due in One Year
Tax Increment Refunding and Improvement Revenue Bonds, Series 2014A	14,500,000		(860,000)	13,640,000	910,000
Subordinate Tax Revenue Bonds, Series 2014B	3,185,546		(54,866)	3,130,680	
Bond discounts	(33,790)		2,816	(30,974)	(2,816)
Total Galleria TIF District	<u>17,651,756</u>		<u>(912,050)</u>	<u>16,739,706</u>	<u>907,184</u>

CITY OF RAYMORE, MISSOURI
NOTES TO FINANCIAL STATEMENTS

NOTE 4. LONG-TERM DEBT (Continued)

Discretely Presented Component Units (Continued)

Galleria TIF District (Continued)

Revenue Bonds

On March 19, 2014, the District issued Tax Increment Refunding and Improvement Revenue Bonds, Series 2014A, in the amount of \$15,920,000 with interest rates ranging from 3.000% to 5.375%. Principal payments are due annually beginning on May 1, 2015, with semiannual interest payments each May 1 and November 1 beginning on November 1, 2014, until maturity on May 1, 2028. The bonds are to be repaid by payments in lieu of taxes (PILOT), economic activity tax revenues (EATS), and imposed sales taxes generated by the District. The purpose of these bonds was to refund through in-substance defeasance the 2005 series bonds and for project development costs associated with the Raymore Galleria Project. The bonds contain significant requirements for deposits of the issuance proceeds. This includes the deposit of \$9,077,694 to be held in trust by an escrow agent, which will pay the remaining principal and interest on the 2005 issuance when the bonds become due and callable. The District is in compliance with all significant requirements of the bond covenants.

13,640,000

On March 19, 2014, the District issued Subordinate Tax Increment Revenue Bonds, Series 2014B, in the amount of \$3,185,546 with an interest rate of 5.27%. The bonds are to be repaid by payments in lieu of taxes (PILOT) and economic activity tax revenues (EATS) in the hierarchy of required payments as disclosed in Section 402 of the Trust Indenture. This includes that reserves are maintained sufficient for the next succeeding interest and principal payments for the next two payment dates of the Series 2014A bonds. For any interest that is not paid semiannually, such interest will be compounded into the calculation of future interest on each future semiannual interest payment date.

CITY OF RAYMORE, MISSOURI
NOTES TO FINANCIAL STATEMENTS

NOTE 4. LONG-TERM DEBT (Continued)

Discretely Presented Component Units (Continued)

Galleria TIF District (Continued)

These bonds mature on July 22, 2035, and were issued for the purpose of project development costs associated with the Raymore Galleria Project. The District is in compliance with all significant requirements of the bond covenants.

3,130,680

16,770,680

Aggregate annual principal and interest payments applicable to the revenue bonds are:

Years Ending October 31,	Principal	Interest
2018	910,000	843,241
2019	965,000	806,841
2020	1,025,000	768,241
2021	1,030,000	727,241
2022	1,105,000	675,741
2023 - 2027	6,605,000	2,455,600
2028 - 2032	2,000,000	934,608
2033 - 2035	<u>3,130,680</u>	<u>494,961</u>
	<u>16,770,680</u>	<u>7,706,474</u>

Hubach Hill and North Cass Parkway Transportation Development District

Changes in the debt for the year ended October 31, 2017, consisted of the following:

	Balance November 1, 2016	Addi- tions	Retire- ments	Balance October 31, 2017	Due in One Year
2009 Infrastructure Improvement Revenue Bonds	<u>6,395,000</u>	<u> </u>	<u>(5,000)</u>	<u>6,390,000</u>	<u>80,000</u>

Revenue Bonds

\$7,695,000 January 15, 2009, Infrastructure Improvement Revenue Bonds, due in annual installments varying from year to year until maturity on September 1, 2032; interest at 4.0% to 6.5%.

6,390,000

CITY OF RAYMORE, MISSOURI
NOTES TO FINANCIAL STATEMENTS

NOTE 4. LONG-TERM DEBT (Continued)

Discretely Presented Component Units (Continued)

Hubach Hill and North Cass Parkway Transportation Development District (Continued)

Aggregate annual principal and interest payments applicable to the revenue bonds are:

Years Ending October 31,	Principal	Interest
2018	80,000	396,325
2019	195,000	391,925
2020	225,000	381,200
2021	260,000	368,825
2022	290,000	353,225
2023 - 2027	1,950,000	1,466,194
2028 - 2032	<u>3,390,000</u>	<u>738,613</u>
	<u>6,390,000</u>	<u>4,096,307</u>

NOTE 5. PROPERTY TAXES

The City's property tax is levied each November on the assessed value as of the prior January 1 for all property located in the City. Assessed valuations are established by the Cass County Assessor. The County collects the property tax and remits it to the City monthly.

The assessed value for property located in the City as of January 1, 2016, on which the fiscal year 2017 levy was based is as follows:

Real estate	247,157,220
Personal property	<u>43,745,234</u>
	<u>290,902,454</u>

The City is permitted by Missouri State Statutes to levy taxes up to \$1.00 per \$100 of assessed valuation for general governmental services other than payment of principal and interest on long-term debt, up to \$0.20 for recreation, and in unlimited amounts for the payment of principal and interest on long-term debt. The City's property tax levies for the year ended October 31, 2017, per \$100 assessed valuation, were as follows:

General Operating	0.4480
Parks and Recreation	0.1206
Debt Service	<u>0.7170</u>
	<u>1.2856</u>

CITY OF RAYMORE, MISSOURI
NOTES TO FINANCIAL STATEMENTS

NOTE 5. PROPERTY TAXES (Continued)

Property taxes may attach as an enforceable lien on property as of January 1. Taxes are levied no later than November 1 and are due and payable at that time. All unpaid taxes levied by November 1 become delinquent January 1 of the following year.

NOTE 6. INTERFUND TRANSACTIONS

	Transfers In						Total
	General Fund	Parks and Recreation Fund	Transportation Fund	Capital Improvement Fund	Nonmajor Funds	Enterprise Fund	
<u>Transfers Out</u>							
General Fund		218,000	150,000	326,171	228,020		922,191
Parks and Recreation Fund					47,617		47,617
Transportation Fund	369,873				91,035		460,908
Debt Service Fund						133,333	133,333
Capital Improvement Fund					100,000		100,000
Nonmajor funds	253,064				1,662	21,105	275,831
Enterprise Fund	871,540				98,822		970,362
Total	<u>1,494,477</u>	<u>218,000</u>	<u>150,000</u>	<u>326,171</u>	<u>567,156</u>	<u>154,438</u>	<u>2,910,242</u>

Transfers are used to move revenues from the fund that statute or budget requires to collect them to the fund that statute or budget requires to expend them and to use unrestricted revenues collected in the General Fund to finance various programs accounted for in other funds in accordance with budgetary authorizations. In addition, the Capital Improvement Fund transferred \$401,600 to the Hubach Hill and North Cass Parkway Transportation Development District (a discretely presented component unit of the City) to assist in the payment of scheduled debt service as recorded in the fund statements and the statement of activities.

NOTE 7. PENSION PLAN

Plan Description

The City of Raymore, Missouri, contributes to the Missouri Local Government Employees Retirement System (LAGERS). LAGERS is an agent multi-employer, statewide public employee retirement plan for units of local government which is legally separate and fiscally independent of the state of Missouri. LAGERS was established in 1967 and is administered in accordance with RSMo. 70.600-70.755. LAGERS serves 695 local participating employers. These participating employers include 302 cities, 60 counties, and 333 other public entities during the plan year ended June 30, 2017.

CITY OF RAYMORE, MISSOURI
NOTES TO FINANCIAL STATEMENTS

NOTE 7. PENSION PLAN (Continued)

Responsibility for the operation and administration of the plan is vested in the LAGERS Board of Trustees consisting of seven persons. Three trustees are elected by the employees who participate in the system, three trustees are elected by the members of the governing bodies of those political subdivisions which participate in the system and one trustee is appointed by the governor. The regular term of office for members of the LAGERS Board of Trustees is four years. Members of the LAGERS Board of Trustees serve without compensation with respect to their duties, but are reimbursed by LAGERS for their actual and necessary expenses incurred in the performance of their duties.

For the City's year ending October 31, 2017, the net pension asset/liability is based on an actuarial valuation performed as of February 28, 2017, and a measurement date of June 30, 2017.

Benefits Provided

LAGERS provides retirement, death, and disability benefits to employees of participating political subdivisions. All benefits vests after 5 years of service. Employees who retire on or after age 60 (55 for police) with 5 or more years of service are entitled to an allowance for life based upon the benefit program then in effect for their political subdivision. Employees may retire with an early retirement benefit with a minimum of 5 years of credited service and after attaining age 55 (50 for police) and receive a reduced allowance. The LAGERS Board of Trustees establishes the benefit plans and provisions that are available for adoption. The political subdivision's governing body adopts all benefits of the plan. Benefit terms provide for annual post retirement adjustments to each member's retirement allowance subsequent to the member's retirement date. The annual adjustment is based on the increase in the Consumer Price Index and is limited to 4% per year.

Contributions

Each participating unit of government is obligated by state law to make all required contributions to the plan. The required contributions are actuarially determined using the individual entry-age actuarial cost method. There are no long-term contracts for contributions to the plan. All actuarial liabilities are amortized over a period of 30 years or less. Administrative costs of LAGERS are financed through investment earnings of the system. Employee contributions are determined at the election of the governing body of the local government. Should the governing body elect to participate in the contributory plan, all employees must contribute four percent of gross salary. The governing body may elect to participate in the non-contributory plan which would result in no employee contributions.

CITY OF RAYMORE, MISSOURI
NOTES TO FINANCIAL STATEMENTS

NOTE 7. PENSION PLAN (Continued)

Actuarial Assumptions

The pension liability for the June 30, 2017, measurement date was determined using the following actuarial assumptions applied to the measurement:

Actuarial Cost Method	Entry Age Normal and Modified Terminal Funding
Amortization Method	A level percentage of payroll amortization method is used to amortize the UAAL over a closed period of years. If the UAAL (excluding the UAAL associated with benefit changes) is negative, then this amount is amortized over the greater of (i) the remaining initial amortization period or (ii) 15 years.
Remaining Amortization Period	Multiple bases from 13 to 19 years
Asset Valuation Method	5-Year smoothed market; 20% corridor
Inflation	3.25% wage inflation; 2.50% price inflation
Salary Increases	3.25% to 6.55% including wage inflation
Investment Rate of Return	7.25%, net of investment expenses
Retirement Age	Experience-based table of rates that are specific to the type of eligibility condition.
Mortality	<p>The healthy retiree mortality tables, for post-retirement mortality, were the RP-2014 Healthy Annuitant mortality table for males and females. The disabled retiree mortality tables, for post-retirement mortality, were the RP-2014 disabled mortality table for males and females. The pre-retirement mortality tables used were the RP-2014 employees mortality table for males and females.</p> <p>Both the post-retirement and pre-retirement tables were adjusted for mortality improvement back to the observation period base year of 2006. The base year for males was then established to be 2017. Mortality rates for a particular calendar year are determined by applying the MP-2015 mortality improvement scale to the above described tables.</p>
Other information	None.

CITY OF RAYMORE, MISSOURI
NOTES TO FINANCIAL STATEMENTS

NOTE 7. PENSION PLAN (Continued)

Discount Rate

Projected benefit payments are required to be discounted to their actuarial present values using a single discount rate that reflects (1) a long-term expected rate of return on pension plan investments and (2) tax-exempt municipal bond rate based on an index of 20-year general obligation bonds with an average AA credit rating as of the measurement date (to the extent that the plan's projected fiduciary net position is not sufficient to pay benefits). The expected rate of return on pension investments is 7.25%; the municipal bond rate is 3.56% (based on the weekly rate closest to but not later than the measurement date of the "20-Year Municipal GO AA Index" rate from Fidelity; and the resulting single discount rate is 7.25% for the General and Police Divisions.

This rate considers the ability of the plan to meet benefit obligations in the future. To make this determination, employer contributions, employee contributions, benefit payments, expenses, and investment returns are projected into the future. The Plan Net Position (assets) in future years can then be determined and compared to its obligation to make benefit payments in those years. As long as assets are projected to be on hand in a future year, the assumed valuation discount rate is used. In years where assets are not projected to be sufficient to meet benefit payments, the use of a "risk-free" rate is required, as described in the preceding paragraph.

LAGERS has provided tables to the City that provide background for the development of the single discount rate. These tables are described as follows:

The Projection of Contributions table shows the development of expected contributions in future years. Normal Cost contributions for future hires are not included (nor are their liabilities).

The Projection of Plan Fiduciary Net Position table shows the development of expected asset levels in future years.

The Present Values of Projected Benefit Payments table shows the development of the Single Discount Rate (SDR). It breaks down the benefit payments into present values for funded and unfunded portions and shows the equivalent total at the SDR.

Assumed Asset Allocation

Activities undertaken by LAGERS Investment Team include setting and implementing investment strategies, appointing and dismissing investment managers, monitoring investment allocation, liquidity, and performance; and ensuring safekeeping of assets.

CITY OF RAYMORE, MISSOURI
NOTES TO FINANCIAL STATEMENTS

NOTE 7. PENSION PLAN (Continued)

Assumed Asset Allocation (Continued)

To achieve the goal of a 7.25% long-term rate of return, LAGERS Investment Team sets an investment strategy which is devised after analyzing the long-term view of the market and consulting with LAGERS' Board of Trustees. The assumed asset allocation is as follows:

Equities	45.80%
Fixed Income	23.38%
Real Assets/Return	20.98%
Strategic	9.84%

Deferred Outflows and Inflows of Resources

The balances of deferred outflows and inflows of resources to be recognized in future pension expense consists of the following:

Deferred Outflows of Resources

Net difference between projected and actual earnings on pension plan investments	417,530
Changes in assumptions	450,958
Differences between expected and actual experience	366,510
Employer contributions subsequent to the measurement	253,724
	<u>1,488,722</u>

Deferred Inflows of Resources

Changes in assumptions	180,979
Differences between expected and actual experience	348,758
	<u>529,737</u>

CITY OF RAYMORE, MISSOURI
NOTES TO FINANCIAL STATEMENTS

NOTE 7. PENSION PLAN (Continued)

Changes in Net Pension Liability

Total Pension Liability	
Service cost	456,851
Interest on total pension liability	1,170,539
Changes of benefit terms	3,346,513
Difference between expected and actual experience of the total pension liability	216,104
Changes of assumptions	(228,943)
Benefit payments, including refunds of employee contributions	<u>(391,101)</u>
Net change in total pension liability	4,569,963
Total pension liability, beginning	<u>16,310,776</u>
Total pension liability, ending	<u>20,880,739</u>
Plan Fiduciary Net Position	
Contributions - employer	654,991
Net investment income	1,953,483
Benefit payments, including refunds of employee contributions	(391,101)
Pension plan administrative expense	(15,174)
Other	<u>(8,857)</u>
Net change in plan fiduciary net position	2,193,342
Plan fiduciary net position, beginning	<u>16,071,749</u>
Plan fiduciary net position, ending	<u>18,265,091</u>
Net Pension Liability	<u>2,615,648</u>

Pension Liability Sensitivity

The following table presents the net pension asset (liability) for the City's proportionate share of the net pension asset (liability) as of June 30, 2016, calculated using the discount rate of 7.25% for the General and Police Divisions, as well as what the pension plan's net pension liability would be if it were calculated using a discount rate that is 1 percentage point lower or 1 percentage point higher than the current rate:

	1.00% Decrease (6.25%)	Current Rate (7.25%)	1.00% Increase (8.25%)
General Division	3,959,161	1,632,303	(263,650)
Police Division	<u>2,235,153</u>	<u>983,345</u>	<u>(25,532)</u>
	<u>6,194,314</u>	<u>2,615,648</u>	<u>(289,182)</u>

CITY OF RAYMORE, MISSOURI
NOTES TO FINANCIAL STATEMENTS

NOTE 7. PENSION PLAN (Continued)

Pension Plan Fiduciary Net Position

Additional financial and actuarial information supporting the preparation of the schedule of changes in fiduciary net position is included in the System's Comprehensive Annual Financial Report for the year ended June 30, 2017. The Comprehensive Annual Financial Report can be obtained at www.molagers.org or from Missouri Local Area Government Employee Retirement System (LAGERS), PO Box 1665, Jefferson City, MO 65102.

NOTE 8. DEFERRED COMPENSATION PLAN

The City offers its employees a deferred compensation plan created in accordance with Internal Revenue Code Section 457. The plan, available to all City employees, permits them to defer a portion of their salary until future years. Participation in the plan is optional. The deferred compensation is not available to employees until termination, retirement, death, or unforeseeable emergency.

All amounts of compensation deferred under the plan, all property and rights purchased with those amounts, and all income attributable to those amounts, property, or rights are solely the property and rights of the participants. Investments are managed by the plan's trustee under several investment options. The choice of the investment options is made by the participants.

NOTE 9. RISK MANAGEMENT

The City is a member of the Mid-America Regional Council Insurance Trust (MARCIT), a not-for-profit corporation consisting of local governments and political subdivisions. MARCIT was formed as a public entity risk retention pool operating as a common risk management and insurance program to cover health and dental, workers' compensation, and property and casualty claims for its members. MARCIT has been established as assessable pools, and accounting records are maintained for each line of coverage on a policy-year basis. The City pays annual premiums to MARCIT for all coverage types.

The agreement with MARCIT provides that MARCIT will be self-sustaining through member premiums. MARCIT has the authority to assess members for any deficiencies of revenues under expenses for any single plan year. Likewise, MARCIT has the authority to declare refunds to members for the excess of revenues over expenses relating to any single plan year. MARCIT has not had deficiencies in any of the past three fiscal years. The City has not incurred any claims which have exceeded its coverage in any of the past three fiscal years.

CITY OF RAYMORE, MISSOURI
NOTES TO FINANCIAL STATEMENTS

NOTE 10. NET POSITION AND FUND BALANCES

Governmental activities and business-type activities net position categories for net investment in capital assets and restricted net position are calculated as follows:

	Governmental Activities	Business- Type Activities
Net investment in capital assets		
Long-term liabilities due within one year	2,630,726	155,465
Long-term liabilities due in more than one year	27,314,234	147,493
Less compensated absences	(568,373)	(14,572)
Less unspent bond proceeds		
Park and Recreation Fund	(5,051,992)	
Transportation Fund	(1,837,356)	
	<u>22,487,239</u>	<u>288,386</u>
Capital assets	<u>61,252,527</u>	<u>26,645,492</u>
Net investment in capital assets	<u><u>38,765,288</u></u>	<u><u>26,357,106</u></u>
 Restricted for:		
Capital projects	6,983,369	
Less unspent bond proceeds included in long-term liabilities	<u>(6,889,348)</u>	
Capital projects	94,021	
Debt service	702,284	86,664
911 distribution	<u>4,232</u>	
Restricted net position	<u><u>800,537</u></u>	<u><u>86,664</u></u>

Governmental fund balances that are restricted, committed, and assigned are further described with their specific purpose as follows:

	Restricted	Committed	Assigned
General Fund			
Debt service	100,000		
Contingencies			54,062
Pavement			183,000
Operations	6,984	20,000	87,179
Park and Recreation Fund			
Capital projects	5,051,992		
Operations			1,397,366

CITY OF RAYMORE, MISSOURI
NOTES TO FINANCIAL STATEMENTS

NOTE 10. NET POSITION AND FUND BALANCES (Continued)

	Restricted	Committed	Assigned
Transportation Fund			
Capital projects	1,837,356		
Operations			1,587,542
Debt Service Fund			
Debt service	602,284		
Transfers to other funds or for debt service			1,769,614
Capital Improvement Fund			
Capital projects	43,083		635,920
Nonmajor funds			
Capital projects	<u>48,186</u>	<u> </u>	<u>5,093,184</u>
Total	<u>7,689,885</u>	<u>20,000</u>	<u>10,807,867</u>

NOTE 11. COMPLIANCE WITH MISSOURI STATUTES

Missouri House Bill No. 103 amending RSMo Section 302.341.2 became effective on August 28, 2013. The amendments to the statute now require municipalities to report an accounting of the percent of "annual general operating revenue" from fines and costs for traffic violations.

Fines and costs for traffic violations	222,009
Annual general operating revenue	8,306,571
Fines and costs for traffic violations as a percentage of annual general operating revenue	2.7091%

NOTE 12. LITIGATION

As of February 16, 2018, the City had unsettled litigation and claims. The unsettled claims are at various stages, and at this time, the City believes any adverse results would not have a material impact to the financial statements. The City is vigorously defending each unsettled claim.

NOTE 13. COMMITMENTS

As of October 31, 2017, the City had outstanding commitments totaling \$3,117,738 for various contracts and/or purchase orders.

CITY OF RAYMORE, MISSOURI
NOTES TO FINANCIAL STATEMENTS

NOTE 14. TAX ABATEMENTS

The City is authorized pursuant to sections 99.800 through 99.865 of the Revised Statutes of Missouri, as amended, and the Real Property Tax Increment Allocation Redevelopment Act (the "TIF Act") to provide for the redevelopment of certain areas through the mechanism of tax increment allocation financing.

The City has established the Tax Increment Financing Commission of the City of Raymore, Missouri (the "TIF Commission") and, following duly advertised public hearings held by the TIF Commission pursuant to the TIF Act, and upon recommendation of the TIF Commission, the Council of the City can adopt ordinances for redevelopment plans in the TIF area.

Highway 58 West Extended Redevelopment Plan

On January 24, 2005, the City of Raymore, Missouri, adopted an ordinance approving a redevelopment plan entitled "Redevelopment Plan for 58 Highway West Extended Redevelopment (TIF) Area". The plan provides for the construction of redevelopment projects for approximately \$71,800,000 and anticipated TIF Reimbursable Project Costs of \$13,761,822.

The Plan relies on the abatement of additional revenue from taxes that are imposed by the City or other Taxing Districts, which are generated by the economic activities within the Redevelopment Area, while tax increment financing remains in effect, excluding licenses, fees, or special assessments, other than payments in lieu of taxes, until the designation is terminated (Economic Activity Taxes).

In addition, the Plan relies on revenues from real property in the Redevelopment Area, which revenues are to be used to retire TIF obligations and pay other reimbursable project costs, which Taxing Districts would have received had the City not adopted tax increment allocation financing, and which would result from levies made after the time of the adoption of the tax increment allocation financing during the time the current equalized value of real property in the Redevelopment Area exceeds the Total Initial Equalized Value of real property in such area until the designation is terminated (Payment in Lieu of Taxes).

Aggregate annual principal and interest payments applicable to the TIF Bonds are disclosed in Note 4.

For the ended December 31, 2016, the City abated taxes as follows:

Tax Abatement Program	Amount Abated
Economic activity taxes	1,686,310
Payment in lieu of taxes	358,749

CITY OF RAYMORE, MISSOURI
NOTES TO FINANCIAL STATEMENTS

NOTE 15. SUBSEQUENT EVENTS

In preparing the financial statements, the City has evaluated events and transactions for potential recognition or disclosure through February 16, 2018, the date the financial statements were available to be issued.

CITY OF RAYMORE, MISSOURI
REQUIRED SUPPLEMENTARY INFORMATION

(This page has been left blank intentionally)

CITY OF RAYMORE, MISSOURI
REQUIRED SUPPLEMENTARY INFORMATION
BUDGETARY COMPARISON SCHEDULE
GENERAL FUND
YEAR ENDED OCTOBER 31, 2017

	General Fund			Variance Positive (Negative)
	Original Budget	Final Budget	Actual	
REVENUES				
Taxes				
Property taxes	1,336,706	1,336,706	1,344,510	7,804
Sales taxes	2,791,982	2,791,982	2,885,689	93,707
Franchise fees	2,278,636	2,278,636	2,131,712	(146,924)
Other taxes	507,677	507,677	520,158	12,481
Charges for services	220,271	220,271	238,376	18,105
Fines and forfeitures	440,800	440,800	359,628	(81,172)
Licenses, fees, and permits	345,123	345,123	666,198	321,075
Intergovernmental	73,481	73,481	69,997	(3,484)
Interest	58,545	58,545	47,471	(11,074)
Refunds and reimbursements	16,000	16,000	25,288	9,288
Miscellaneous	35,414	35,414	33,028	(2,386)
Total revenues	<u>8,104,635</u>	<u>8,104,635</u>	<u>8,322,055</u>	<u>217,420</u>
EXPENDITURES				
General Government				
Administrative	1,457,449	1,257,559	1,144,011	113,548
Information Technology	477,777	477,777	465,464	12,313
Economic Development	211,857	211,857	179,967	31,890
Community Development	647,427	647,427	597,012	50,415
Engineering	397,331	397,331	357,504	39,827
Streets and Roads	766,871	791,871	787,195	4,676
Building and Grounds	303,716	303,716	283,316	20,400
Storm Water	298,684	318,684	310,303	8,381
Municipal Court	177,363	157,813	146,560	11,253
Finance	590,385	590,385	588,014	2,371
Communications		199,890	184,563	15,327
Prosecutor		23,400	22,165	1,235
Police	3,881,618	3,881,618	3,661,648	219,970
Emergency Preparedness	129,868	129,868	122,146	7,722
Capital outlay	18,245	18,245	7,495	10,750
Total expenditures	<u>9,358,591</u>	<u>9,407,441</u>	<u>8,857,363</u>	<u>550,078</u>

CITY OF RAYMORE, MISSOURI
 REQUIRED SUPPLEMENTARY INFORMATION
 BUDGETARY COMPARISON SCHEDULE
 GENERAL FUND
 YEAR ENDED OCTOBER 31, 2017

	General Fund			Variance Positive (Negative)
	Original Budget	Final Budget	Actual	
EXCESS OF REVENUES OVER (UNDER) EXPENDITURES	<u>(1,253,956)</u>	<u>(1,302,806)</u>	<u>(535,308)</u>	<u>767,498</u>
OTHER FINANCING SOURCES (USES)				
Transfers in	1,542,704	1,542,704	1,494,477	(48,227)
Transfers out	<u>(897,520)</u>	<u>(922,191)</u>	<u>(922,191)</u>	<u> </u>
Total other financing sources (uses)	<u>645,184</u>	<u>620,513</u>	<u>572,286</u>	<u>(48,227)</u>
NET CHANGE IN FUND BALANCE	<u><u>(608,772)</u></u>	<u><u>(682,293)</u></u>	36,978	<u><u>719,271</u></u>
FUND BALANCE, beginning of year			<u>3,499,632</u>	
FUND BALANCE, end of year			<u><u>3,536,610</u></u>	

CITY OF RAYMORE, MISSOURI
 REQUIRED SUPPLEMENTARY INFORMATION
 BUDGETARY COMPARISON SCHEDULE
 MAJOR SPECIAL REVENUE FUNDS
 YEAR ENDED OCTOBER 31, 2017

	Parks and Recreation Fund				Transportation Fund				Total Major Special Revenue Funds			
	Original Budget	Final Budget	Actual	Variance Positive (Negative)	Original Budget	Final Budget	Actual	Variance Positive (Negative)	Original Budget	Final Budget	Actual	Variance Positive (Negative)
REVENUES												
Taxes												
Property	359,377	359,377	364,047	4,670					359,377	359,377	364,047	4,670
Road					350,874	350,874	362,167	11,293	350,874	350,874	362,167	11,293
Sale	635,967	635,967	608,101	(27,866)	1,271,935	1,271,935	1,216,153	(55,782)	1,907,902	1,907,902	1,824,254	(83,648)
Charges for services	430,785	430,785	426,162	(4,623)					430,785	430,785	426,162	(4,623)
Interest	8,900	8,900	63,473	54,573	5,756	5,756	15,261	9,505	14,656	14,656	78,734	64,078
Miscellaneous	15,700	15,700	13,292	(2,408)					15,700	15,700	13,292	(2,408)
Total revenues	<u>1,450,729</u>	<u>1,450,729</u>	<u>1,475,075</u>	<u>24,346</u>	<u>1,628,565</u>	<u>1,628,565</u>	<u>1,593,581</u>	<u>(34,984)</u>	<u>3,079,294</u>	<u>3,079,294</u>	<u>3,068,656</u>	<u>(10,638)</u>
EXPENDITURES												
Parks and recreation	1,218,287	1,225,262	1,181,921	43,341					1,218,287	1,225,262	1,181,921	43,341
Capital outlay	4,765,100	4,765,100	2,186,030	2,579,070	3,260,000	3,318,659	1,591,998	1,726,661	8,025,100	8,083,759	3,778,028	4,305,731
Debt service												
Principal	46,000	46,000	46,000						46,000	46,000	46,000	
Interest and fiscal fees	1,301	1,301	1,275	26					1,301	1,301	1,275	26
Total expenditures	<u>6,030,688</u>	<u>6,037,663</u>	<u>3,415,226</u>	<u>2,622,437</u>	<u>3,260,000</u>	<u>3,318,659</u>	<u>1,591,998</u>	<u>1,726,661</u>	<u>9,290,688</u>	<u>9,356,322</u>	<u>5,007,224</u>	<u>4,349,098</u>
EXCESS OF REVENUES OVER (UNDER) EXPENDITURES	<u>(4,579,959)</u>	<u>(4,586,934)</u>	<u>(1,940,151)</u>	<u>2,646,783</u>	<u>(1,631,435)</u>	<u>(1,690,094)</u>	<u>1,583</u>	<u>1,691,677</u>	<u>(6,211,394)</u>	<u>(6,277,028)</u>	<u>(1,938,568)</u>	<u>4,338,460</u>
OTHER FINANCING SOURCES (USES)												
Bond proceeds	1,660,000	1,660,000	1,633,440	(26,560)	1,090,000	1,090,000	1,072,560	(17,440)			2,706,000	2,706,000
Bond premium			96,651	96,651			63,468	63,468			160,119	160,119
Bond issuance costs			(13,114)	(13,114)			(8,611)	(8,611)			(21,725)	(21,725)
Transfers in	218,000	218,000	218,000		150,000	150,000	150,000		368,000	368,000	368,000	
Transfers out	(47,617)	(47,617)	(47,617)		(411,035)	(411,035)	(460,908)	(49,873)	(458,652)	(458,652)	(508,525)	(49,873)
Total other financing sources (uses)	<u>1,830,383</u>	<u>1,830,383</u>	<u>1,887,360</u>	<u>56,977</u>	<u>(261,035)</u>	<u>(261,035)</u>	<u>816,509</u>	<u>1,077,544</u>	<u>(90,652)</u>	<u>(90,652)</u>	<u>2,703,869</u>	<u>(49,873)</u>
NET CHANGE IN FUND BALANCE	<u>(2,749,576)</u>	<u>(2,756,551)</u>	<u>(52,791)</u>	<u>2,703,760</u>	<u>(1,892,470)</u>	<u>(1,951,129)</u>	<u>818,092</u>	<u>2,769,221</u>	<u>(6,302,046)</u>	<u>(6,367,680)</u>	<u>765,301</u>	<u>7,132,981</u>
FUND BALANCE, beginning of year			<u>6,518,075</u>				<u>2,606,806</u>				<u>9,124,881</u>	
FUND BALANCE, end of year			<u>6,465,284</u>				<u>3,424,898</u>				<u>9,890,182</u>	

CITY OF RAYMORE, MISSOURI
NOTES TO REQUIRED SUPPLEMENTARY INFORMATION

The reported budgetary data represents the final approved budget after amendments, as adopted by the City Council. The City follows these procedures in establishing the budgetary data reflected in the basic financial statements.

Prior to October 1, the budget officer submits to the City Council a proposed operating budget for the fiscal year commencing the following November 1. The operating budget includes proposed expenditures and the means of financing them.

A public hearing is conducted to obtain taxpayer comments. Prior to this hearing, the budget document is made available for public inspection.

Prior to November 1, the budget is legally enacted through passage of an ordinance.

Any transfer of budgeted amounts between object levels within any fund or any revisions that alter the total expenditures of any fund must be approved by the City Council. Overspending of budgeted object levels within a department must be approved by the Finance Director and/or City Manager.

Budgets are prepared on the modified accrual basis of accounting which corresponds to the fund statements.

Actual expenditures may not legally exceed the budgeted fund unless approved by Council action or for projects approved in a prior year budget.

CITY OF RAYMORE, MISSOURI
SCHEDULE OF EMPLOYER'S CONTRIBUTIONS
FOR THE YEAR ENDED OCTOBER 31, 2017

Fiscal Year Ending June 30,	Actuarially Determined Contribution (a)	Contribution in Relation (b)	Contribution Deficiency (Excess) (a-b)	Covered Employee Payroll (d)	Contributions as a Percentage of Covered Employee Payroll (b/d)
2008	475,868	475,868		4,632,440	10.27%
2009	467,970	467,969	1	4,625,776	10.12%
2010	432,866	432,866		4,475,897	9.67%
2011	534,793	493,927	40,866	4,620,866	10.69%
2012	562,800	556,651	6,149	4,761,103	11.69%
2013	611,889	611,889		5,086,077	12.03%
2014	609,900	609,900		5,182,657	11.77%
2015	592,423	592,422	1	5,119,378	11.57%
2016	535,989	535,989		5,174,337	10.36%
2017	747,115	747,115		5,457,220	13.69%

CITY OF RAYMORE, MISSOURI
SCHEDULE OF CHANGES IN NET PENSION LIABILITY
YEAR ENDED OCTOBER 31, 2017

	October 31, 2015	October 31, 2016	October 31, 2017
Net pension liability (asset) - beginning	(1,221,183)	(1,396,562)	239,027
Service cost	455,266	439,249	456,851
Interest on total pension liability	1,001,605	1,044,055	1,170,539
Changes in benefit terms			3,346,513
Difference between expected and actual experience of the total pension liability	(487,927)	154,136	216,104
Changes in assumptions		731,104	(228,943)
Contributions - employer	(597,323)	(570,131)	(654,991)
Net investment (income) loss	(291,693)	36,725	(1,953,483)
Pension plan administrative expense	15,193	14,641	15,174
Other	<u>(270,500)</u>	<u>(214,190)</u>	<u>8,857</u>
Net pension liability (asset) - ending	<u>(1,396,562)</u>	<u>239,027</u>	<u>2,615,648</u>

* Schedule is to be provided prospectively beginning with the fiscal year ending October 31, 2015.

CITY OF RAYMORE, MISSOURI
OTHER SUPPLEMENTARY INFORMATION

(This page has been left blank intentionally)

CITY OF RAYMORE, MISSOURI
NONMAJOR GOVERNMENTAL FUNDS
COMBINED BALANCE SHEET
OCTOBER 31, 2017

		Special Revenue Funds		Capital Improvement Funds			Total Nonmajor Governmental Funds	
		Development Projects Fund	Storm Water Sales Tax Fund	Public Works Fund	Capital Projects Fund	V.E.R.P. Fund		B.E.R.P Fund
ASSETS								
ASSETS								
	Cash and cash equivalents		108,762		922,528	513,900	720,571	2,265,761
	Investments		104,105		784,921	676,259	1,016,554	2,581,839
	Taxes receivable		118,927					118,927
	Receivables, net	119,149						119,149
	Restricted investments		48,186					48,186
	Interest receivable		185		3,172		4,151	7,508
08	TOTAL ASSETS	<u>119,149</u>	<u>380,165</u>	<u></u>	<u>1,710,621</u>	<u>1,190,159</u>	<u>1,741,276</u>	<u>5,141,370</u>
LIABILITIES AND FUND BALANCES								
	LIABILITIES	<u>- 0 -</u>	<u>- 0 -</u>	<u>- 0 -</u>	<u>- 0 -</u>	<u>- 0 -</u>	<u>- 0 -</u>	<u>- 0 -</u>
	FUND BALANCES							
	Restricted for capital projects		48,186					48,186
	Assigned	119,149	331,979		1,710,621	1,190,159	1,741,276	5,093,184
	Total fund balances	<u>119,149</u>	<u>380,165</u>	<u></u>	<u>1,710,621</u>	<u>1,190,159</u>	<u>1,741,276</u>	<u>5,141,370</u>
	TOTAL LIABILITIES AND FUND BALANCES	<u>119,149</u>	<u>380,165</u>	<u></u>	<u>1,710,621</u>	<u>1,190,159</u>	<u>1,741,276</u>	<u>5,141,370</u>

CITY OF RAYMORE, MISSOURI
NONMAJOR GOVERNMENTAL FUNDS
COMBINED STATEMENT OF REVENUES, EXPENDITURES, AND CHANGES IN
FUND BALANCES
YEAR ENDED OCTOBER 31, 2017

	Special Revenue Funds		Capital Improvement Funds			Total Nonmajor Governmental Funds
	Development Projects Fund	Storm Water Sales Tax Fund	Public Works Fund	Capital Projects Fund	V.E.R.P. Fund	
REVENUES						
Taxes						
Sales		608,101		458,542		1,066,643
Refunds and reimbursements		401				401
Investment income		683		11,260		25,177
Total revenues		<u>609,185</u>		<u>469,802</u>	<u>13,234</u>	<u>1,092,221</u>
EXPENDITURES						
Debt service - principal		204,000				204,000
Debt service - interest		9,143				9,143
Capital outlay		<u>147,068</u>		<u>164,604</u>	<u>103,195</u>	<u>442,776</u>
Total expenditures		<u>360,211</u>		<u>164,604</u>	<u>27,909</u>	<u>655,919</u>
EXCESS OF REVENUES OVER (UNDER) EXPENDITURES						
		<u>248,974</u>		<u>305,198</u>	<u>(103,195)</u>	<u>436,302</u>
OTHER FINANCING SOURCES (USES)						
Transfers in				91,035	374,459	567,156
Transfers out		<u>(253,064)</u>	<u>(1,662)</u>	<u></u>	<u>(21,105)</u>	<u>(275,831)</u>
Total other financing sources (uses)		<u>(253,064)</u>	<u>(1,662)</u>	<u>91,035</u>	<u>353,354</u>	<u>291,325</u>
EXCESS OF REVENUES AND OTHER FINANCING SOURCES OVER (UNDER) EXPENDITURES AND OTHER FINANCING USES						
		(4,090)	(1,662)	396,233	250,159	86,987
FUND BALANCE, beginning of year	<u>119,149</u>	<u>384,255</u>	<u>1,662</u>	<u>1,314,388</u>	<u>940,000</u>	<u>4,413,743</u>
FUND BALANCE, end of year	<u>119,149</u>	<u>380,165</u>		<u>1,710,621</u>	<u>1,190,159</u>	<u>5,141,370</u>

CITY OF RAYMORE, MISSOURI
OTHER SUPPLEMENTARY INFORMATION
BUDGETARY COMPARISON SCHEDULE
MAJOR DEBT SERVICE FUND
YEAR ENDED OCTOBER 31, 2017

	Debt Service Fund			
	Original Budget	Final Budget	Actual	Variance Positive (Negative)
REVENUES				
Taxes				
Property	2,044,055	2,044,055	2,074,639	30,584
Fines and forfeitures	14,308	14,308	12,044	(2,264)
Interest	4,302	4,302	10,153	5,851
Total revenues	<u>2,062,665</u>	<u>2,062,665</u>	<u>2,096,836</u>	<u>34,171</u>
EXPENDITURES				
Principal	1,185,000	1,185,000	1,185,000	
Interest and fiscal fees	619,828	619,828	660,361	(40,533)
Total expenditures	<u>1,804,828</u>	<u>1,804,828</u>	<u>1,845,361</u>	<u>(40,533)</u>
EXCESS OF REVENUES OVER (UNDER) EXPENDITURES	<u>257,837</u>	<u>257,837</u>	<u>251,475</u>	<u>(6,362)</u>
OTHER FINANCING SOURCES (USES)				
Bond proceeds			44,000	44,000
Bond issuance costs			(42,750)	(42,750)
Transfers out	(153,525)	(153,525)	(133,333)	20,192
Total other financing sources (uses)	<u>(153,525)</u>	<u>(153,525)</u>	<u>(132,083)</u>	<u>21,442</u>
NET CHANGE IN FUND BALANCE	<u>104,312</u>	<u>104,312</u>	119,392	<u>15,080</u>
FUND BALANCE, beginning of year			<u>2,252,506</u>	
FUND BALANCE, end of year			<u>2,371,898</u>	

CITY OF RAYMORE, MISSOURI
OTHER SUPPLEMENTARY INFORMATION
BUDGETARY COMPARISON SCHEDULE
MAJOR CAPITAL IMPROVEMENT FUND
YEAR ENDED OCTOBER 31, 2017

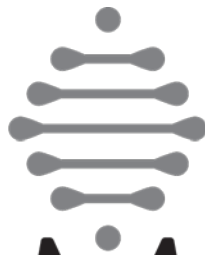
	Capital Improvement Fund			Variance Positive (Negative)
	Original Budget	Final Budget	Actual	
REVENUES				
Taxes				
Sales	1,271,935	1,271,935	1,216,154	(55,781)
Charges for services	2,800	2,800	2,863	63
Refunds and reimbursements	32,000	32,000	91,031	59,031
Miscellaneous			1,144	1,144
Interest	339	339	3,494	3,155
Total revenues	<u>1,307,074</u>	<u>1,307,074</u>	<u>1,314,686</u>	<u>7,612</u>
EXPENDITURES				
Administration			27,604	(27,604)
Capital outlay	746,500	746,500	1,532,626	(786,126)
Debt service				
Principal	425,000	425,000	425,000	
Interest and fiscal fees	492,850	492,850	492,750	100
Total expenditures	<u>1,664,350</u>	<u>1,664,350</u>	<u>2,477,980</u>	<u>(786,026)</u>
DEFICIENCY OF REVENUES UNDER EXPENDITURES				
	<u>(357,276)</u>	<u>(357,276)</u>	<u>(1,163,294)</u>	<u>(806,018)</u>
OTHER FINANCING USES				
Transfers in	326,171	326,171	326,171	
Transfers out	<u>(100,000)</u>	<u>(100,000)</u>	<u>(100,000)</u>	
Total other financing sources (uses)	<u>226,171</u>	<u>226,171</u>	<u>226,171</u>	
NET CHANGE IN FUND BALANCE				
	<u>(131,105)</u>	<u>(131,105)</u>	(937,123)	<u>(806,018)</u>
FUND BALANCE, beginning of year			<u>1,616,126</u>	
FUND BALANCE, end of year			<u>679,003</u>	

CITY OF RAYMORE, MISSOURI
OTHER SUPPLEMENTARY INFORMATION
BUDGETARY COMPARISON SCHEDULE
NONMAJOR GOVERNMENTAL FUNDS
YEAR ENDED OCTOBER 31, 2017

	Development Projects Fund				Storm Water Sales Tax Fund				Public Works Fund			
	Original Budget	Final Budget	Actual	Variance Positive (Negative)	Original Budget	Final Budget	Actual	Variance Positive (Negative)	Original Budget	Final Budget	Actual	Variance Positive (Negative)
REVENUES												
Taxes												
Sales					635,967	635,967	608,101	(27,866)				
Interest					345	345	683	338				
Reimbursements					277	277	401	124				
Total revenues					<u>636,589</u>	<u>636,589</u>	<u>609,185</u>	<u>462</u>				
EXPENDITURES												
Capital outlay					180,000	180,000	147,068	32,932				
Debt service												
Principal					204,000	204,000	204,000					
Interest and fiscal fees					4,892	4,892	9,143	(4,251)				
Total expenditures					<u>388,892</u>	<u>388,892</u>	<u>360,211</u>	<u>28,681</u>				
EXCESS OF REVENUES OVER (UNDER) EXPENDITURES					<u>247,697</u>	<u>247,697</u>	<u>248,974</u>	<u>1,277</u>				
OTHER FINANCING USES (USES)												
Transfers out					(258,115)	(258,115)	(253,064)	5,051			(1,662)	(1,662)
Total other financing sources (uses)					<u>(258,115)</u>	<u>(258,115)</u>	<u>(253,064)</u>	<u>5,051</u>			<u>(1,662)</u>	<u>(1,662)</u>
NET CHANGE IN FUND BALANCE					<u>(10,418)</u>	<u>(10,418)</u>	<u>(4,090)</u>	<u>6,328</u>			<u>(1,662)</u>	<u>(1,662)</u>
FUND BALANCE, beginning of year			<u>119,149</u>				<u>384,255</u>				<u>1,662</u>	
FUND BALANCE, end of year			<u>119,149</u>				<u>380,165</u>					

CITY OF RAYMORE, MISSOURI
OTHER SUPPLEMENTARY INFORMATION
BUDGETARY COMPARISON SCHEDULE
NONMAJOR GOVERNMENTAL FUNDS
YEAR ENDED OCTOBER 31, 2017

	Capital Projects Fund				V.E.R.P. Fund				B.E.R.P. Fund			
	Original Budget	Final Budget	Actual	Variance Positive (Negative)	Original Budget	Final Budget	Actual	Variance Positive (Negative)	Original Budget	Final Budget	Actual	Variance Positive (Negative)
REVENUES												
Taxes												
Sales	185,739	185,739	458,542	(458,542)								
Interest	2,922	2,922	11,260	8,338					2,288	2,288	13,234	10,946
Total revenues	<u>188,661</u>	<u>188,661</u>	<u>469,802</u>	<u>(450,204)</u>					<u>2,288</u>	<u>2,288</u>	<u>13,234</u>	<u>10,946</u>
EXPENDITURES												
Capital outlay	<u>155,000</u>	<u>855,000</u>	<u>164,604</u>	<u>690,396</u>	<u>153,436</u>	<u>153,436</u>	<u>103,195</u>	<u>50,241</u>	<u>166,000</u>	<u>166,000</u>	<u>27,909</u>	<u>138,091</u>
OT												
EXCESS OF REVENUES OVER (UNDER) EXPENDITURES	<u>33,661</u>	<u>(666,339)</u>	<u>305,198</u>	<u>971,537</u>	<u>(153,436)</u>	<u>(153,436)</u>	<u>(103,195)</u>	<u>50,241</u>	<u>(163,712)</u>	<u>(163,712)</u>	<u>(14,675)</u>	<u>(127,145)</u>
OTHER FINANCING SOURCES (USES)												
Transfers in	91,035	91,035	91,035		374,461	374,461	374,459	(2)	100,000	100,000	101,662	
Transfers out							(21,105)	(21,105)				
Total other financing sources (uses)	<u>91,035</u>	<u>91,035</u>	<u>91,035</u>		<u>374,461</u>	<u>374,461</u>	<u>353,354</u>	<u>(21,107)</u>	<u>100,000</u>	<u>100,000</u>	<u>101,662</u>	
NET CHANGE IN FUND BALANCE	<u>124,696</u>	<u>(575,304)</u>	<u>396,233</u>	<u>971,537</u>	<u>221,025</u>	<u>221,025</u>	<u>250,159</u>	<u>29,134</u>	<u>(63,712)</u>	<u>(63,712)</u>	<u>86,987</u>	<u>150,699</u>
FUND BALANCE, beginning of year			<u>1,314,388</u>				<u>940,000</u>				<u>1,654,289</u>	
FUND BALANCE, end of year			<u>1,710,621</u>				<u>1,190,159</u>				<u>1,741,276</u>	



RAYMORE

come home to more

Statistical Section

(This page has been left blank intentionally)

CITY OF RAYMORE, MISSOURI
STATISTICAL SECTION
(Unaudited)

This part of the City of Raymore's comprehensive annual financial report presents detailed information as a context for understanding what the information in the financial statements, note disclosures, and required supplementary information says about the City's overall financial health.

Contents	Page
Financial Trends These schedules contain trend information to help the reader understand how the City's financial performance and well-being have changed over time.	86 - 90
Revenue Trends These schedules contain information to help the reader assess the City's most significant own-source revenue, the property tax.	91 - 96
Debt Capacity These schedules present information to help the reader assess the affordability of the City's current levels of outstanding debt and the City's ability to issue additional debt in the future.	97 - 101
Demographic and Economic Information These schedules offer demographic and economic indicators to help the reader understand the environment within which the City's financial activities take place.	102 - 103
Operating Information These schedules contain service and infrastructure data to help the reader understand how the information in the City's financial report relates to the services the City provides and the activities it performs.	104 - 107

Sources: Unless otherwise noted, the information in these schedules is derived from the comprehensive annual financial reports for the relevant year. The City implemented GASB 54 in fiscal year 2011; schedules that include governmental fund balance classifications for fiscal years prior to 2011 are presented on pre-GASB 54 format; schedules that refer to net assets for fiscal years prior to 2013 are presented on pre-GASB 63 format; and schedules that include capitalized bond issue and related costs for fiscal years prior to 2013 are presented on pre-GASB 65 format.

Note: Information presented in this section is required by GASB 44 to include current year plus nine years of previous data.

(This page has been left blank intentionally)

CITY OF RAYMORE, MISSOURI
NET ASSETS/POSITION BY COMPONENT
LAST TEN FISCAL YEARS

	Fiscal Year									
	2008	2009	2010	2011	2012	2013	2014	2015	2016	2017
Governmental activities										
Net investment in										
capital assets	18,494,972	30,259,016	40,539,968	39,153,934	39,053,218	39,567,457	38,000,119	37,452,602	38,153,431	38,765,288
Restricted	18,293,358	8,542,671	4,113,386	2,315,880	1,799,602	553,071	624,827	535,620	7,375,155	800,537
Unrestricted	<u>4,834,098</u>	<u>4,825,302</u>	<u>4,958,949</u>	<u>8,554,216</u>	<u>8,883,193</u>	<u>8,841,052</u>	<u>11,008,252</u>	<u>14,542,289</u>	<u>7,934,193</u>	<u>11,821,135</u>
Total governmental activities	<u>41,622,428</u>	<u>43,626,989</u>	<u>49,612,303</u>	<u>50,024,030</u>	<u>49,736,013</u>	<u>48,961,580</u>	<u>49,633,198</u>	<u>52,530,511</u>	<u>53,462,779</u>	<u>51,386,960</u>
Business-type activities										
Net investment in										
capital assets	36,547,690	37,204,862	35,413,946	34,507,565	33,580,927	32,351,316	30,033,905	28,365,650	27,117,334	26,357,106
Restricted	1,948,711	1,089,846	1,562,478	1,166,923	246,938	84,638	86,122	87,689	85,179	86,664
Unrestricted	<u>7,018,411</u>	<u>5,282,292</u>	<u>4,883,880</u>	<u>5,315,378</u>	<u>5,490,510</u>	<u>5,512,505</u>	<u>5,759,617</u>	<u>5,753,745</u>	<u>5,885,685</u>	<u>5,695,947</u>
Total business-type activities	<u>45,514,812</u>	<u>43,577,000</u>	<u>41,860,304</u>	<u>40,989,866</u>	<u>39,318,375</u>	<u>37,948,459</u>	<u>35,879,644</u>	<u>34,207,084</u>	<u>33,088,198</u>	<u>32,139,717</u>
Primary government										
Net investment in										
capital assets	55,042,662	67,463,878	75,953,914	73,661,499	72,634,145	71,918,773	68,034,024	65,818,252	65,270,765	65,122,394
Restricted	20,242,069	9,632,517	5,675,864	3,482,803	2,046,540	637,709	710,949	623,309	7,460,334	887,201
Unrestricted	<u>11,852,509</u>	<u>10,107,594</u>	<u>9,842,829</u>	<u>13,869,594</u>	<u>14,373,703</u>	<u>14,353,557</u>	<u>16,767,869</u>	<u>20,296,034</u>	<u>13,819,878</u>	<u>17,517,082</u>
Total primary government net assets/position	<u>87,137,240</u>	<u>87,203,989</u>	<u>91,472,607</u>	<u>91,013,896</u>	<u>89,054,388</u>	<u>86,910,039</u>	<u>85,512,842</u>	<u>86,737,595</u>	<u>86,550,977</u>	<u>83,526,677</u>

CITY OF RAYMORE, MISSOURI
CHANGES IN NET ASSETS/POSITION
LAST TEN FISCAL YEARS

	Fiscal Year									
	2008	2009	2010	2011	2012	2013	2014	2015	2016	2017
EXPENSES										
Governmental activities										
Administration	1,783,460	1,383,349	1,643,846	1,801,232	1,673,233	1,802,225	1,819,426	1,993,658	2,339,563	3,227,491
Development	823,065	769,986	726,471	739,675	772,445	770,973	756,204	741,272	697,722	1,135,925
Parks and property	1,044,180	1,183,045	1,501,150	1,670,554	1,753,973	1,743,964	1,829,441	1,801,745	2,058,635	2,476,134
Public works	1,385,134	1,274,025	4,866,429	4,362,832	4,912,478	4,921,345	5,043,992	5,074,817	5,120,166	5,595,388
Public safety	3,105,732	3,037,085	2,896,797	3,298,657	3,505,101	3,723,794	3,722,111	3,744,683	3,828,554	5,285,604
Interest and fiscal charges	2,141,700	1,325,298	1,219,667	1,039,036	1,520,146	1,862,029	1,522,955	1,166,710	1,052,101	1,061,495
Depreciation and amortization	3,036,210	3,421,006								
Total governmental activities expenses	<u>13,319,481</u>	<u>12,393,794</u>	<u>12,854,360</u>	<u>12,911,986</u>	<u>14,137,376</u>	<u>14,824,330</u>	<u>14,694,129</u>	<u>14,522,885</u>	<u>15,096,741</u>	<u>18,782,037</u>
Business-type activities										
Water and sewer	<u>6,145,864</u>	<u>6,145,487</u>	<u>7,266,387</u>	<u>7,393,722</u>	<u>7,913,766</u>	<u>7,875,853</u>	<u>8,193,599</u>	<u>8,285,704</u>	<u>8,581,972</u>	<u>8,765,035</u>
Total business-type activities expenses	<u>6,145,864</u>	<u>6,145,487</u>	<u>7,266,387</u>	<u>7,393,722</u>	<u>7,913,766</u>	<u>7,875,853</u>	<u>8,193,599</u>	<u>8,285,704</u>	<u>8,581,972</u>	<u>8,765,035</u>
Total primary government expenses	<u>19,465,345</u>	<u>18,539,281</u>	<u>20,120,747</u>	<u>20,305,708</u>	<u>22,051,142</u>	<u>22,700,183</u>	<u>22,887,728</u>	<u>22,808,589</u>	<u>23,678,713</u>	<u>27,547,072</u>
PROGRAM REVENUES										
Governmental activities										
Charges for services										
General government	940,127	790,456	498,181	451,868	549,896	599,857	647,747	664,683	755,033	919,481
Parks and recreation	270,419	269,069	316,810	327,006	375,369	309,869	291,370	380,238	400,582	426,162
Other activities	299,015	390,434	329,892	360,157	383,597	504,898	483,232	406,231	424,649	359,628
Operating grants and contributions	77,266	91,701	590,145	211,951	255,394	82,360	61,192	67,126	71,797	69,997
Capital grants and contributions	<u>3,797,631</u>	<u>303,372</u>	<u>5,127,759</u>		<u>21,593</u>					
Total governmental activities program revenues	<u>5,384,458</u>	<u>1,845,032</u>	<u>6,862,787</u>	<u>1,350,982</u>	<u>1,585,849</u>	<u>1,496,984</u>	<u>1,483,541</u>	<u>1,518,278</u>	<u>1,652,061</u>	<u>1,775,268</u>
Business-type activities										
Charges for services:										
Water and sewer	5,286,038	4,846,651	5,902,537	6,207,730	6,744,467	6,880,197	6,781,226	7,059,295	8,131,367	8,578,799
Capital grants and contributions	<u>1,636,176</u>			<u>500,992</u>						
Total business-type activities program revenues	<u>6,922,214</u>	<u>4,846,651</u>	<u>5,902,537</u>	<u>6,708,722</u>	<u>6,744,467</u>	<u>6,880,197</u>	<u>6,781,226</u>	<u>7,059,295</u>	<u>8,131,367</u>	<u>8,578,799</u>
Total primary government program revenues	<u>12,306,672</u>	<u>6,691,683</u>	<u>12,765,324</u>	<u>8,059,704</u>	<u>8,330,316</u>	<u>8,377,181</u>	<u>8,264,767</u>	<u>8,577,573</u>	<u>9,783,428</u>	<u>10,354,067</u>

CITY OF RAYMORE, MISSOURI
CHANGES IN NET ASSETS/POSITION
LAST TEN FISCAL YEARS

		Fiscal Year									
		2008	2009	2010	2011	2012	2013	2014	2015	2016	2017
NET (EXPENSE) REVENUE											
	Governmental activities	(10,548,762)	(5,991,573)	(11,561,004)	(12,551,527)	(13,327,346)	(13,327,346)	(13,210,588)	(13,004,607)	(13,444,680)	(17,006,769)
	Business-type activities	(1,298,836)	(1,363,850)	(685,000)	(1,169,299)	(995,656)	(995,656)	(1,412,373)	(1,226,409)	(450,605)	(186,236)
	Total primary government net expense	<u>(11,847,598)</u>	<u>(7,355,423)</u>	<u>(12,246,004)</u>	<u>(13,720,826)</u>	<u>(14,323,002)</u>	<u>(14,323,002)</u>	<u>(14,622,961)</u>	<u>(14,231,016)</u>	<u>(13,895,285)</u>	<u>(17,193,005)</u>
GENERAL REVENUES AND OTHER											
CHANGES IN NET ASSETS/POSITION											
	Governmental activities										
	Taxes										
	Property taxes	3,139,336	3,358,679	3,407,529	3,496,621	3,445,862	3,508,997	3,429,392	3,556,910	3,648,361	3,779,036
	Sales taxes	4,678,101	4,669,535	4,675,656	4,839,372	4,912,344	5,025,263	6,033,939	6,186,046	6,325,936	6,992,740
	Franchise taxes	2,604,620	2,259,873	2,479,055	2,634,537	2,251,800	2,276,711	2,353,584	2,331,584	2,199,361	2,131,712
	Other taxes	532,404	498,876	534,372	491,126	899,442	1,286,313	1,036,242	1,147,192	1,179,433	882,325
	Investment earnings	873,841	323,373	56,963	69,938	22,103	49,156	64,282	83,632	116,466	165,029
	Miscellaneous	292,137	595,530	323,977	220,403	138,423	211,769	259,492	253,952	188,575	164,184
	Transfers	(652,743)	847,457	499,335	220,734	593,536	460,151	705,275	718,066	718,816	815,924
	Total governmental activities	<u>11,467,696</u>	<u>12,553,323</u>	<u>11,976,887</u>	<u>11,972,731</u>	<u>12,263,510</u>	<u>12,818,360</u>	<u>13,882,206</u>	<u>14,277,382</u>	<u>14,376,948</u>	<u>14,930,950</u>
	Business-type activities										
	Investment earnings	428,361	208,481	146,489	114,550	91,344	88,231	48,833	54,074	50,535	53,679
	Miscellaneous				20,078		21,500				
	Transfers	652,743	(847,457)	(499,335)	(320,066)	(593,536)	(460,151)	(705,275)	(718,066)	(718,816)	(815,924)
	Total business-type activities	<u>1,081,104</u>	<u>(638,976)</u>	<u>(352,846)</u>	<u>(185,438)</u>	<u>(502,192)</u>	<u>(350,420)</u>	<u>(656,442)</u>	<u>(663,992)</u>	<u>(668,281)</u>	<u>(762,245)</u>
	Total primary government	<u>12,548,800</u>	<u>11,914,347</u>	<u>11,624,041</u>	<u>11,787,293</u>	<u>11,761,318</u>	<u>12,467,940</u>	<u>13,225,764</u>	<u>13,613,390</u>	<u>13,708,667</u>	<u>14,168,705</u>
CHANGE IN NET ASSETS/POSITION											
	Governmental activities	918,934	6,561,750	415,883	(578,796)	(1,063,836)	(508,986)	671,618	1,272,775	932,268	(2,075,819)
	Business-type activities	(217,732)	(2,002,826)	(1,037,846)	(1,354,737)	(1,497,848)	(1,346,076)	(2,068,815)	(1,890,401)	(1,118,886)	(948,481)
	Total primary government	<u>701,202</u>	<u>4,558,924</u>	<u>(621,963)</u>	<u>(1,933,533)</u>	<u>(2,561,684)</u>	<u>(1,855,062)</u>	<u>(1,397,197)</u>	<u>(617,626)</u>	<u>(186,618)</u>	<u>(3,024,300)</u>

CITY OF RAYMORE, MISSOURI
 FUND BALANCES OF GOVERNMENTAL FUNDS
 LAST TEN FISCAL YEARS

	Fiscal Year									
	2008	2009	2010	2011	2012	2013	2014	2015	2016	2017
GENERAL FUND										
Nonspendable				118,115	148,543	132,664	134,966	145,425	190,428	204,256
Restricted				145,066	145,066	94,766	166,623	124,809	106,342	106,984
Committed				114,666	20,000	20,000	1,020,000	1,020,000	20,000	20,000
Assigned				99,044	99,044		27,000	1,021,510	498,029	324,241
Unassigned				4,445,004	4,710,296	3,363,347	3,214,700	3,167,016	2,684,833	2,881,129
Reserved	161,926	97,655	82,583							
Unreserved	2,866,224	3,852,162	4,425,631							
Total General Fund	<u>3,028,150</u>	<u>3,949,817</u>	<u>4,508,214</u>	<u>4,921,895</u>	<u>5,122,949</u>	<u>3,610,777</u>	<u>4,563,289</u>	<u>5,478,760</u>	<u>3,499,632</u>	<u>3,536,610</u>
ALL OTHER GOVERNMENTAL FUNDS										
Nonspendable				6,606	7,235	8,623	8,260	7,149	13,188	15,926
Restricted				2,170,814	1,654,536	15,320,180	15,018,611	467,691	7,268,813	7,539,818
Assigned				4,266,305	4,476,800	6,253,012	7,568,489	8,064,984	10,125,255	10,483,626
Reserved	18,236,754	8,554,270	6,538,157							
Unreserved, reported in:										
Special revenue funds	2,504,736	1,612,675	23,511							
Total all other governmental funds	<u>20,741,490</u>	<u>10,166,945</u>	<u>6,561,668</u>	<u>6,443,725</u>	<u>6,138,571</u>	<u>21,581,815</u>	<u>22,595,360</u>	<u>8,539,824</u>	<u>17,407,256</u>	<u>18,039,370</u>
TOTAL ALL GOVERNMENTAL FUNDS	<u>23,769,640</u>	<u>14,116,762</u>	<u>11,069,882</u>	<u>11,365,620</u>	<u>11,261,520</u>	<u>25,192,592</u>	<u>27,158,649</u>	<u>14,018,584</u>	<u>20,906,888</u>	<u>21,575,980</u>

Beginning in fiscal year 2011, governmental fund balances were classified in accordance with GASB Statement No. 54.

CITY OF RAYMORE, MISSOURI
CHANGES IN FUND BALANCES OF GOVERNMENTAL FUNDS
LAST TEN FISCAL YEARS

		Fiscal Year									
		2008	2009	2010	2011	2012	2013	2014	2015	2016	2017
	REVENUES										
	Taxes										
	Property	3,139,336	3,358,679	3,407,529	3,496,621	3,387,102	3,500,391	3,461,091	3,550,541	3,648,023	3,783,196
	Franchise	2,604,620	2,259,873	2,479,055	2,634,537	2,251,800	2,276,711	2,353,584	2,331,584	2,199,361	2,131,712
	Sales	4,678,101	4,669,535	4,675,656	4,839,372	4,912,344	5,025,263	6,033,939	6,186,046	6,325,936	6,992,740
	Other	532,404	498,876	534,372	491,126	899,442	1,286,313	1,036,242	1,147,192	1,179,433	882,325
	Fees and permits	1,196,195	1,041,586	798,432	762,800	909,980	892,039	928,177	1,033,176	1,143,867	1,333,599
	Municipal court	313,366	408,373	346,451	376,231	398,882	522,585	494,172	417,976	436,397	371,672
	Miscellaneous	1,018,768	1,313,976	959,885	502,292	437,513	320,402	384,966	404,710	333,410	399,210
	Total revenues	<u>13,482,790</u>	<u>13,550,898</u>	<u>13,201,380</u>	<u>13,102,979</u>	<u>13,197,063</u>	<u>13,823,704</u>	<u>14,692,171</u>	<u>15,071,225</u>	<u>15,266,427</u>	<u>15,894,454</u>
	EXPENDITURES										
	General government	1,773,711	1,413,311	1,522,387	1,690,864	1,544,528	1,675,899	1,675,117	1,857,499	2,157,040	2,230,410
	Public safety	3,081,156	3,037,085	2,848,533	3,138,478	3,361,929	3,552,210	3,567,792	3,609,597	3,610,786	4,138,193
	Public works	1,378,383	1,274,025	1,506,969	1,425,662	1,443,554	1,515,057	1,563,520	1,532,564	1,479,901	1,460,830
	Parks and property	1,048,886	1,180,864	1,219,764	1,247,237	1,329,439	1,255,718	1,326,753	1,274,017	1,462,997	1,468,411
	Planning and development	816,418	769,985	720,680	731,660	754,188	752,424	749,222	725,383	673,211	776,979
	Capital outlay and other charges	6,373,624	9,811,888	6,523,829	2,300,517	2,514,250	3,454,001	1,683,150	2,907,287	6,713,574	5,745,495
	Debt service										
	Principal	2,391,049	6,772,029	1,142,840	1,251,348	1,533,000	3,604,000	1,249,000	15,381,373	3,699,000	1,860,000
	Interest	1,682,137	1,428,966	1,273,793	1,242,209	1,413,811	1,557,370	1,616,835	1,641,636	919,221	1,228,004
	Total expenditures	<u>18,545,364</u>	<u>25,688,153</u>	<u>16,758,795</u>	<u>13,027,975</u>	<u>13,894,699</u>	<u>17,366,679</u>	<u>13,431,389</u>	<u>28,929,356</u>	<u>20,715,730</u>	<u>18,908,322</u>
	EXCESS OF REVENUES OVER (UNDER) EXPENDITURES	<u>(5,062,574)</u>	<u>(12,137,255)</u>	<u>(3,557,415)</u>	<u>75,004</u>	<u>(697,636)</u>	<u>(3,542,975)</u>	<u>1,260,782</u>	<u>(13,858,131)</u>	<u>(5,449,303)</u>	<u>(3,013,868)</u>
	OTHER FINANCING SOURCES (USES)										
	Transfers in	3,194,677	2,316,725	2,182,838	2,980,679	2,289,615	4,351,668	2,272,709	2,543,555	5,323,115	2,755,804
	Transfers out	(3,847,420)	(1,469,268)	(1,683,503)	(2,759,945)	(1,696,079)	(3,891,517)	(1,567,434)	(1,825,489)	(4,604,299)	(1,939,880)
	Bond proceeds	2,515,000	1,640,000				16,485,000			11,340,000	2,750,000
	Bond issuance costs	(40,901)	(45,674)				(289,046)			(133,833)	
	Premium on bonds issued	62,642					817,942			412,624	160,119
	Sale of capital assets	18,123	42,594	11,200							
	Total other financing sources (uses)	<u>1,902,121</u>	<u>2,484,377</u>	<u>510,535</u>	<u>220,734</u>	<u>593,536</u>	<u>17,474,047</u>	<u>705,275</u>	<u>718,066</u>	<u>12,337,607</u>	<u>3,726,043</u>
	NET CHANGES IN FUND BALANCES	<u>(3,160,453)</u>	<u>(9,652,878)</u>	<u>(3,046,880)</u>	<u>295,738</u>	<u>(104,100)</u>	<u>13,931,072</u>	<u>1,966,057</u>	<u>(13,140,065)</u>	<u>6,888,304</u>	<u>712,175</u>
	DEBT SERVICE AS A PERCENTAGE OF NONCAPITAL EXPENDITURES	33.46%	51.66%	23.61%	23.24%	25.89%	37.10%	24.39%	65.42%	32.98%	23.46%

CITY OF RAYMORE, MISSOURI
 GOVERNMENTAL ACTIVITIES TAX REVENUES BY SOURCE
 LAST TEN YEARS

Fiscal Year	Property Tax	Sales Tax	Franchise Tax	Other Taxes	Total
2008	3,139,336	4,678,101	2,604,620	532,404	10,954,461
2009	3,358,679	4,669,535	2,259,873	498,876	10,786,963
2010	3,407,529	4,675,656	2,479,055	534,372	11,096,612
2011	3,496,621	4,839,372	2,634,537	491,126	11,461,656
2012	3,387,102	4,912,344	2,251,800	899,442	11,450,688
2013	3,500,391	5,025,263	2,276,711	1,286,313	12,088,678
2014	3,461,091	6,033,939	2,353,584	1,036,242	12,884,856
2015	3,550,541	6,186,046	2,331,584	1,147,192	13,215,363
2016	3,648,023	6,325,936	2,199,361	1,179,433	13,352,753
2017	3,783,196	6,992,740	2,131,712	882,325	13,789,973

CITY OF RAYMORE, MISSOURI
 DIRECT AND OVERLAPPING SALES TAX RATES
 LAST TEN YEARS

Fiscal Year	City of Raymore Rates					Overlapping Rates				Total Direct and Overlapping Rates
	General Rate	Capital Improvement Rate	Parks and Storm Water Rate	Miscellaneous Rate	Total Rate	Missouri State Rate	Cass County Rate	South Metro Fire District Rate	Special Districts Rate	
2008	1.000	0.500	0.500	0.500	2.500	4.225	1.250	0.500	0.500	8.975
2009	1.000	0.500	0.500	0.500	2.500	4.225	1.250	0.500	0.500	8.975
2010	1.000	0.500	0.500	0.500	2.500	4.225	1.250	0.500	0.750	9.225
2011	1.000	0.500	0.500	0.500	2.500	4.225	1.250	0.500	0.750	9.225
2012	1.000	0.500	0.500	0.500	2.500	4.225	1.750	0.500	0.750	9.725
2013	1.000	0.500	0.500	0.500	2.500	4.225	1.750	0.500	1.000	9.975
2014	1.000	0.500	0.500	0.500	2.500	4.225	1.750	0.500	1.000	9.975
2015	1.000	0.500	0.500	0.500	2.500	4.225	1.750	0.500	1.000	9.975
2016	1.000	0.500	0.500	0.500	2.500	4.225	1.750	0.500	1.000	9.975
2017	1.000	0.500	0.500	0.500	2.500	4.225	2.000	0.500	1.000	10.225

Source: Missouri Department of Revenue

CITY OF RAYMORE, MISSOURI
 ASSESSED VALUE AND ESTIMATED ACTUAL VALUE OF TAXABLE PROPERTY
 LAST TEN FISCAL YEARS

Fiscal Year Ended October 31,	Real Property			Other Property		Total Taxable Assessed Value	Total Direct Tax Rate	Estimated Market Value	Assessed Value as a Percentage of Actual Value
	Residential Property	Commercial Property	Agricultural Property	Personal Property	Railroads and Utilities				
2008	192,072,335	18,079,880	330,390	35,585,238	1,953,997	248,021,840	1.3068	1,184,100,196	20.97%
2009	197,967,160	19,590,740	329,320	37,907,071	1,955,799	257,750,090	1.3068	1,226,879,601	21.04%
2010	201,271,100	20,424,640	365,860	35,837,986	2,674,555	260,574,141	1.3068	1,243,155,354	20.99%
2011	202,361,370	20,537,420	365,740	34,454,575	3,728,143	261,447,248	1.3068	1,248,345,363	20.97%
2012	205,099,010	20,630,944	367,550	37,547,968	4,675,703	268,321,175	1.3068	1,275,396,383	21.07%
2013	200,947,260	20,821,980	359,135	40,933,507	6,329,992	269,391,874	1.3068	1,269,500,792	21.25%
2014	204,618,050	21,429,900	358,875	41,497,815	7,013,988	274,918,628	1.3068	1,294,565,835	21.24%
2015	211,196,480	21,432,690	367,590	42,455,915	7,969,364	283,422,039	1.3057	1,335,159,378	21.23%
2016	217,700,385	21,789,220	366,070	42,920,451	8,126,328	290,902,454	1.3057	1,372,390,144	21.20%
2017	239,059,830	24,706,570	365,110	44,974,495	7,809,274	316,915,279	1.2856	1,498,029,624	21.16%

CG

Note: Assessed value is set at 19% for residential property; 12% for agricultural property; and 32% for commercial property of the estimated fair market value.

Source: Cass County Collector's Office

CITY OF RAYMORE, MISSOURI
PROPERTY TAX RATES
DIRECT AND OVERLAPPING GOVERNMENTS
LAST TEN FISCAL YEARS

Fiscal Year	City of Raymore Rates				Overlapping Rates										Total Direct and Overlapping Rates
	Operating Millage	Debt Service Millage	Park Maintenance Millage	Total City Millage	Missouri State Millage	Hospital Millage	Library Millage	Sheltered Workshop Millage	Cass County Road and Bridge Millage	South Metro Fire District Millage	South Metro Ambulance District Millage	Raymore-Peculiar School District Millage	Special Districts Millage		
2008	0.4647	0.7170	0.1251	1.3068	0.0300	0.1335	0.1500	0.0381	0.2480	0.6638	0.3696	5.0397		7.9795	
2009	0.4647	0.7170	0.1251	1.3068	0.0300	0.1351	0.1500	0.0385	0.2509	0.6607	0.3673	5.0397	0.6000	7.9790	
2010	0.4647	0.7170	0.1251	1.3068	0.0300	0.1351	0.1500	0.0500	0.2520	0.6684	0.3729	5.0397	0.6000	8.0049	
2011	0.4647	0.7170	0.1251	1.3068	0.0300	0.1357	0.1500	0.0500	0.2520	0.6997	0.3766	5.0397	0.6000	8.0405	
2012	0.4647	0.7170	0.1251	1.3068	0.0300	0.1357	0.1500	0.0500	0.2520	0.6997	0.3766	5.0397	0.6000	8.0405	
2013	0.4647	0.7170	0.1251	1.3068	0.0300	0.1360	0.1500	0.0500	0.2300	0.7091	0.3834	5.0397	0.6000	8.0350	
2014	0.4647	0.7170	0.1251	1.3068	0.0300	0.1360	0.1500	0.0500	0.2300	0.7070	0.3820	5.0397	0.6000	8.0315	
2015	0.4638	0.7170	0.1249	1.3057	0.0300	0.1356	0.1495	0.0498	0.2287	0.7070	0.3820	5.0397	0.0579	8.0280	
2016	0.4638	0.7170	0.1249	1.3057	0.0300	0.1356	0.1495	0.0498	0.2287	0.7227	0.3609	5.0397	0.0579	8.0226	
2017	0.4480	0.7170	0.1206	1.2856	0.0300	0.1318	0.1454	0.0484	0.2220	0.7458	0.3617	4.9122	0.5785	7.8829	

94

1. Overlapping rates are those of local, county, and state governments that apply to property owners within the City of Raymore. Not all overlapping rates apply to all City of Raymore property owners (e.g., the rates for special districts apply only to the proportion of the government's property owners whose property is located within the geographic boundaries of the special district).
2. The City has other special districts that have not imposed levies or do not currently have any taxable property.

CITY OF RAYMORE, MISSOURI
 PRINCIPAL PROPERTY TAXPAYERS
 CURRENT YEAR AND TEN YEARS AGO

Taxpayer	2017			2008		
	Taxable Assessed Value	Rank	Percentages of Total Assessed Valuation	Taxable Assessed Value	Rank	Percentages of Total Assessed Valuation
Sam's Club	3,646,200	1	1.15	3,404,300	1	1.37
Launch Raymore, LLC (Manor Homes Apts.)	2,991,270	2	0.94			
Wal-Mart	2,970,600	3	0.94			
Lowe's (Jemsite Development)	2,358,940	4	0.74	1,342,480	2	0.54
Raymore Group, LLC (Raymore Mkt. Ctr.)	2,221,390	5	0.70			
Foxwood Springs	1,559,530	6	0.49	1,093,395	3	0.44
Laclede Gas Co (formerly Missouri Gas Energy)	1,324,280	7	0.42	720,900	5	0.29
Raymore SLP LLC	882,890	8	0.28			
Community Bank of Raymore	863,520	9	0.27	382,990	10	
MBSR Raymore MO, LLC (Walgreens)	767,720	10	0.24			
Willowind LLC				902,140	4	0.36
Ladd, Glenn W. Trust				541,210	6	0.22
Comcast of Missouri				457,280	7	0.18
Raymore Health Care & Rehab, Inc. (East)				402,470	8	0.16
Ryan's Steak House				386,120	9	0.16
TOTALS	<u>19,586,340</u>		<u>6.18</u>	<u>9,633,285</u>		<u>3.72</u>
Total Commercial Real Property Assessed Value for Year	24,706,570			18,079,880		
Total Real, Personal, and Other Property Assessed Value for Year	316,915,279			248,352,230		

Source: Cass County Collector's Office

CITY OF RAYMORE, MISSOURI
PROPERTY TAX LEVIES AND COLLECTIONS
LAST TEN FISCAL YEARS

Fiscal Year Ended October 31,	Total Tax Levy for Fiscal Year	Collected Within the Fiscal Year of the Levy		Collections in Subsequent Years	Total Collections to Date	
		Amount	Percentage of Levy		Amount	Percentage of Levy
2008	3,245,467	2,944,747	90.734%	300,720	3,245,467	100.000%
2009	3,372,582	3,156,012	93.579%	216,570	3,372,582	100.000%
2010	3,405,183	3,281,939	96.381%	123,244	3,405,183	100.000%
2011	3,416,593	3,153,260	92.164%	65,220	3,218,480	94.201%
2012	3,506,421	3,357,699	95.628%	58,534	3,416,233	97.428%
2013	3,520,413	3,440,452	97.729%	46,267	3,486,719	99.043%
2014	3,592,637	3,399,903	94.635%	45,277	3,445,180	95.896%
2015	3,700,642	3,518,468	95.077%	49,563	3,568,031	96.417%
2016	3,798,313	3,516,570	92.582%	42,958	3,559,528	93.713%
2017	4,074,263	3,588,950	88.088%		3,588,950	88.088%

96

Source: Cass County Collector's Office

CITY OF RAYMORE, MISSOURI
RATIOS OF OUTSTANDING DEBT BY TYPE
LAST TEN FISCAL YEARS

Fiscal Year	Governmental Activities				Business-Type	Total Primary Government	Percentage of Personal Income	Per Capita
	G.O. Bonds C.A. Bonds Notes Payable	Special Obligation Bonds	Capital Lease	Certificates of Participation	General Obligation Bonds			
2008	26,107,565	3,995,000		2,020,000	2,980,000	35,102,565	9.08%	2,152.74
2009	21,725,563	3,820,000		1,640,000	2,575,000	29,760,563	5.57%	1,732.48
2010	20,960,723	3,645,000		1,455,000	2,145,000	28,205,723	5.49%	1,556.18
2011	20,357,373	3,445,000		1,265,000	1,685,000	26,752,373	4.96%	1,392.92
2012	19,219,373	3,245,000		1,070,000	1,240,000	24,774,373	4.29%	1,282.45
2013	36,046,675	3,035,000		870,000	765,000	40,716,675	7.00%	2,082.69
2014	32,418,118	2,820,000		665,000	661,249	36,564,367	6.06%	1,850.99
2015	17,414,815	2,590,000		450,000	540,000	20,994,815	3.44%	1,051.69
2016	24,144,001	4,040,000		230,000	415,000	28,829,001	4.73%	1,414.99
2017	25,746,677	3,620,000	9,910		285,000	29,661,587	4.79%	1,423.37

97

Note: The per capita ratios are calculated using personal income and population data see page 102.

CITY OF RAYMORE, MISSOURI
RATIOS OF GENERAL BONDED DEBT OUTSTANDING
LAST TEN FISCAL YEARS

Fiscal Year	General Obligation Bonds	(A) Less Amounts Available in Debt Service Fund	Total	Percentage of Estimated Actual Taxable Value of Property	Per Capita
2008	26,107,565	(4,874,464)	21,233,101	1.79%	1,199.41
2009	21,725,563	(1,063,712)	20,661,851	1.69%	1,139.96
2010	20,357,373	(910,021)	19,447,352	1.56%	1,012.57
2011	19,815,000	(743,481)	19,071,519	1.56%	1,033.61
2012	18,695,000	(556,619)	18,138,381	1.51%	996.91
2013	32,005,000	(15,805,877)	16,199,123	1.25%	820.04
2014	31,931,745	(15,769,505)	16,162,240	1.25%	818.18
2015	17,249,815	(9,450)	17,240,365	1.29%	863.62
2016	23,998,001	(613,628)	23,384,373	1.70%	1,147.76
2017	25,620,677	(602,284)	25,018,393	1.67%	1,200.56

Notes: See page 93 for property value data
See page 102 for population data
(A) See page 27 for Debt Service Fund Balance

CITY OF RAYMORE, MISSOURI
 DIRECT AND OVERLAPPING GOVERNMENTAL ACTIVITIES DEBT
 AS OF OCTOBER 31, 2017

Governmental Unit	Debt Outstanding	Estimated Percentage Applicable	Estimated Share of Overlapping Debt
Debt repaid with property taxes Raymore-Peculiar School District	62,813,700	82.69%	51,942,470
City of Raymore, Missouri, Direct Debt			<u>29,376,587</u>
Total direct and overlapping debt			<u><u>81,319,057</u></u>

Note: The school district is the only outstanding, overlapping debt paid by property taxes. The County and all other levying districts do not use property tax for outstanding debt or have no outstanding debt.

Method of calculation: The estimated percentage applicable is the ratio of property valuation for the City compared to the total property valuation of the school district. This ratio is then multiplied by the school district's total debt outstanding to calculate the taxpayers share of the City of Raymore's debt.

CITY OF RAYMORE, MISSOURI
LEGAL DEBT MARGIN INFORMATION
LAST TEN FISCAL YEARS

	Fiscal Year									
	2008	2009	2010	2011	2012	2013	2014	2015	2016	2017
Debt Limit	49,670,446	51,615,882	52,188,000	52,114,828	53,664,235	53,950,202	54,983,726	56,684,408	58,180,491	63,383,056
Total net debt applicable to limit	<u>23,622,565</u>	<u>20,220,324</u>	<u>20,050,702</u>	<u>19,851,519</u>	<u>19,071,519</u>	<u>35,471,371</u>	<u>20,133,613</u>	<u>18,844,332</u>	<u>26,161,495</u>	<u>29,376,587</u>
Legal debt margin	<u>26,047,881</u>	<u>31,395,558</u>	<u>32,137,298</u>	<u>32,263,309</u>	<u>34,592,716</u>	<u>18,478,831</u>	<u>34,850,113</u>	<u>37,840,076</u>	<u>32,018,996</u>	<u>34,006,469</u>
Total net debt applicable to the limit as a percentage of the debt limit	47.56%	39.17%	38.42%	38.09%	35.54%	65.75%	36.62%	33.24%	44.97%	46.35%

Legal Debt Margin Calculation for Fiscal Year 2016

Assessed value	316,915,279
Add back: exempt real property	- 0 -
Total assessed value	<u>316,915,279</u>
Debt limit (20% of total assessed value)	63,383,056
Debt applicable to limit:	
Governmental long-term debt	29,376,587
Less: Amount set aside for repayment of general obligation debt	
Total net debt applicable to limit	<u>29,376,587</u>
Legal debt margin	<u>34,006,469</u>

Note: Article 6, Section 26(b and c) of the Missouri Constitution permits any county or city, by vote of four-sevenths of qualified electors thereon, to incur an indebtedness for city purposes not to exceed 5 percent of the value of the taxable tangible property therein.

Note: Article 6, Section 26(d and e) of the Missouri Constitution permits any city to become indebted not exceeding in the aggregate an additional 10 percent of the value of the taxable tangible property for the purpose of acquiring right-of-ways, construction of waterworks, electric plants, or other light plants provided the total general obligated indebtedness of the city does not exceed 20 percent of the assessed valuation.

CITY OF RAYMORE, MISSOURI
 PLEDGED REVENUE COVERAGE
 LAST TEN FISCAL YEARS

Fiscal Year	Water and Sewer Charges and Other	Less Operating Expenses	Net Available Revenue	General Obligation Bonds			Sales Tax Revenues	Certificates of Participation and Special Obligation Bonds		
				Debt Service				Debt Service		
				Principal	Interest	Coverage		Principal	Interest	Coverage
2008	5,145,077	3,407,794	1,737,283	1,659,644	223,998	(146,359)	1,255,734	315,000	285,414	655,320
2009	4,659,919	3,375,281	1,284,638	405,000	200,570	679,068	1,343,472	555,000	183,030	605,441
2010	5,902,537	4,358,066	1,544,471	430,000	165,203	949,268	1,545,588	360,000	208,138	977,450
2011	6,207,730	4,821,005	1,386,725	420,000	126,456	840,269	1,839,424	390,000	196,320	1,253,104
2012	6,744,467	5,139,786	1,604,681	445,000	109,829	1,049,852	1,833,982	395,000	183,346	1,255,636
2013	6,880,197	5,066,488	1,813,709	475,000	69,819	1,268,890	1,878,039	410,000	164,579	1,303,460
2014	6,781,226	5,333,866	1,447,360	110,000	45,597	1,291,763	2,270,295	420,000	154,759	1,695,536
2015	7,059,295	5,477,323	1,581,972	115,000	41,536	1,425,436	2,323,008	445,000	121,522	1,756,486
2016	8,131,367	5,806,839	2,324,528	125,000	36,917	2,162,611	2,358,770	390,000	130,992	1,837,778
2017	8,578,799	3,392,721	5,186,078	130,000	26,167	5,029,911	2,432,307	650,000	100,005	1,682,302

101

Note: Details regarding the City's outstanding debt can be found in the notes to the financial statements.

CITY OF RAYMORE, MISSOURI
 DEMOGRAPHIC AND ECONOMIC STATISTICS
 LAST TEN FISCAL YEARS

102

Fiscal Year	(1) Population	(1) Personal Income	(1) Per Capita Personal Income	(1) Median Age	(4) Percentage of Over 25 Population with Formal Education Beyond High School	(2) Public Primary School Enrollment	(3) Unemployment Rate
2008	17,703	62,135	22,496	35.6	57.3	5,798	4.9
2009	18,125	73,825	29,474	37.2	57.3	5,875	7.8
2010	19,206	70,334	28,242	37.0	59.6	5,910	8.2
2011	19,206	78,778	28,060	36.5	68.9	5,907	7.2
2012	19,318	74,512	29,890	36.1	68.4	6,009	5.7
2013	19,550	73,864	29,753	36.1	66.9	5,975	5.7
2014	19,754	72,042	30,560	38.0	67.1	5,998	4.7
2015	19,963	72,042	30,560	38.0	67.1	5,998	4.7
2016	20,374	72,380	30,422	36.5	68.3	5,927	3.4
2017	20,839	74,293	31,821	36.5	72.9	6,039	3.3

Data Sources:

- 1 U.S. Census Bureau - QuickFacts - Dated Jan. 14
- 2 Raymore-Peculiar School District
- 3 Missouri Department of Economic Development
- 4 U.S. Census Bureau - American FactFinder - Dated Jan. 14

CITY OF RAYMORE, MISSOURI
 PRINCIPAL EMPLOYERS
 CURRENT YEAR AND TEN YEARS AGO

Employer	2017			2008		
	Employees	Rank	Percentage of Total City Employment	Employees	Rank	Percentage of Total City Employment
Wal-Mart	343	1	2.23	400	2	4.96
Raymore-Peculiar School District **	338	2	2.20	833	1	10.34
Foxwood Springs	326	3	2.12	290	3	3.60
Sam's Club	200	4	1.30			
Cosentino's Price Chopper	160	5	1.04	170	4	2.11
Lowe's Home Improvement	130	6	0.85	120	5	1.49
Rehabilitation Center of Raymore	120	7	0.78	120	6	1.49
City of Raymore	103	8	0.67	107	7	1.33
McDonald's	45	9	0.29			
Benton House of Raymore	40	10	0.26			
Ryan's Steakhouse				75	8	0.93
Community Bank of Raymore				50	9	0.62
South Metro Fire District				50	10	0.62
Totals	<u>1,805</u>		<u>11.76</u>	<u>2,215</u>		<u>27.49</u>
Total estimated workforce over age of 16	<u>15,347</u>			<u>8,058</u>		

Source: Raymore's Department of Finance - contacted businesses for information

**Raymore-Peculiar School District - Number of employees for the entire district is 809; the number of employees employed within the City of Raymore is 357 - contacted human resource department for the school district.

CITY OF RAYMORE, MISSOURI
 FULL-TIME EQUIVALENT CITY GOVERNMENT EMPLOYEES
 BY FUNCTIONS/PROGRAM
 LAST TEN FISCAL YEARS

Function	Fiscal Year									
	2008	2009	2010	2011	2012	2013	2014	2015	2016	2017
General Government										
Administration	5.50	5.50	6.00	6.00	6.00	6.00	6.00	8.00	6.00	6.00
Information Technology	2.00	2.00	2.00	2.00	2.00	2.00	2.00	2.00	2.00	2.00
Economic Development	2.00	2.00	2.00	2.00	2.00	2.00	2.00	1.00	1.00	1.00
Community Development	8.00	8.00	6.50	6.50	6.50	6.50	6.50	6.00	7.00	7.00
Finance	6.00	6.00	5.00	5.00	5.00	5.00	5.00	5.00	5.00	5.00
Communications									2.00	2.00
Public Safety										
Municipal Court	1.50	1.50	1.50	1.50	1.65	1.60	1.73	1.73	2.10	2.10
Law Enforcement	39.50	39.50	39.50	39.50	42.50	43.50	43.30	43.30	43.50	43.50
Emergency Management	1.00	1.00	1.00	1.00	1.00	1.00	1.20	1.20	1.00	1.00
Public Works										
Engineering	4.45	4.45	4.45	4.45	4.45	4.45	4.45	3.97	3.97	3.97
Streets	3.12	3.12	3.12	3.12	3.12	3.12	3.12	3.46	3.46	3.61
Storm Water	2.92	2.92	2.92	2.92	2.92	2.92	2.92	3.25	3.25	3.40
Buildings and Grounds	2.20	2.20	2.20	2.20	2.20	2.30	2.30	2.15	2.15	2.15
Water	5.75	5.75	5.75	5.75	5.75	5.75	5.75	6.09	6.09	6.44
Sewer	5.75	5.75	5.75	5.75	5.75	5.75	5.75	6.09	6.09	6.44
Parks and Recreation										
Parks	3.75	5.15	5.15	5.15	6.00	6.20	6.20	5.82	5.82	5.82
Recreation	4.05	2.65	2.65	2.65	2.80	3.00	3.00	3.68	3.68	3.68
Total	97.49	97.49	95.49	95.49	99.64	101.09	101.22	102.74	104.11	105.11

Source: Annual budget

CITY OF RAYMORE, MISSOURI
OPERATING INDICATORS BY FUNCTION
LAST TEN FISCAL YEARS

Function	Fiscal Year									
	2008	2009	2010	2011	2012	2013	2014	2015	2016	2017
Development										
Building permits issued	652	675	678	678	1,284	889	990	1,151	1,510	1,340
Inspections completed	3,150	3,032	3,223	3,223	4,288	3,822	4,988	4,704	6,148	6,925
Code enforcement complaints	364	434	410	410	318	296	252	275	492	728
Code enforcement cases	352	435	425	425	372	302	219	229	424	523
Development plans reviewed	286	352	251	251	252	288	269	261	534	267
Police										
911 calls taken	8,137	8,454	8,114	8,114	8,350	9,133	8,810	9,836	10,439	10,081
Arrests made	832	1,014	925	925	996	1,211	965	661	747	842
Citations issued	2,467	1,956	2,508	2,508	3,062	4,770	2,631	2,363	3,308	2,407
Animal control cases	463	487	344	344	352	353	349	380	403	587
Streets and highways										
Street resurfacing (sq yds)	37,985	159,058	106,958	106,958	115,731	121,229	3,025	15,477	39,980	189,763
Street reconstruction (sq yds)	44,653	4,000	12,855	12,855	1,588	32,590	33,678			8,560
Street micro/cip seal (sq yds)								46,743	73,947	66,385
New roads (sq yds)	56,336	57,952			6,461	8,775	8,433	9,898	14,740	6,640
Potholes repaired (sq yds)		3,686	2,100	2,100	1,095	662	350	693	699	
Trail reconstruction (sq yds)								2,261	5,737	
Street Fog Seal (sq yds)										101,780
Property										
Buildings maintained (sq ft)	63,632	63,632	67,132	67,162	67,132	69,532	69,532	69,532	69,532	69,532
Land (acres)	285	285	285	285	285	285	285	285	285	285
Recreation										
Recreation programs offered	50	45	93	93	165	164	159	148	156	168
Recreation programs' participation	3,381	3,913	3,800	3,800	3,700	4,086	4,387	4,616	4,449	4,523
Special events	13	13	14	14	12	12	12	11	13	
Shelter rentals	97	102	110	110	121	114	161	159	116	207
Park house rentals	110	116	116	116	205	237	380	304	269	95
Theme park tickets sold	102	111	92	92	169	123	122	74	141	76
Ballfield Rentals (Tournaments)							5	7	9	11
Centerview Rentals										32
Centerview Internal Bookings										72

CITY OF RAYMORE, MISSOURI
OPERATING INDICATORS BY FUNCTION
LAST TEN FISCAL YEARS

Function	Fiscal Year									
	2008	2009	2010	2011	2012	2013	2014	2015	2016	2017
Court										
Completed court cases	3,534	2,785	3,148	3,148	2,986	4,206	4,177	3,365	3,179	2,655
Water										
New connections	34	60	68	68	54	82	98	96	179	197
Line breaks repaired	7	6	7	7	10	6	11	10	11	12
Meters replaced	512	157	269	269	311	374	378	344	108	664
Replaced pipe (lf)	n/a	n/a	n/a	n/a	n/a	n/a	n/a	300	4,335	176
Sewer										
New residential connections	87	63	66	66	58	84	93	116	213	220
New commercial connections	32	n/a	2	2	5	4	1	2	2	6
Line breaks repaired	2	n/a	n/a	n/a	n/a	n/a	n/a	n/a	1	n/a
Replaced/lined pipe (lf)	n/a	n/a	n/a	n/a	n/a	n/a	n/a	5,036	6,228	n/a
Storm Water										
Storm sewer replaced (lf)	n/a	n/a	n/a	n/a	n/a	n/a	n/a	382	n/a	n/a

n/a - Information is not available.
Source: City Department Heads

CITY OF RAYMORE, MISSOURI
CAPITAL ASSET STATISTICS BY FUNCTION
LAST TEN YEARS

Function	Fiscal Year									
	2008	2009	2010	2011	2012	2013	2014	2015	2016	2017
Public safety										
Stations	1	1	1	1	1	1	1	1	1	1
Patrol units	9	9	9	9	10	10	10	10	10	10
Highways and streets										
Streets (miles)	121.4	121.4	123.1	123.1	123.6	124.2	124.8	125.5	126.4	126.9
*Streetlights	1,253	1,262	1,288	1,293	1,364	1,364	1,364	1,364	1,496	1,546
Culture and recreation										
Parks acreage - developed	202.01	202.01	205.89	205.89	205.89	205.89	205.89	205.89	205.9	208.1
Parks acreage - undeveloped	83	83	79	79	79	79	79	79	79	77
Parks - developed	5	6	7	7	7	8	8	8	8	9
Parks - undeveloped	2	2	1	1	1	1	1	1	1	1
Multi-purpose trails (miles)	10.4	10.4	10.0	10.0	10.0	10.0	10.0	10.0	10.0	10.0
Tennis courts	6	6	6	6	6	6	6	6	6	6
Baseball fields	8	10	8	8	8	8	8	8	8	8
Picnic tables	48	48	48	48	48	49	49	49	49	55
Playgrounds	3	3	3	4	6	7	7	7	7	7
Volleyball courts	2	2	2	2	2	2	2	2	2	2
Basketball courts	3	3	3	3	3	3	3	3	3	3
Football/soccer fields	6	7	7	7	7	7	7	7	12	12
Shelter house	4	4	4	4	4	4	4	4	4	4
Skate parks	1	1	1	1	1	1	1	1	1	1
Primitive campgrounds	1	1	1	1	1	1	1	1	1	1
Event Centers										1
Water										
Water mains (miles)	103.5	103.5	103.9	103.9	104.4	105.6	106.1	106.8	107.6	108.1
Fire hydrants	910	921	921	921	930	942	948	957	969	978
Sewer										
Storm sewers (miles)	49.9	50.5	53.9	54.0	54.5	54.9	55.4	56.0	56.4	56.8
Sanitary sewers (miles)	100.9	101.9	102.2	102.2	102.5	102.5	103.0	103.1	103.7	104.1

*The City purchased all streetlights in FY16



**DANA F. COLE
& COMPANY^{LLP}**
CERTIFIED PUBLIC ACCOUNTANTS

INDEPENDENT AUDITORS' REPORT ON INTERNAL CONTROL OVER
FINANCIAL REPORTING AND ON COMPLIANCE AND OTHER MATTERS
BASED ON AN AUDIT OF FINANCIAL STATEMENTS PERFORMED IN
ACCORDANCE WITH GOVERNMENT AUDITING STANDARDS

To the Honorable Mayor and
Members of the City Council
City of Raymore, Missouri

We have audited, in accordance with the auditing standards generally accepted in the United States of America and the standards applicable to financial audits contained in *Government Auditing Standards* issued by the Comptroller General of the United States, the financial statements of the City of Raymore, Missouri, which comprise the governmental activities, the business-type activities, the aggregate discretely presented component units, each major fund, and the aggregate remaining fund information as of and for the year ended October 31, 2017, and have issued our report thereon dated February 16, 2018.

Internal Control Over Financial Reporting

In planning and performing our audit, we considered the City of Raymore, Missouri's internal control over financial reporting (internal control) to determine the audit procedures that are appropriate in the circumstances for the purpose of expressing our opinions on the financial statements, but not for the purpose of expressing an opinion on the effectiveness of the City's internal control. Accordingly, we do not express an opinion on the effectiveness of the City's internal control.

A *deficiency in internal control* exists when the design or operation of a control does not allow management or employees, in the normal course of performing their assigned functions, to prevent, or detect and correct, misstatements on a timely basis. A *material weakness* is a deficiency, or a combination of deficiencies, in internal control such that there is a reasonable possibility that a material misstatement of the entity's financial statements will not be prevented, or detected and corrected, on a timely basis. A *significant deficiency* is a deficiency, or a combination of deficiencies, in internal control that is less severe than a material weakness, yet important enough to merit attention by those charged with governance.

Our consideration of internal control was for the limited purpose described in the first paragraph of this section and was not designed to identify all deficiencies in internal control over financial reporting that might be material weaknesses or significant deficiencies. Given these limitations, during our audit we did not identify any deficiencies in internal control that we consider to be material weaknesses. However, material weaknesses may exist that have not been identified. We identified a certain deficiency in internal control, described in the accompanying schedule of findings and responses, that we consider to be a significant deficiency as item 2017-001.

Compliance and Other Matters

As part of obtaining reasonable assurance about whether the City of Raymore, Missouri's financial statements are free of material misstatement, we performed tests of its compliance with certain provisions of laws, regulations, contracts, and grants, noncompliance with which could have a direct and material effect on the determination of financial statement amounts. However, providing an opinion on compliance with those provisions was not an objective of our audit, and accordingly, we do not express such an opinion. The results of our tests disclosed no instances of noncompliance that are required to be reported under *Government Auditing Standards*.

City of Raymore, Missouri's Response to Findings

The City of Raymore, Missouri's response to the findings identified in our audit is described in the accompanying schedule of findings and responses. We did not audit the City of Raymore, Missouri's response, and accordingly, we express no opinion on it.

Purpose of this Report

The purpose of this report is solely to describe the scope of our testing of internal control and compliance and the results of that testing, and not to provide an opinion on the effectiveness of the entity's internal control or on compliance. This report is an integral part of an audit performed in accordance with *Government Auditing Standards* in considering the entity's internal control and compliance. Accordingly, this communication is not suitable for any other purpose.

Dana J Cole + Company, LLP

Overland Park, Kansas
February 16, 2018

CITY OF RAYMORE, MISSOURI
SCHEDULE OF FINDINGS AND RESPONSES
YEAR ENDED OCTOBER 31, 2017

2017-001 CONTROL OVER THE FINANCIAL REPORTING PROCESS

Criteria

As described in our engagement letter, management is responsible for establishing and maintaining internal controls, including monitoring, and for the fair presentation of financial statements, including the notes to the financial statements, in conformity with accounting principles generally accepted in the United States of America.

Condition and Context

Management should possess the ability to prepare the entire financial statement package in accordance with accounting principles generally accepted in the United States of America. This requires that management possess the ability to prepare the entire financial statement package, including related disclosures and supplemental information without the assistance from the auditors. The auditors drafted the financial statement section related to the government-wide statements and a portion of the related note disclosures from a trial balance and other documentation provided by City personnel.

Cause

City personnel do not obtain the expertise necessary to draft the entire year-end financial statements including the notes to the financial statements.

Potential Effect

The potential exists that a material misstatement of the financial statements could occur and not be prevented or detected by the City's internal control.

Recommendation

We recommend that the City review and approve the adequacy of financial statement disclosures prepared by the auditors and apply analytic procedures to the draft financial statements to ensure that all assets and liabilities of the City are recorded, among other procedures as considered necessary by management.

Views of Responsible Officials and Corrective Action Plan

The City relies on the auditor to prepare the government-wide financial statements including the related note disclosures. The City reviews such financial statements and approves all adjustments. The City also uses analytic procedures among other procedures necessary to complete the Management Discussion and Analysis. City personnel have drafted the fund financial statements, majority of note disclosures, budgetary comparison schedules, and other supplemental information.

CITY OF RAYMORE, MISSOURI
SUMMARY SCHEDULE OF PRIOR AUDIT FINDINGS
YEAR ENDED OCTOBER 31, 2017

2016-001 CONTROL OVER THE FINANCIAL REPORTING PROCESS

Management should possess the ability to prepare financial statements in accordance with accounting principles generally accepted in the United States of America. The preparation of financial statements under this basis of accounting requires that management possess the ability to prepare the financial statements and related disclosures without the assistance from the auditors. We recommended that the City review and approve the adequacy of financial statement disclosures prepared by the auditors and apply analytic procedures to the draft financial statements to ensure that all assets and liabilities of the City are recorded, among other procedures as considered necessary by management. This is a similar finding as noted in the Schedule of Findings and Responses as item 2017-001 for the year ending October 31, 2017.