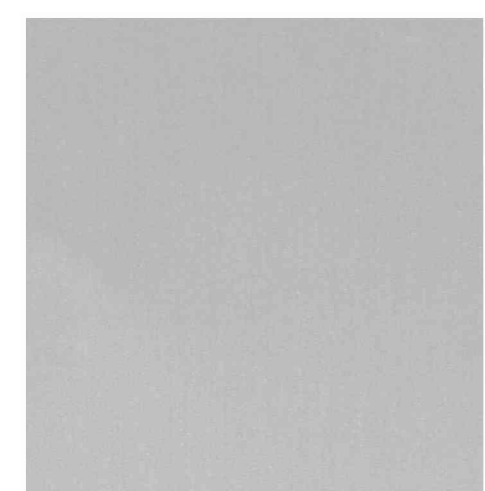


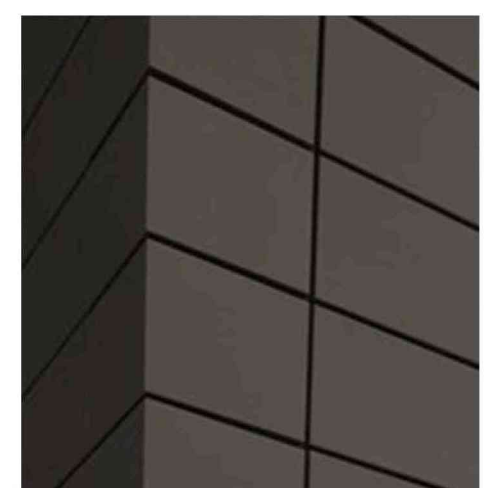
concrete panels  
(Nichiha industrial block panels)



limestone veneer  
(stacked bond, Indiana Limestone smooth finish)



storefront  
(clear anodized finish)



metal panels  
(with concealed fasteners, charcoal brown)



brick veneer  
(tan, stacked bond)

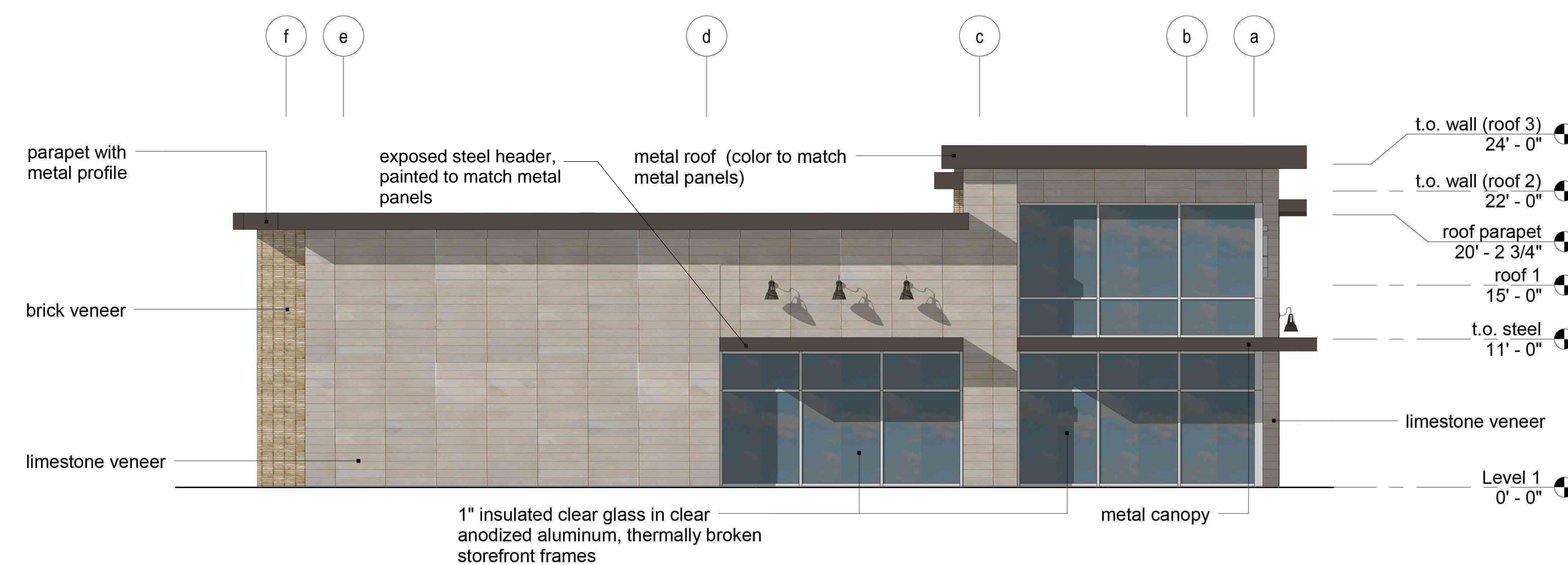


wood plank infill  
(at soffits framed by steel)

**exterior materials legend**

**exterior materials and finishes**

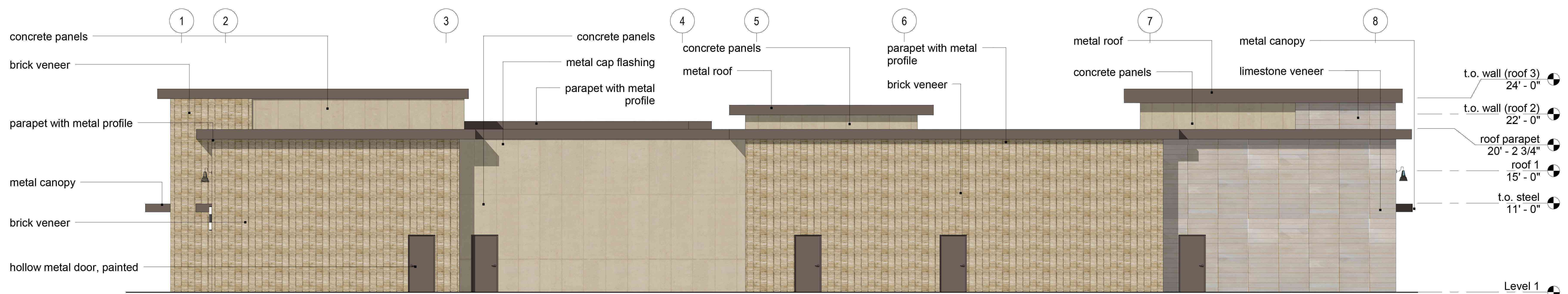
- limestone veneer - Indiana limestone, smooth finish, stacked course
- brick veneer - tan brick veneer, stacked course
- grout/mortar - color TBD
- glass - clear 1" insulated, Low-E coating with argon fill
- flashing - pre-finished metal, color to match metal panels
- roof materials - white TPO
- standing seam metal roof with metal fascia panels, color to match metal panels
- standing seam metal canopy with metal fascia panels, color to match metal panels
- metal panel - dry joint system with concealed fasteners, gray
- exterior paint - hollow metal doors - coat with acrylic low luster exterior paint, color to match metal panels
- steel - color to match metal panels



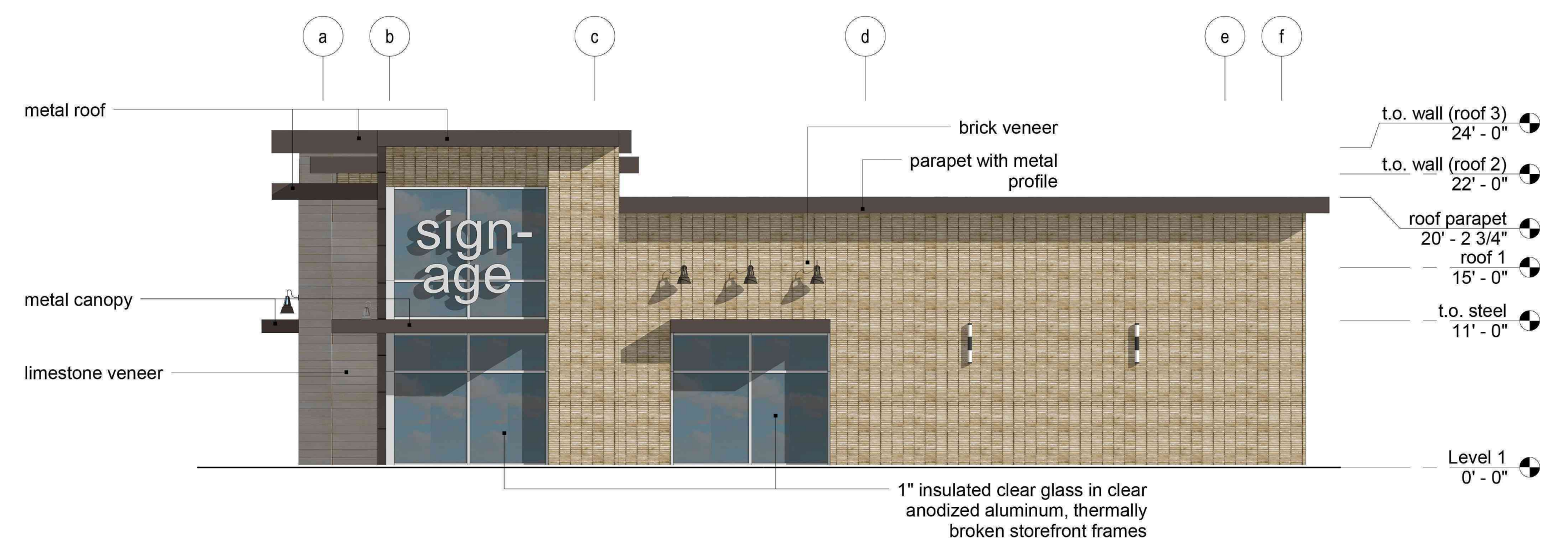
**1 East**  
scale: 1/8" = 1'-0"



**2 North**  
scale: 1/8" = 1'-0"



**3 South**  
scale: 1/8" = 1'-0"



**4 West**  
scale: 1/8" = 1'-0"

a new development for  
**Cadence**  
Kansas City, Missouri

date  
05.06.16  
drawn by  
DAE  
checked by  
DAE  
revisions

**NOT FOR CONSTRUCTION**

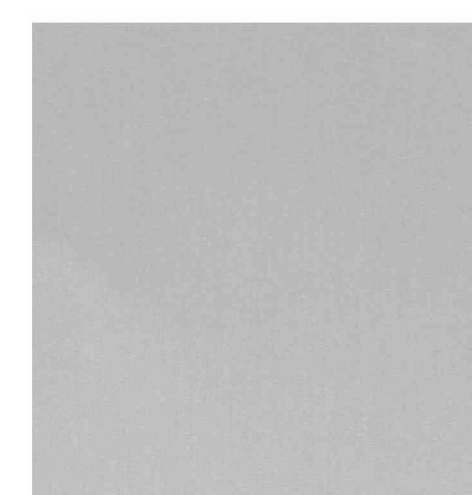
sheet number  
**A3.1**  
drawing type  
PUD  
project number  
15103



wood slat art screen, per tenant



limestone veneer  
(stacked bond, Indiana Limestone  
smooth finish)



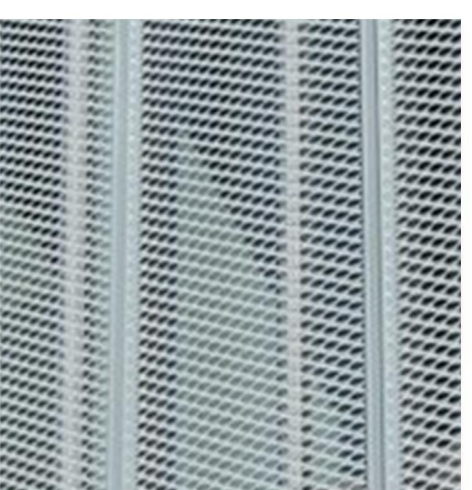
storefront  
(clear anodized finish)



metal panels 1  
(with concealed fasteners,  
charcoal brown)



brick veneer 1  
(tan, stacked bond)

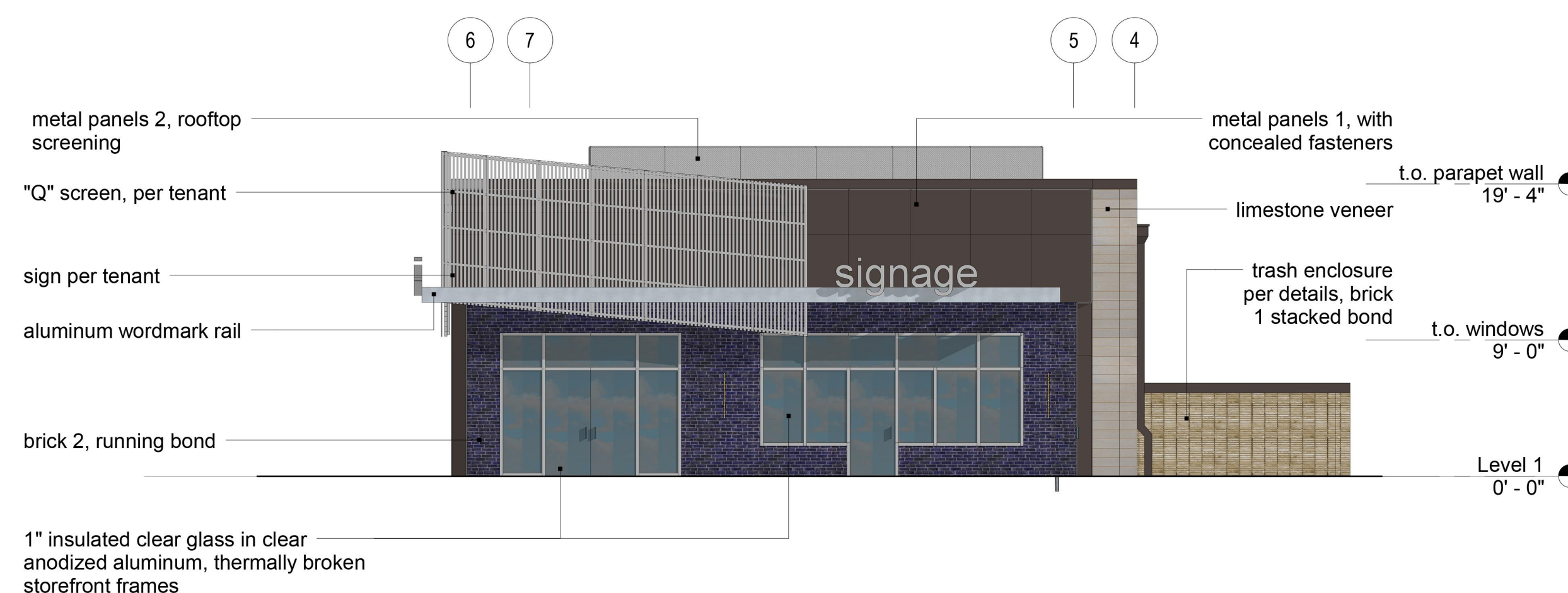
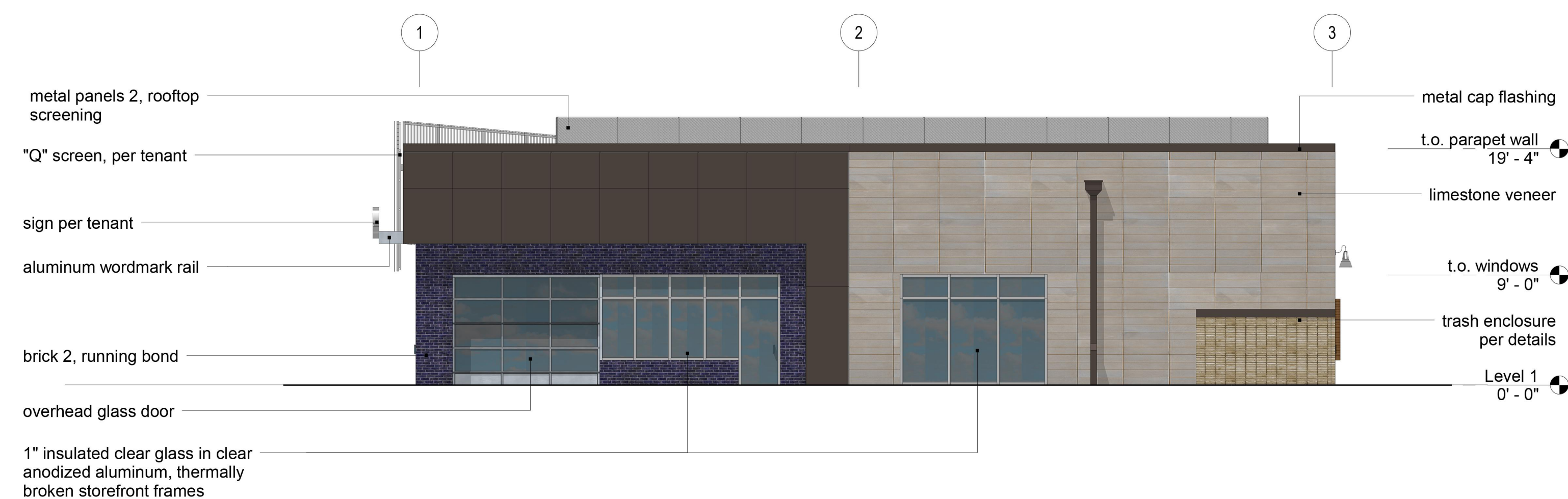
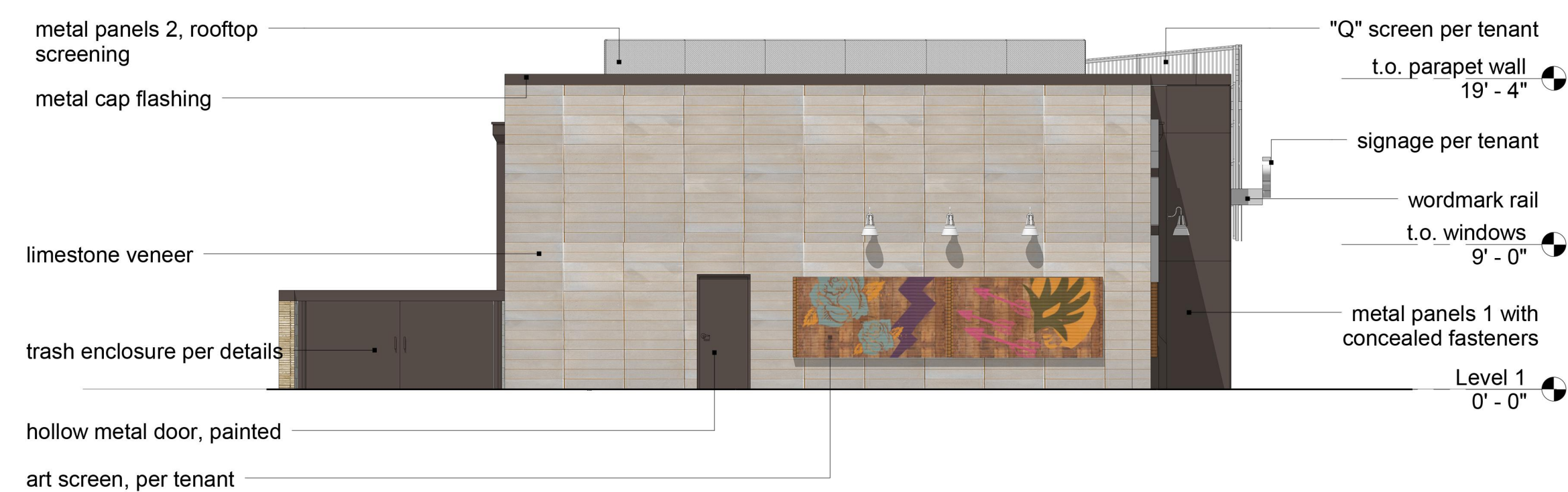


aluminum "Q" screen,  
per tenant

**exterior materials legend**

**exterior materials and finishes**

- limestone veneer - Indiana limestone, smooth finish, stacked course
- brick veneer -
  - brick 1 - tan brick veneer, stacked course
  - brick 2 - color aubergine, glossy finish, running bond
- grout/mortar - color TBD
- glass - clear 1" insulated, Low-E coating with argon fill
- flashing - pre-finished metal, color to match metal panel 1
- roof materials -
  - white TPO
  - aluminum workmark rail
- metal panel -
  - metal panel 1 - dry joint system with concealed fasteners, charcoal brown
  - metal panel 2 - dry joint system with concealed fasteners, aluminum, natural
- exterior paint -
  - hollow metal doors - coat with acrylic low luster exterior paint, color to match adjacent wall color
  - steel - color to match metal panels
- "Q" screen - aluminum framing with 2x2 aluminum slats per tenant's specifications
- art panel -
  - art panel 1 - pressure treated lumber wood slats, stained padre brown with wood frame



a new multi-tenant building for  
**Cadence**  
Kansas City, Missouri

date  
05.06.16  
drawn by  
bcm  
checked by  
Checker  
revisions

NOT FOR CONSTRUCTION

sheet number  
**A3.2**  
drawing type  
schematic  
project number  
15103