



# City of Raymore

**100 Municipal Circle · Raymore, MO. 64083**

**Phone · 816-892-3045 · Fax · 816-892-3093**

## **ADDENDUM NO. 1**

### Municipal Circle Lighting Project #17-272-501

All plan holders are hereby notified and agree by signature below, that the bid includes consideration of the following changes, amendments, and/or clarifications and costs associated with these changes and are included in the bid.

#### **Addendum No. 1 - Proposal Due Date Change & Clarification of Questions**

1. Proposal receipt date has been changed until July 28, 2017 at 10:00 a.m. to allow more time for questions, comments or suggestions.
2. Quantities on the bid tab have been revised to reflect replacing the 6 poles on Skyline and Broadmoor, relocating 9 of the existing acorn style lights to the outer perimeter and installing 12 new arm style lights on the inside perimeter of Municipal Circle. See Revised Bid Proposal Form E. (attached)
3. Line item on the bid tab has been added for a Type 1 12"x12"x12" junction box. See Revised Bid Proposal Form E (attached).
4. There are six lights on Skyline and Broadmoor (the section between Municipal Circle and Johnston Dr) that are to be replaced with new arm-style lights. Not eight as was stated in the scope of work. The six poles are mounted on concrete bases that will have to be modified to accept the new poles.
5. The screw-in bases are to be Hubbell Power Systems Street light Foundations (see attachment), not MoDoT approved bases as the scope of work called for. The Hubbell bases were recommended by the pole manufacturer.
6. Notice to Proceed will be issued after the contractor has taken delivery of the poles and fixtures.
7. Clarification on pole height - The new arm style poles are to be 16 feet in height
8. Clarification on power supply - Power to the existing lights is metered and located on the east side of City Hall. Power for new lights is to be sourced at this location.
9. Pre-Bid Attendees:
  - RS Electric Utility Services
  - Allegiant Group, Inc.
  - Capital ElectricLine Builders

**REVISED**  
**BID PROPOSAL FORM E – Project No. 17-272-501**

**Municipal Lighting 2017**  
**Bid**

Bid Items	Units	Estimated Quantities	\$/Units	Total
Mobilization, Bonds and Insurance	Lump Sum	1		
Pole Relocation	each	9		
Type 1, 12"x12"x12" junction box	each	1		
New, Arm-style street lights	each	18		
Concrete Base Modification	each	6		
1.5" HDPE - SCH 40 - Grey	Lin Ft	1300		
Screw-in Helix Pole Foundation	Each	9		
½" x 10' Ground Rod at Pole	Each	9		
2" PVC Conduit - KCPL Power	LF	85		
2C#2 & 1C#4 Aluminum URD Cable	LF	1300		
1C#10 THHN - P&B Cable (ground to pole)	LF	360		
1C#8 Pole Ground Wire	LF	90		
URD Cable - KCPL	LF	100		
Buchanan 20 U	Each	9		
Buchanan 65 U	Each	18		
Fargos	Each	27		
5 AMP fuse	Each	18		

**Total Bid for Project Number: 17-272-501**

\$ \_\_\_\_\_

**In blank above insert numbers for the sum of the bid.**

(\$ \_\_\_\_\_)

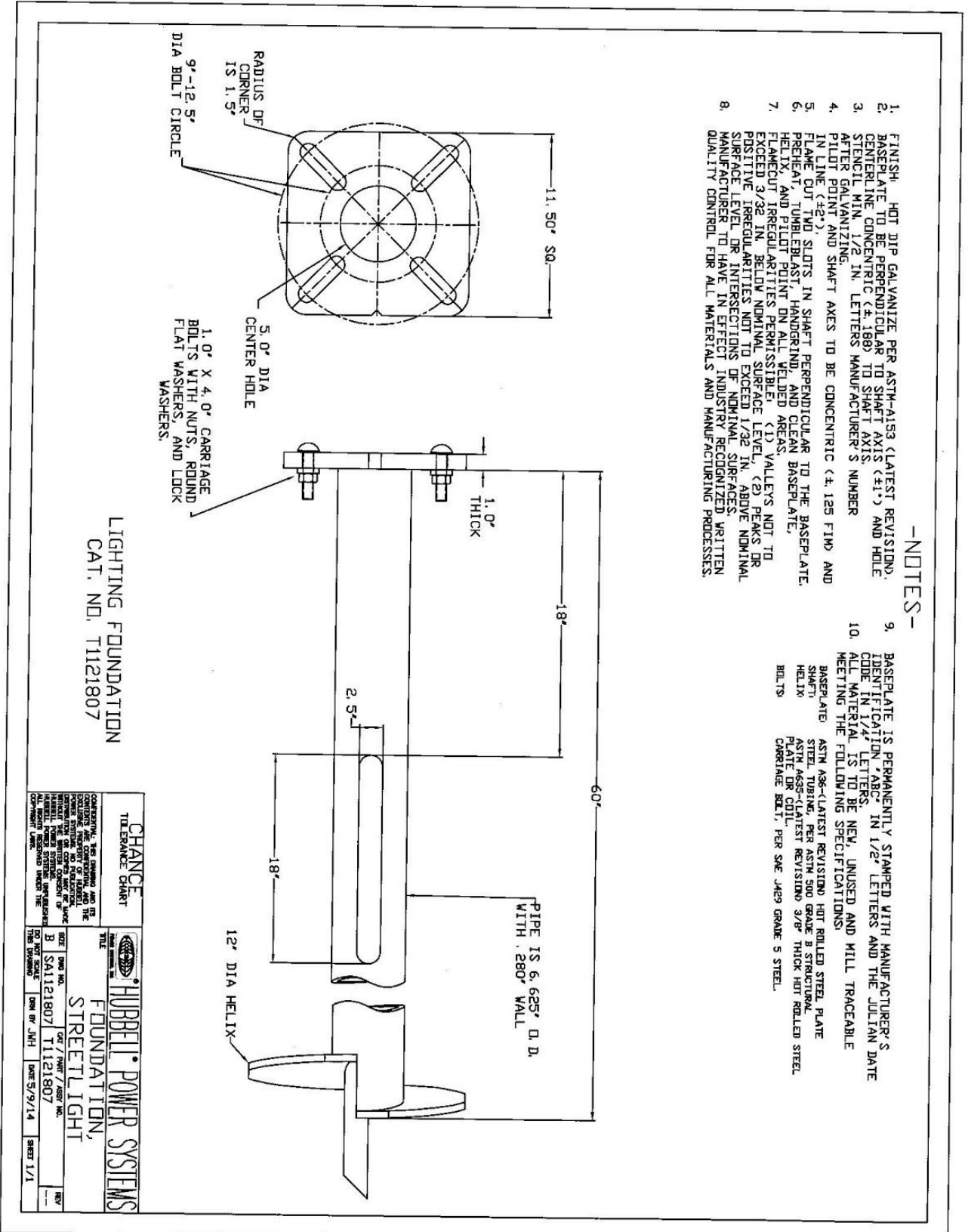
**In blank above write out the sum of the bid.**

**BID OF:** \_\_\_\_\_

**(Firm Name)**

# ATTACHMENT

## Hubbell Power Systems Street light Foundation Screw in Bases



- NOTES-**
1. FINISH: HOT DIP GALVANIZE PER ASTM-A153 (LATEST REVISION).
  2. BASEPLATE TO BE PERPENDICULAR TO SHAFT AXIS ( $\pm 1^\circ$ ) AND HOLE CENTERLINE CONCENTRIC ( $\pm .188$ ) TO SHAFT AXIS.
  3. STENCIL MIN. 1/2 IN. LETTERS MANUFACTURER'S NUMBER AFTER GALVANIZING.
  4. PILOT POINT AND SHAFT AXES TO BE CONCENTRIC ( $\pm .125$  FIMD AND IN LINE ( $\pm 2^\circ$ )).
  5. FLAME CUT TWO SLOTS IN SHAFT PERPENDICULAR TO THE BASEPLATE.
  6. PREHEAT, TUMBLEBLAST, HANDGRIND, AND CLEAN BASEPLATE, HELIX, AND PILOT POINT ON ALL WELDED AREAS.
  7. FLAMECUT IRREGULARITIES PERMISSIBLE: (1) VALLEYS NOT TO EXCEED 3/32 IN. BELOW NOMINAL SURFACE LEVEL; (2) PEAKS OR POSITIVE IRREGULARITIES NOT TO EXCEED 1/32 IN. ABOVE NOMINAL SURFACE LEVEL OR INTERSECTIONS OF NOMINAL SURFACES.
  8. MANUFACTURER TO HAVE IN EFFECT INDUSTRY RECOGNIZED WRITTEN QUALITY CONTROL FOR ALL MATERIALS AND MANUFACTURING PROCESSES.

9. BASEPLATE IS PERMANENTLY STAMPED WITH MANUFACTURER'S IDENTIFICATION 'ABC' IN 1/2" LETTERS AND THE JULIAN DATE CODE IN 1/4" LETTERS.
10. ALL MATERIAL IS TO BE NEW, UNUSED AND MILL TRACEABLE MEETING THE FOLLOWING SPECIFICATIONS:
  - BASEPLATE: ASTM A56-(LATEST REVISION) HOT ROLLED STEEL PLATE
  - SHAFT: STEEL TUBING, PER ASTM 500 GRADE B STRUCTURAL
  - HELIX: PIPE, PER ASTM A133 (LATEST REVISION) 3/8" THICK HOT ROLLED STEEL
  - PILOT POINT: PER SAE J429 GRADE 5 STEEL
  - CARRIAGE BELT: PER SAE J429 GRADE 5 STEEL.

LIGHTING FOUNDATION  
CAT. NO. T1121807

CHANCE TOLERANCE CHART		<b>HUBBELL POWER SYSTEMS</b> FOUNDATION, STREET LIGHT	
COMMENTS: THE DRAWING AND ITS DIMENSIONS ARE TO BE CONSIDERED THE FINAL AUTHORITY FOR FABRICATING THE PARTS. THE DRAWING CONFORMS TO THE MATERIAL SPECIFICATIONS AND DIMENSIONS LISTED THEREIN. THE DRAWING CONFORMS TO THE DIMENSIONS LISTED THEREIN. THE DRAWING CONFORMS TO THE DIMENSIONS LISTED THEREIN.	TITLE: FOUNDATION, STREET LIGHT	DESIGNED BY: JMH DATE: 5/9/14	SHEET: 1/1

Any other questions regarding this proposal shall be submitted to Kim Quade, CPPB by email at kquade@raymore.com or by phone at (816) 892-3045. There will be no questions allowed after July 24, 2017 at 5 p.m.

I hereby certify that the above have been considered and associated costs have been included in this bid.

Company Name: \_\_\_\_\_

By: \_\_\_\_\_

Title: \_\_\_\_\_

Address: \_\_\_\_\_

City, State, Zip: \_\_\_\_\_

Date: \_\_\_\_\_ Phone: \_\_\_\_\_

Signature of Bidder: \_\_\_\_\_

**ADDENDUM MUST BE SUBMITTED WITH BID**