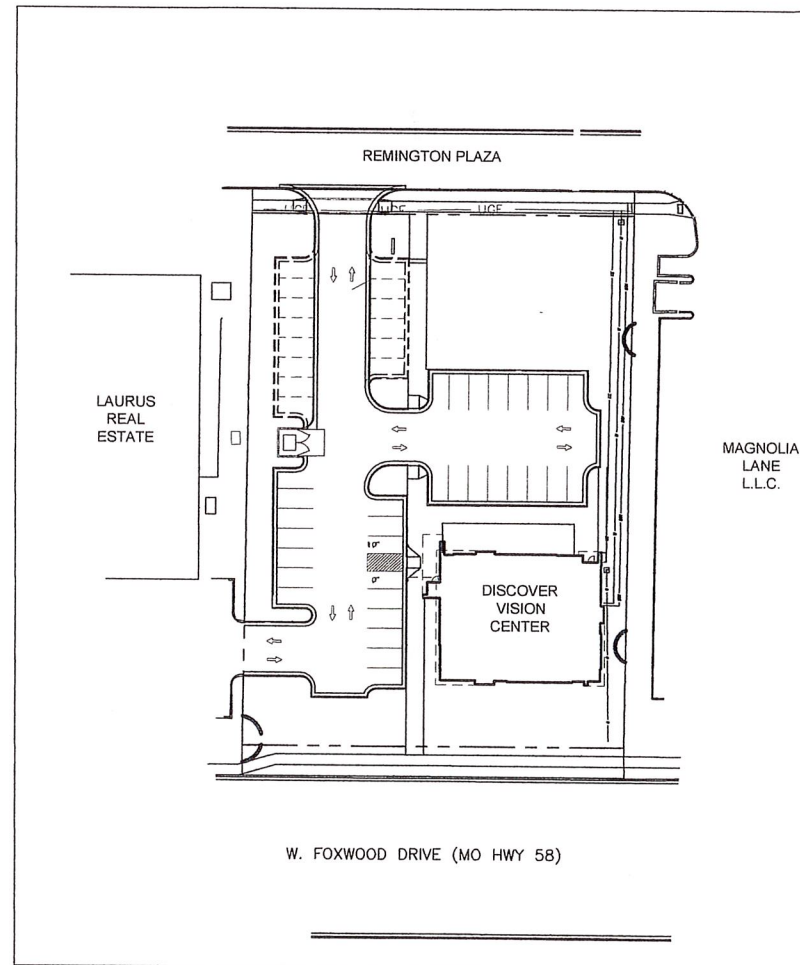


SITE PLAN REVIEW

16 JUNE 2017
7 JULY 2017 (REVISED)

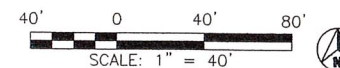


RAYMORE, MISSOURI



REFERENCE SITE PLAN

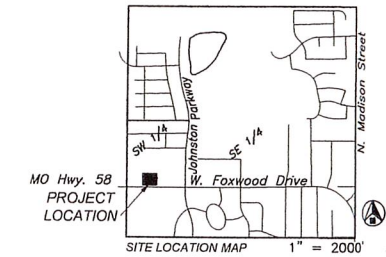
SCALE: 1" = 40'



SCALE: 1" = 40'



VICINITY LOCATION MAP



SEC. 9-46-32
RAYMORE, CASS COUNTY, MISSOURI

STANDARDS

- THE CITY OF RAYMORE PUBLIC IMPROVEMENT CONSTRUCTION STANDARDS
- KANSAS CITY METRO MATERIALS BOARD SPECIFICATIONS FOR CONCRETE WORK
- AMERICAN PUBLIC WORKS ASSOCIATION - KANSAS CITY METROPOLITAN (APWA)

GENERAL NOTES

1. ALL CONSTRUCTION SHALL CONFORM TO CITY OF RAYMORE, MISSOURI'S MUNICIPAL CODE AND THE GENERAL TECHNICAL SPECIFICATIONS FOR PRIVATELY FUNDED PUBLIC INFRASTRUCTURE IN EFFECT ON THE APPROVAL DATE NOTED ON THESE PLANS AND INCORPORATED HEREIN BY REFERENCE.
2. THE CONTRACTOR SHALL PROVIDE EVIDENCE THAT THEIR INSURANCE MEETS THE REQUIREMENTS OF THE CITY OF RAYMORE, MISSOURI.
3. ALL TRAFFIC CONTROL SHALL BE IN CONFORMANCE WITH THE UNIFORM TRAFFIC CONTROL DEVICES FOR THE CITY OF RAYMORE, MISSOURI TRAFFIC CONTROL HANDBOOK FOR STREET MAINTENANCE AND CONSTRUCTION OPERATIONS. COORDINATE WITH THE CITY OF RAYMORE, MO FOR ALL TRAFFIC CONTROL REQUIREMENTS.
4. THE CONTRACTOR OR THEIR CONCRETE SUPPLIER SHALL, AT THE CONTRACTOR'S EXPENSE, SUBMIT A CONCRETE MIX DESIGN FOR ANNUAL APPROVAL BY THE KANSAS CITY METRO MATERIALS BOARD (KCMMB) PRIOR TO PLACEMENT OF CONCRETE IN THE PUBLIC STREET RIGHT OF WAY. ADDITIONAL INFORMATION REGARDING KCMMB APPROVED CONCRETE MIX DESIGNS IS AVAILABLE AT WWW.KCMMB.ORG. ALL CONCRETE MIX DESIGN SHALL BE KCMMB4K.
5. THE CONTRACTOR IS RESPONSIBLE FOR THE PROTECTION OF ALL PROPERTY CORNERS AND SECTION CORNERS. ANY PROPERTY CORNERS AND/OR SECTION CORNERS DISTURBED OR DAMAGED BY CONSTRUCTION ACTIVITIES SHALL BE RESET BY A REGISTERED LAND SURVEYOR LICENSED IN THE STATE OF MISSOURI, AT THE CONTRACTOR'S EXPENSE.
6. THE CONTRACTOR SHALL BE RESPONSIBLE FOR THE RESTORATION OF THE RIGHT-OF-WAY AND FOR DAMAGED IMPROVEMENTS SUCH AS CURBS, DRIVEWAYS, SIDEWALKS, STREET LIGHT AND TRAFFIC SIGNAL JUNCTION BOXES, TRAFFIC SIGNAL LOOP LEAD INS, SIGNAL POLES, IRRIGATION SYSTEMS, ETC. DAMAGED IMPROVEMENTS SHALL BE REPAIRED IN CONFORMANCE WITH THE LATEST CITY STANDARDS AND TO THE CITY OF RAYMORE'S SATISFACTION.
7. LOCAL TRAFFIC WILL BE CARRIED THROUGH CONSTRUCTION.
8. CONTRACTOR SHALL COORDINATE ADJUSTMENTS AND RELOCATIONS WITH UTILITY COMPANIES.
9. THIS DESIGN SPECIFICALLY PREPARED FOR USE AT THE LOCATION SHOWN. USE IN ANY OTHER MANNER EXCEEDS THE INTENDED PURPOSE OF THESE DRAWINGS AND ANY ACCOMPANYING SPECIFICATIONS.
10. THE CONTRACTOR SHALL COMPLY WITH STATE LAW REQUIRING ANY PERSON OR FIRM DOING EXCAVATION ON THE PUBLIC RIGHT-OF-WAY DO SO ONLY AFTER GIVING NOTICE TO AND OBTAINING INFORMATION FROM UTILITY COMPANIES.
11. EXCAVATION FOR UTILITY WORK IN THE PUBLIC STREET RIGHT-OF-WAY REQUIRES A RIGHT-OF-WAY WORK PERMIT FROM THE PUBLIC WORKS DEPARTMENT, IN ADDITION TO OTHER PERMITS.
12. THE CONTRACTOR SHALL SOD ALL DISTURBED AREAS WITHIN THE PUBLIC STREET RIGHT-OF-WAY UNLESS NOTED OTHERWISE ON THE PLANS. OR IF SPECIFIC WRITTEN APPROVAL IS PROVIDED BY THE CITY.
13. ROCK REMOVAL SHALL BE SUBSIDIARY.
14. THE CONTRACTOR SHALL COORDINATE WITH THE CITY FOR THE LOCATION OF A CONSTRUCTION ENTRANCE, STAGING AREA, AND CONCRETE WASHOUT AREAS.

SHEET INDEX:

- COVER SHEET
- CIVIL**
- C100 SITE PLAN
 - C200 GRADING, DRAINAGE & STORM SEWER PLAN
 - C300 UTILITY PLAN/SANITARY SEWER PLAN
 - C400 EROSION CONTROL PLAN

LANDSCAPE

- L100 LANDSCAPE PLAN

ARCHITECTURAL

- A1 BUILDING ELEVATIONS

SITE ELECTRICAL

- PH1 PHOTOMETRIC PLAN

Civil Engineer:

UHL ENGINEERING, INC.
4121 W. 83rd Street, Suite 156
Shawnee Mission, Kansas
(913) 385-2670
www.uhlengineering.com

Architect:

G² Guy Gronberg Architects, P.C.
113 SE 3rd St.
Lee's Summit, MO 64063
(816)524-0878
www.guygronberg.com

MEP ENGINEER:

BC BC Engineers, Inc.
5720 Reeder
Shawnee, KS 66203
(913)262-1772
www.bcengineer.com

Owner:



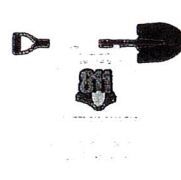
Discover Vision Centers
4801 Cliff Avenue - Suite 100
Independence, MO 64055
(816)350-4537
www.discovervision.com

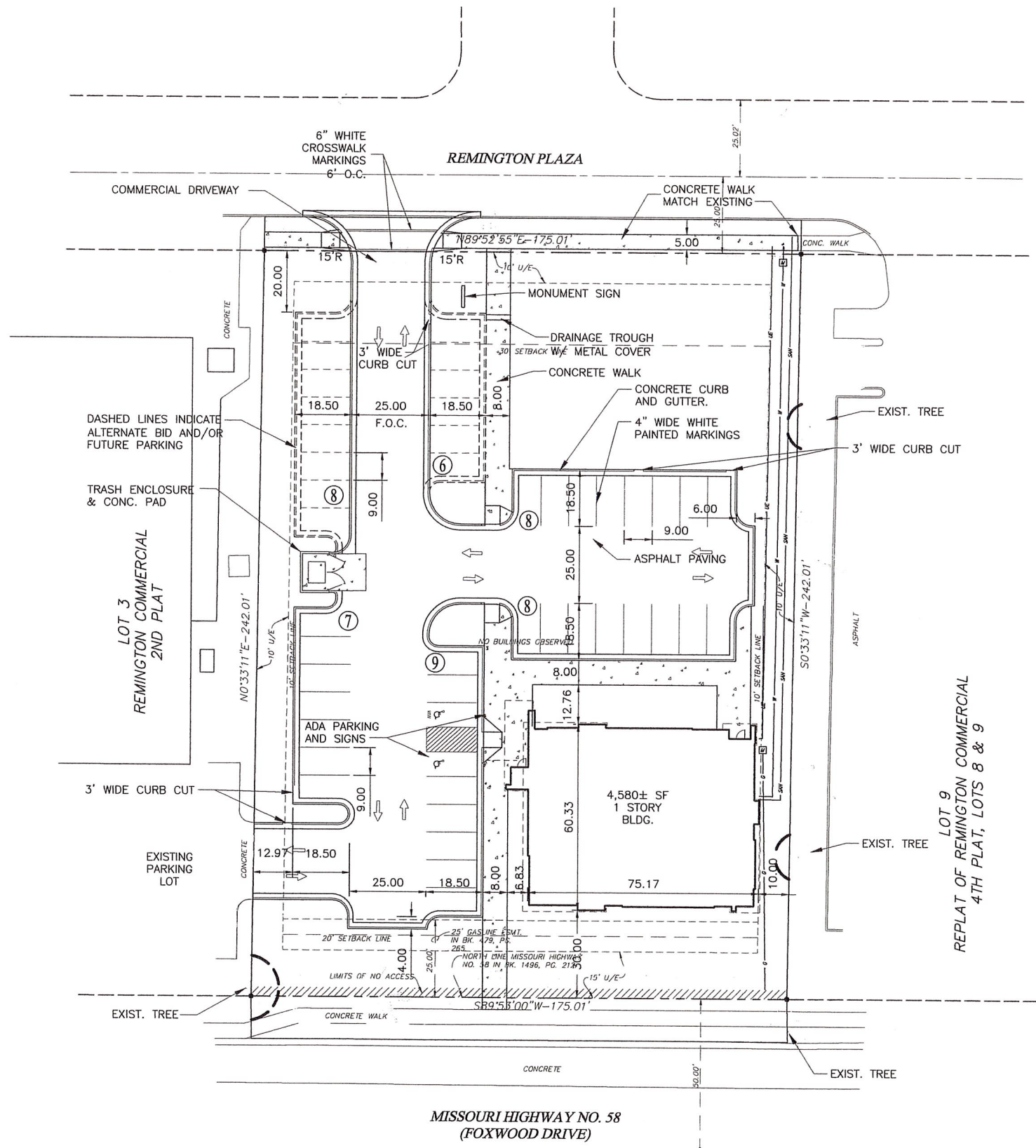
LEGAL / LAND DESCRIPTION:

Lot 8, REPLAT OF REMINGTON COMMERCIAL 4TH PLAT, LOTS 8 AND 9, a subdivision in Raymore, Cass County, Missouri, according to the recorded plat thereof, filed in Plat Book 18 at Page 81 and in Plat Book 22 at Page 19.

BENCHMARK:

ELEVATION = 1105.86
SET SQUARE CUT ON TOP OF CONCRETE LIGHT POLE BASE, ±100'
SOUTH OF AND ±10' EAST OF THE NORTHEAST CORNER OF LOT 8.





SITE PLAN:
SCALE: 1" = 20'-0"

ZONING:
C-3 (INCLUDING ALL SURROUNDING AREAS)

DEVELOPMENT DATA:
LAND AREA = 42,352 SF (0.97 ACRES)

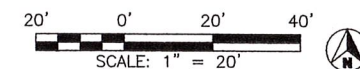
PROPOSED BUILDING USE:
MEDICAL CLINIC

BUILDING COVERAGE:
4,580 SF = 10.8% OF LOT

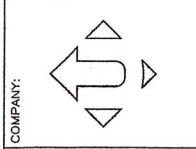
PARKING REQUIRED:
1 SPACE PER 600 SF
4,580/600 = 8 SPACES REQUIRED

PARKING PROVIDED:
32 SPACES
+14 ALTERNATE SPACES
=46 TOTAL SPACES
(INCLUDES 2 ADA SPACES - ONE TO BE VAN ACCESSIBLE)

ALL DIMENSION ARE TO THE BACK OF CURB (B.O.C.) UNLESS NOTED OTHERWISE



UHL ENGINEERING, INC.
4121 W. 89th Street, Suite 156
Prairie Village, Kansas
(913) 385-2870
www.uhlengineering.com



DISCOVER VISION CENTER
1018 W. Foxwood Drive
RAYMORE, MISSOURI

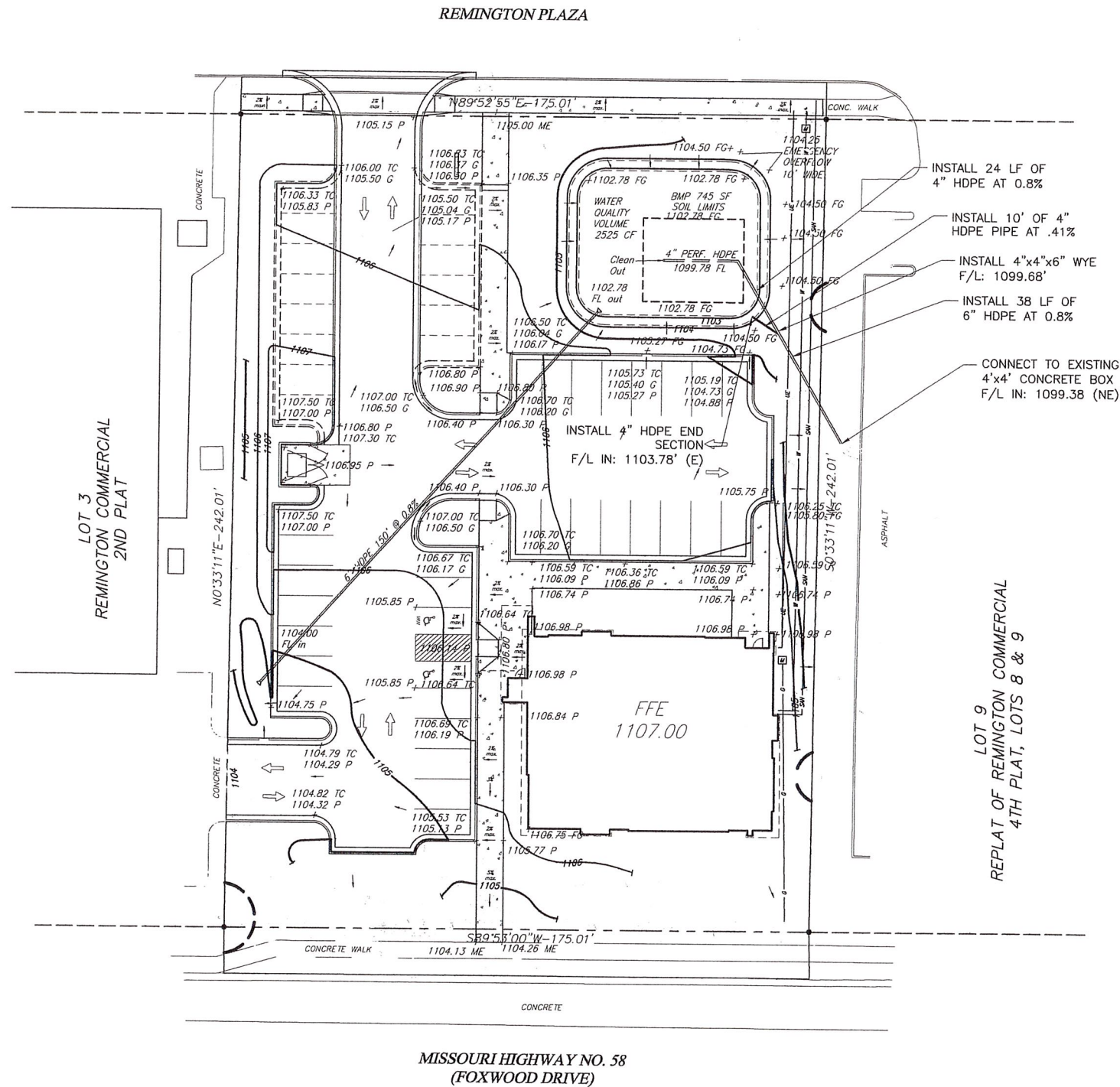
Discover Vision Center
ATTN: Mike Wyrick
4801 Cliff Ave.
Independence, Missouri 66208
(816) 350-4537

OWNER:	PROJECT:	COMPANY:	PROFESSIONAL SEAL:
Discover Vision Center	Discover Vision Center	UHL ENGINEERING, INC.	Terry S. Ward

ISSUE DATE:	DESIGNED BY:	DRAWN BY:	CHECKED BY:	SHEET NAME:
16 JUNE 2017	TSU	DCC	TSU	SITE PLAN

ISSUE DATE:	DESIGNED BY:	DRAWN BY:	CHECKED BY:	SHEET NAME:
16 JUNE 2017	TSU	DCC	TSU	SITE PLAN

SHEET NUMBER:
C100



GRADING, DRAINAGE & STORM SEWER PLAN

GRADING PLAN:
SCALE: 1" = 20'-0"

UCS n:

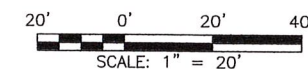
GRADING LEGEND

- 97.00 SPOT ELEVATION
- TC TOP OF CURB
- P PAVEMENT
- G GUTTER

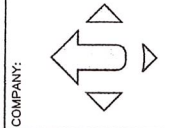
NOTES:

1. CONTOUR INTERVAL IS 1 FOOT. ALL ELEVATIONS SHOWN ARE IN FEET.
2. ANY EXCESS EXCAVATION SHALL BE REMOVED FROM THE SITE AND DISPOSED OF PROPERLY.

DISTURBED AREA:
TOTAL DISTURBED AREA = 0.86 AC



UHL ENGINEERING, INC.
4121 W. 83rd Street, Suite 156
Prairie Village, Kansas
(913) 385-2670
www.uhlengineering.com



DISCOVER VISION CENTER
1018 W. Foxwood Drive
RAYMORE, MISSOURI

OWNER:
Discover Vision Center
ATTN: Mike Wyrick
4801 Cliff Ave.
Independence, Missouri 66208
(816) 350-4537

DATE:
7 JULY 2017

CITY REVIEW COMMENTS	REVISION/DESCRIPTION

ISSUE DATE: 16 JUNE 2017
DESIGNED BY: TSU
DRAWN BY: DCC
CHECKED BY: TSU
SHEET NAME:
GRADING, DRAINAGE &
STORM SEWER PLAN
SHEET NUMBER:

C200

UTILITY INFORMATION

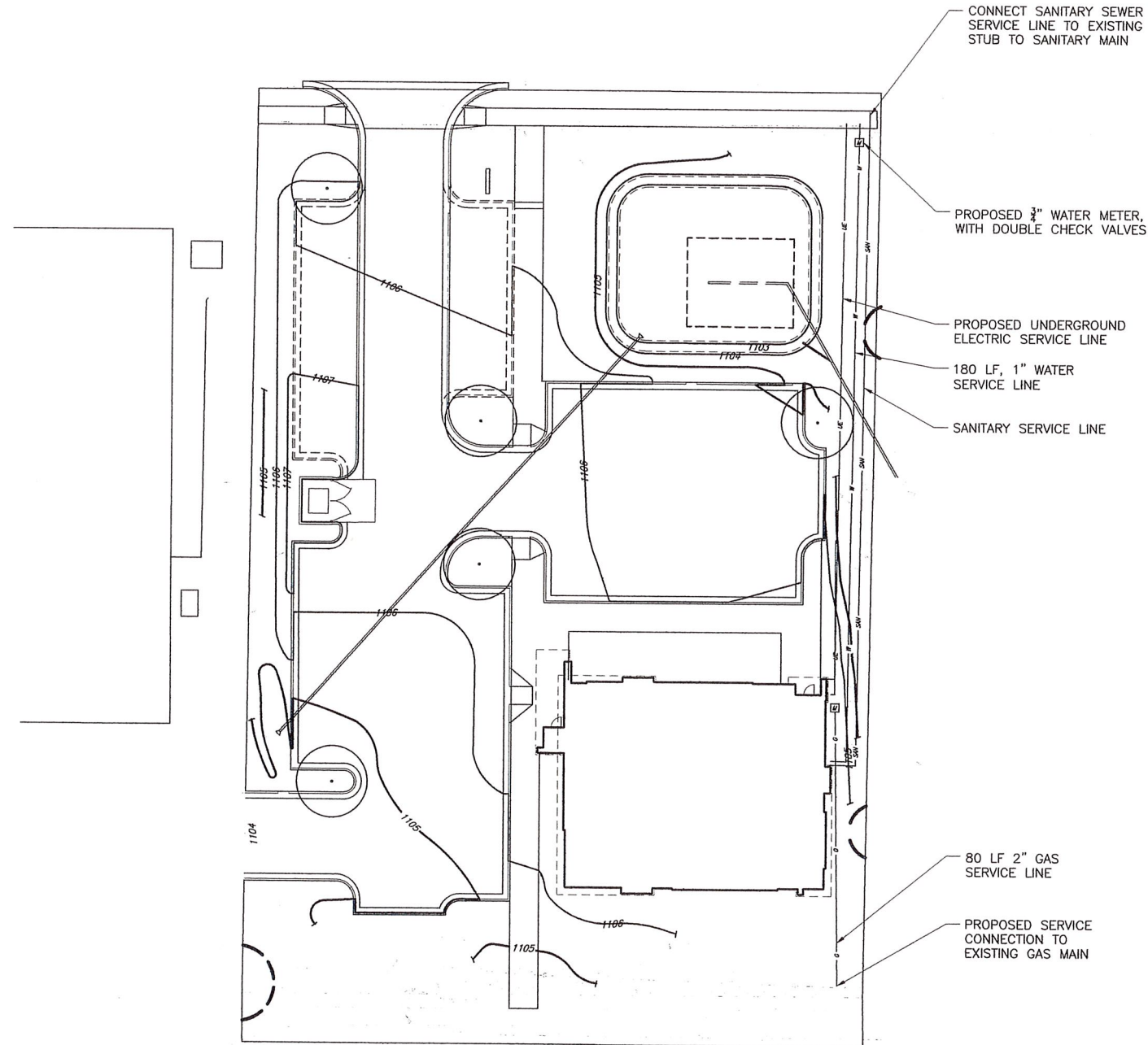
NOTE: 48 HOURS PRIOR TO COMMENCEMENT OF CONSTRUCTION, THE CONTRACTOR SHALL NOTIFY THE FOLLOWING COMPANIES FOR FIELD VERIFICATION OF THE UNDERGROUND UTILITIES.

CITY OF RAYMORE (STREET LIGHTS, ETC.)	816-331-5182
CITY OF RAYMORE WATER/SEWER	816-331-5182
U.S. TELECOM (FIBER OPTICS)	1-800-521-0579
AT&T CABLE HAZARD CENTER	1-800-252-1133
VONAGE	1-888-218-9015
COMCAST	816-795-1100
KANSAS CITY POWER & LIGHT CO-ELECT.	816-471-5275
GOOGLE FIBER	866-777-7550
MISSOURI GAS ENERGY / LACLEED	800-582-1234
SOUTHWESTERN BELL TELEPHONE	
CASS COUNTY WASTEWATER	816-380-8134

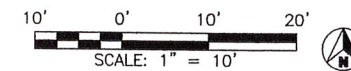
UTILITY NOTES:

VISUAL INDICATIONS OF UTILITIES ARE AS SHOWN. UNDERGROUND LOCATIONS SHOWN, AS FURNISHED BY THEIR LESSORS, ARE APPROXIMATE AND SHOULD BE VERIFIED IN THE FIELD AT TIME OF CONSTRUCTION. FOR ACTUAL FIELD LOCATIONS OF UNDERGROUND UTILITIES, CALL 811 OR 1-800-344-7483 (DIG RITE)

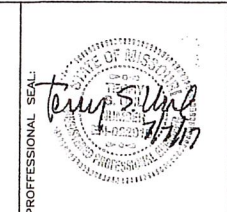
THE CONTRACTOR SHALL ADHERE TO THE PROVISIONS OF THE SENATE BILL NUMBER 583, 78TH GENERAL ASSEMBLY OF THE STATE OF MISSOURI. THE BILL REQUIRES THAT ANY PERSON OR FIRM DOING EXCAVATION ON PUBLIC RIGHT- OF-WAY DO SO ONLY AFTER GIVING NOTICE TO, & OBTAINING INFORMATION FROM, UTILITY COMPANIES. STATE LAW REQUIRES 48 HOURS ADVANCE NOTICE. CALL 1-800-DIG-RITE OR 811.



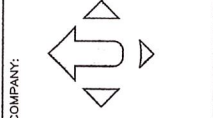
UTILITY/SANITARY SEWER PLAN



UCS 1



UHL ENGINEERING, INC.
 4121 W. 89th Street, Suite 156
 Prairie Village, Kansas
 (913) 385-2670
 www.uhlengineering.com



DISCOVER VISION CENTER
 1018 W. Foxwood Drive
 RAYMORE, MISSOURI

OWNER:
 Discover Vision Center
 ATTN: Mike Wyrick
 4801 Cliff Ave.
 Independence, Missouri 66208
 (816) 350-4537

CITY REVIEW COMMENTS REVISION/DESCRIPTION	DATE
	7 JULY 2017

ISSUE DATE: 16 JUNE 2017
 DESIGNED BY: TSU
 DRAWN BY: DCC
 CHECKED BY: TSU
 SHEET NAME:
 UTILITY/SANITARY SEWER PLAN
 SHEET NUMBER:

C300

SEQUENCE OF EXCAVATION/WORK ACTIVITIES

THE FOLLOWING LIST GENERALLY DESCRIBES THE INTENDED SEQUENCE OF MAJOR ACTIVITIES WHICH DISTURB THE SOILS.

THE ESTIMATED DURATION OF LAND DISTURBANCE IS 120 DAYS.

- MARK CONSTRUCTION LIMITS. CLEAR AND GRUB AREAS REQUIRED FOR PERIMETER EROSION CONTROL AND DEVICES.
- INSTALL PERIMETER EROSION AND SEDIMENT CONTROL ITEMS. EROSION CONTROL SHALL BE INSTALLED PRIOR TO THE BEGRIMING OF SITE WORK.
- INSPECT CONTROL MEASURES PRIOR TO CONSTRUCTION COMMENCEMENT.
- INSTALL STABILIZED CONSTRUCTION ENTRANCE.
- STRIP TOPSOIL AND STOCKPILE. ADD ANY ADDITIONAL RUNOFF PROTECTION.
- PERFORM MASS GRADING.
- INSTALL STABILIZED CONSTRUCTION STAGING AND PARKING, AS REQUIRED.
- INSTALL CONCRETE WASHOUT BASIN.
- STABILIZE AREAS WITH VEGETATION, OR OTHER APPROPRIATE MEANS, THAT WILL BE EXPOSED FOR A PERIOD OF TIME. STABILIZE STEEP SLOPES.
- INSTALL ANY ADDITIONAL CONSTRUCTION EROSION CONTROL ITEMS.
- INSTALL INFRASTRUCTURE IMPROVEMENTS (I.E. UTILITIES, STORM SEWERS, PARKING SURFACE).
- INSPECT PRIOR TO COMMENCEMENT OF BMP CONSTRUCTION.
- PERFORM FINAL GRADING.
- CONSTRUCTION OF STORMWATER BMP'S.
- REMOVE SILT, AS NECESSARY.
- STABILIZE THE REMAINDER OF THE SITE.
- REMOVE EROSION CONTROL DEVICES ONCE GROUND COVER IS ESTABLISHED.

EROSION CONTROL NOTES:

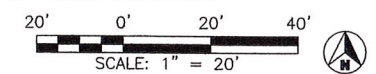
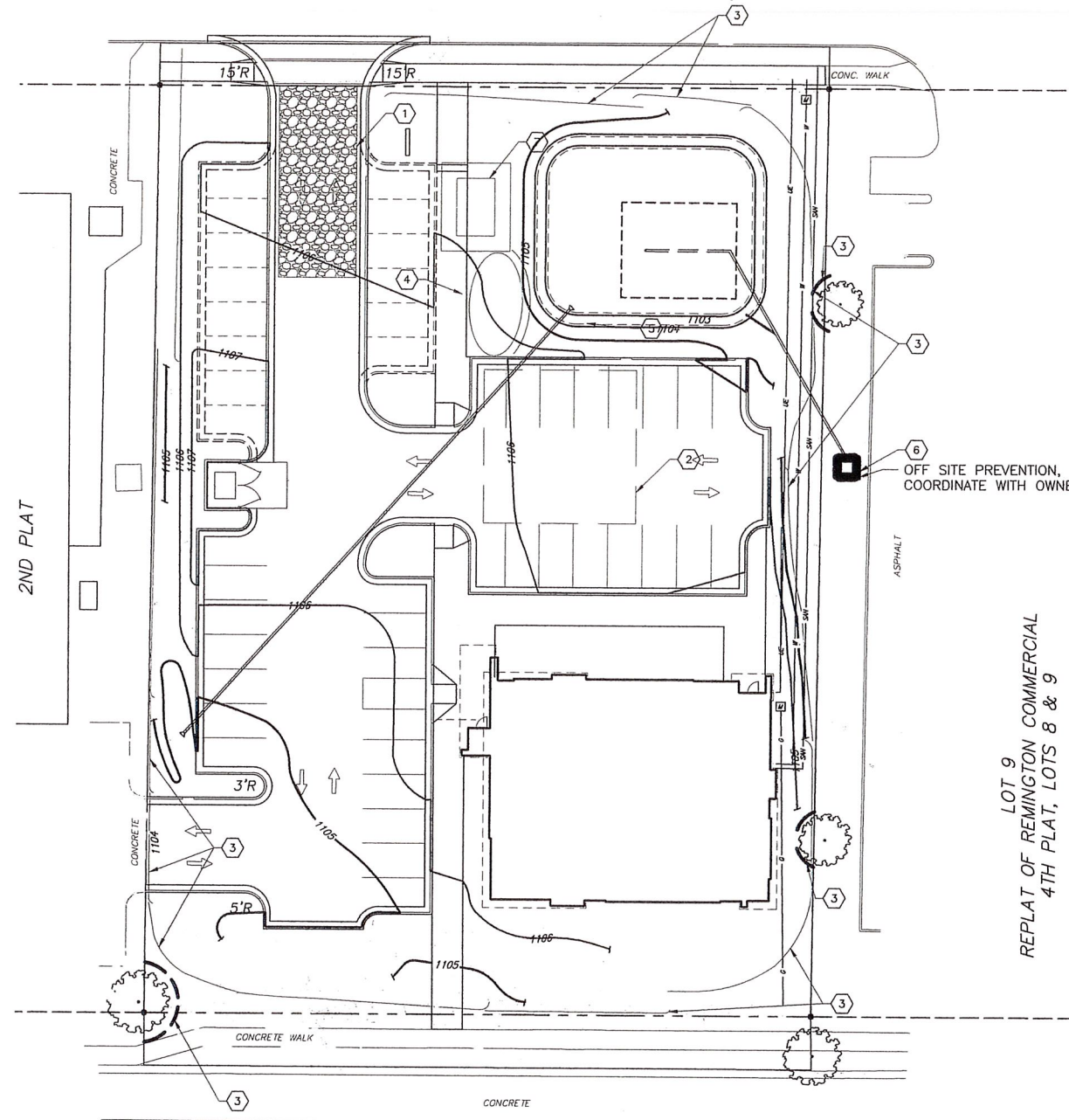
- ALL WORK IN PUBLIC EASEMENTS AND RIGHT-OF-WAY AND ALL EROSION CONTROL WORK MUST COMPLY WITH THE LATEST EDITION OF THE TECHNICAL PROVISIONS AND STANDARD DRAWINGS FOR ROAD AND SEWERS, OF THE CITY OF RAYMORE, MISSOURI IF ANY OF THE GENERAL NOTES CONFLICT WITH THE RAYMORE'S STANDARDS, THE RAYMORE'S STANDARDS SHALL OVERRIDE.
- ALL REQUIREMENTS OF KC APWA SECTION 2150 SHALL BE SATISFIED BOTH DURING CONSTRUCTION AND POST CONSTRUCTION PERIODS.
- THE PROPOSED CONSTRUCTION ENTRY, STOCKPILE AREA AND CONCRETE WASH-OUT PIT SHALL BE IDENTIFIED PRIOR TO BEGINNING WORK.
- THE CONTRACTOR SHALL MAINTAIN EROSION CONTROL DEVICES AND SEDIMENT REMOVAL UNTIL 70% OF PERMANENT VEGETATION HAS BEEN ESTABLISHED AND ESTABLISHED. EROSION CONTROL DEVICES SHALL REMAIN IN PLACE UNTIL THE 70% ESTABLISHED VEGETATION IS MET, OR THE DURATION OF THE PROJECT, WHICHEVER IS THE LATER DATE.
- CONTRACTOR SHALL INSPECT EROSION CONTROL DEVICES EVERY 7 DAYS AND WITHIN 24 HOURS OF A STORM EVENT OF 0.5 INCHES OR MORE. THE CONTRACTOR SHALL REPAIR DAMAGE, CLEAN OUT SEDIMENT, AND ADD ADDITIONAL EROSION CONTROL AS NEEDED, AS SOON AS PRACTICABLE, AFTER INSPECTION.
- PRIOR TO INITIAL SOIL DISTURBANCE OR RE-DISTURBANCE, PERMANENT OR TEMPORARY EROSION CONTROL SHALL BE COMPLETED ON ALL PERIMETER DIKES, SWALES, DITCHES, PERIMETER SLOPES, AND ALL SLOPES GREATER THAN 3 HORIZONTAL TO 1 VERTICAL (3:1); EMBANKMENTS OF PONDS, BASINS, AND TRAPS. SEDIMENT CONTROL SHALL BE COMPLETED WITHIN FOURTEEN (14) CALENDAR DAYS ON ALL DISTURBED OR GRADED AREAS. THE REQUIREMENTS OF THIS SECTION DO NOT APPLY TO THOSE AREAS THAT ARE SHOWN ON THE PLAN AND ARE CURRENTLY BEING USED FOR MATERIAL STORAGE OR FOR THOSE AREAS WHICH ACTUAL CONSTRUCTION ACTIVITIES ARE CURRENTLY BEING PERFORMED.
- THE CONTRACTOR SHALL TEMPORARY SEED, MULCH OR OTHERWISE STABILIZE ANY DISTURBED AREA WHERE LAND DISTURBANCE ACTIVITY HAS CEASED FOR A PERIOD OF FOURTEEN (14) CALENDAR DAYS.
- THE CONTRACTOR SHALL BE RESPONSIBLE FOR PROVIDING ADDITIONAL EROSION CONTROL MEASURES OF MODIFICATIONS IF THE PLAN FAILS TO SUBSTANTIALLY CONTROL EROSION OF OFFSITE SEDIMENTATION.
- GOOD HOUSEKEEPING PRACTICES SHALL BE PERFORMED, INCLUDING SPILL RESPONSE SHALL BE PERFORMED IN ACCORDANCE WITH THE KC APWA STANDARD SPECIFICATIONS, SECTION 2150.
- THE CONTRACTOR SHALL PROVIDE ALL MATERIALS, TOOLS, EQUIPMENT AND LABOR AS NECESSARY TO INSTALL AND MAINTAIN ADEQUATE EROSION CONTROL, KEEP THE STREETS CLEAN OF MUD AND DEBRIS, AND PREVENT SOIL FROM LEAVING THE PROJECT SITE. THE CONTRACTOR'S EROSION CONTROL MEASURES SHALL CONFORM TO THE CITY OF RAYMORE, MISSOURI'S TECHNICAL PROVISIONS SPECIFICATIONS, AND THE PROJECT'S STORMWATER POLLUTION PREVENTION PLAN, A COPY OF WHICH SHALL BE MAINTAINED AND UPDATE ON SITE AT ALL TIMES.

GENERAL INFORMATION

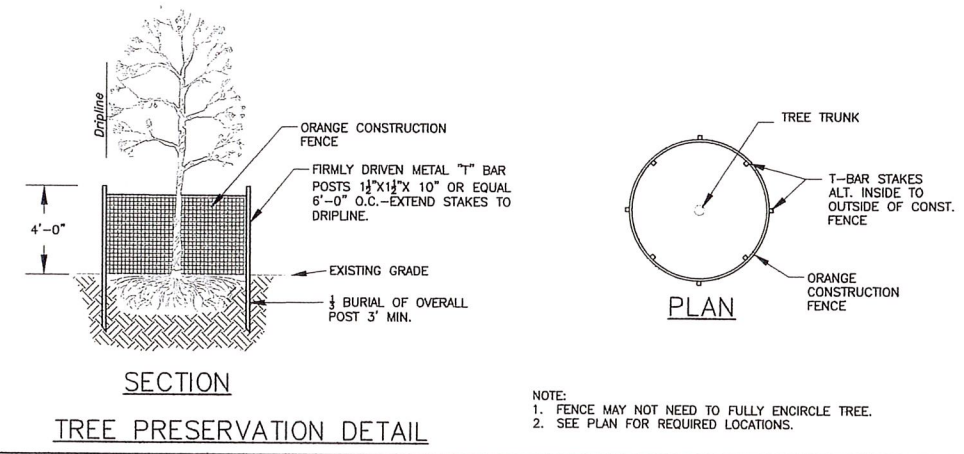
- THE PROPERTY CONSIST OF ARISBURG SILT LOAM. INFORMATION SOURCE: NRCS SOIL SURVEY.
- NO APPARENT WETLANDS EXIST ON SITE.
- NO REGULATORY 100YR FLOOD PLAINS ARE LOCATED ON THE PROPERTY AS DETERMINED BY THE FEMA FLOOD MAP FOR THIS SITE.
- NO STREAM CORRIDORS ARE PRESENT ON THE SITE.
- DISTURBED AREA IS 0.86 ACRES.

CONSTRUCTION NOTES

- PRIOR TO ANY SITWORK EROSION CONTROL MUST BE INSTALLED.
- ALL WORK SHALL BE IN ACCORDANCE WITH APWA SECTION 2150 EROSION AND SEDIMENT CONTROL.
- ALL RADII SHOWN ARE MEASURED A THE BACK OF CURB.



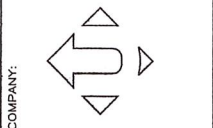
EROSION AND SEDIMENT CONTROL STAGING CHART				
PROJECT STAGE	BMP PLAN REF. NO.	BMP DESCRIPTION	MAYBE REMOVED AFTER STAGE:	NOTES:
A - PRIOR TO LAND DISTURBANCE	1	CONSTRUCTION ENTRANCE	C	
	2	PARKING & STAGING AREA	C	
	3	SILT FENCE & TREE PRESERVATION	D	
	4	STOCKPILE	D	IF NEEDED
	5	SILT FENCE	D	IF STOCKPILE IS NEEDED
B - AFTER GRADING	6	AREA INLET PROTECTION	D	OFFSITE
	7	CONCRETE WASH OUT	D	
C - PRIOR TO PAVING				
D - AFTER CONSTRUCTION COMPLETED AND VEGETATION IS ESTABLISHED	8	SEEDING & MULCHING	D	SEED OR SOD ALL DISTURBED AREA



NOTE:
1. FENCE MAY NOT NEED TO FULLY ENCIRCLE TREE.
2. SEE PLAN FOR REQUIRED LOCATIONS.



UHL ENGINEERING, INC.
4121 W. 89th Street, Suite 156
Prairie Village, Kansas
(913) 385-2670
www.uhlengineering.com



DISCOVER VISION CENTER
1018 W. Foxwood Drive
RAYMORE, MISSOURI

Discover Vision Center
ATTN: Mike Wyrtek
4801 Cliff Ave.
Independence, Missouri 66208
(816) 350-4537

DATE: 7 JULY 2017

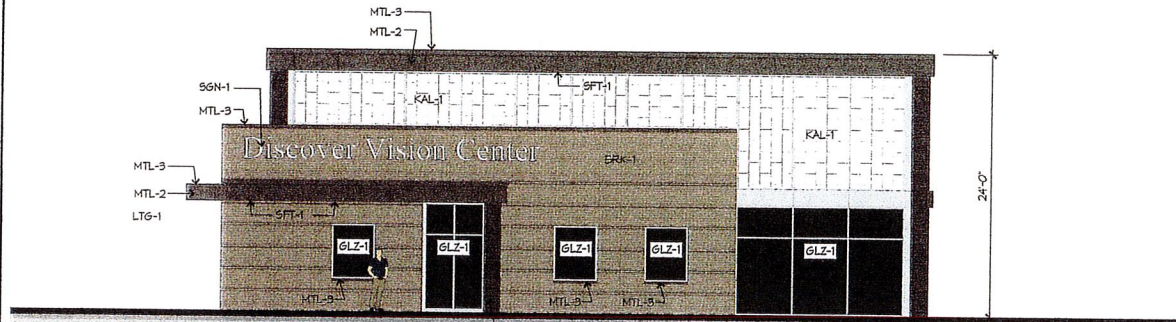
CITY REVIEW COMMENTS REVISION/DESCRIPTION

ISSUE DATE: 16 JUNE 2017
DESIGNED BY: TSU
DRAWN BY: OCC
CHECKED BY: TSU
SHEET NAME: EROSION CONTROL PLAN

SHEET NUMBER: **C400**



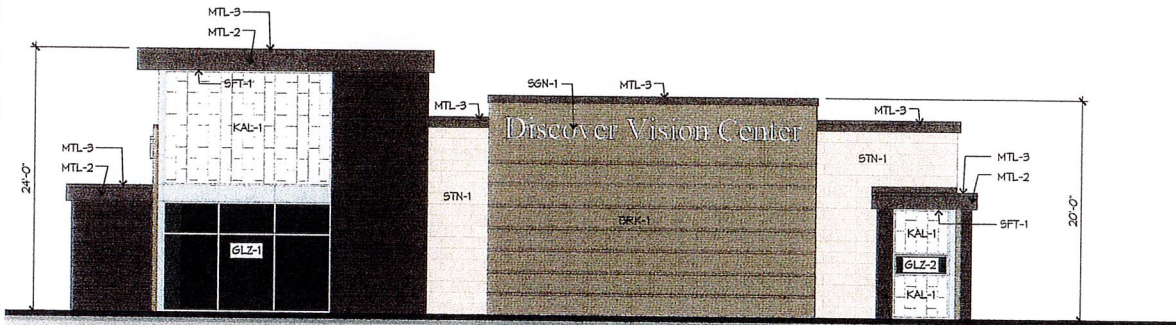
1 WEST RENDERING



2 WEST ELEVATION
1/8"=1'-0"



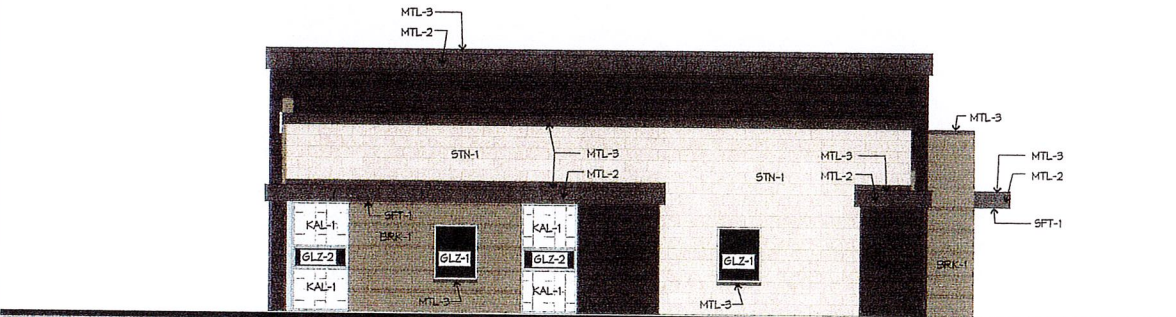
3 SOUTH RENDERING



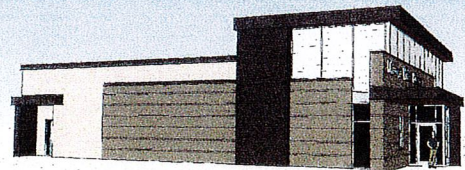
4 SOUTH ELEVATION
1/8"=1'-0"



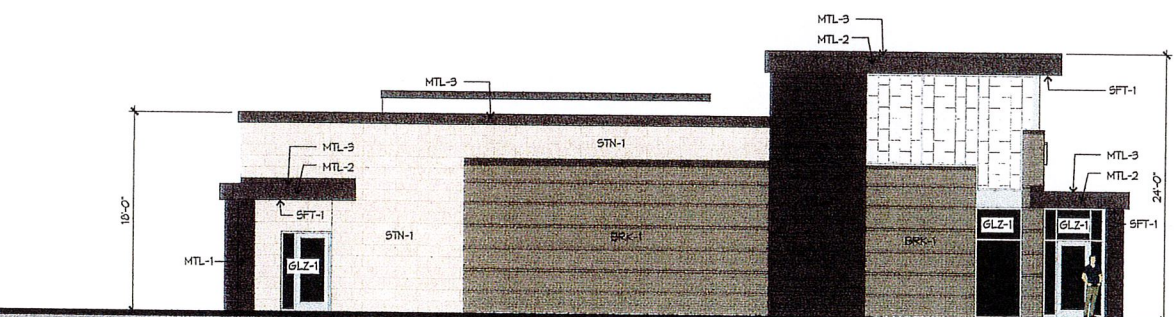
5 EAST RENDERING



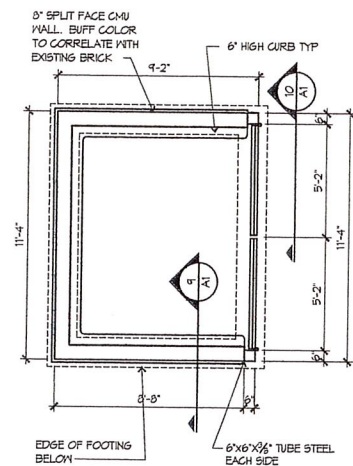
6 EAST ELEVATION
1/8"=1'-0"



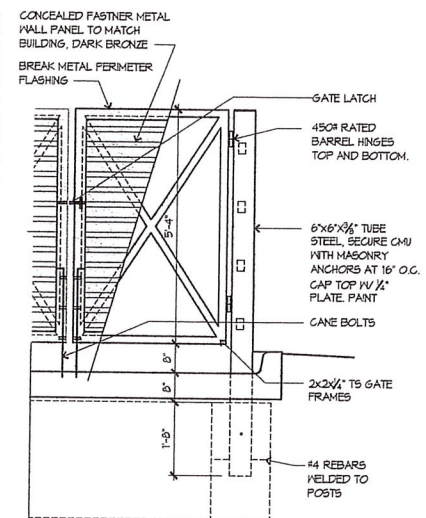
7 NORTH RENDERING



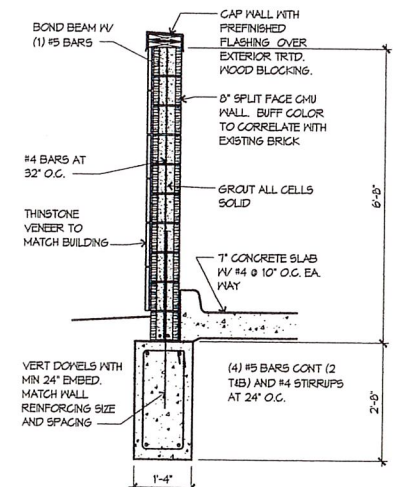
8 NORTH ELEVATION
1/8"=1'-0"



11 TRASH ENCLOSURE
1/4"=1'-0"



9 GATE ELEVATION
1/2"=1'-0"



10 TRASH SECTION
1/2"=1'-0"

EXTERIOR MATERIAL LEGEND

- STN-1 THINSTONE VENEER, 12" x 24" x 1" DP MANUFACTURED THINSTONE VENEER. (COLOR = LIMESTONE)
- BRK-1 MODULAR BRICK VENEER. PROVIDE ONE COURSE OF RECESSED BRICK AT 24" O.C. VERTICAL. (COLOR = DARK BEIGE)
- MTL-1 CONCEALED FASTENER METAL WALL PANEL WITH A DRAMATIC SHADOW LINE CREATED BY HORIZONTAL STRUCTURAL RIBS (COLOR = DARK BROWN) PROVIDE MATCHING PERIMETER TRIMS.
- MTL-2 DRY JOINT FLUSH METAL WALL PANEL (COLOR = DARK BROWN)
- MTL-3 METAL GAP FLASHING (COLOR = DARK BROWN)
- GLZ-1 ALUMINUM STOREFRONT (COLOR = CLEAR ANODIZED) WITH 1" INSULATED GLASS (COLOR = BRONZE TINT)
- GLZ-2 ALUMINUM WINDOW BY KALWALL (COLOR = CLEAR ANODIZED) WITH 1" INSULATED GLASS (COLOR = BRONZE TINT)
- KAL-1 KALWALL SYSTEM (COLOR = WHITE)
- SFT-1 EXPOSED CEDAR AT UNDERSIDE OF SOFFIT. AT ENTRANCE CANOPIES PROVIDE FULLY RECESSED LED CAN LIGHTING IN SOFFIT
- SGN-1 WALL SIGN INDIVIDUAL CHANNEL LIT LETTERS SEGMENTS. TO BE SUBMITTED UNDER SEPERATE SIGN PERMIT



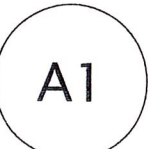
GUY GRONBERG ARCHITECTS, P.C.
119 BE 3RD ST.
LEES SUMMIT, MO 64063
PHONE: 816.524.0370
FAX: 816.524.0370

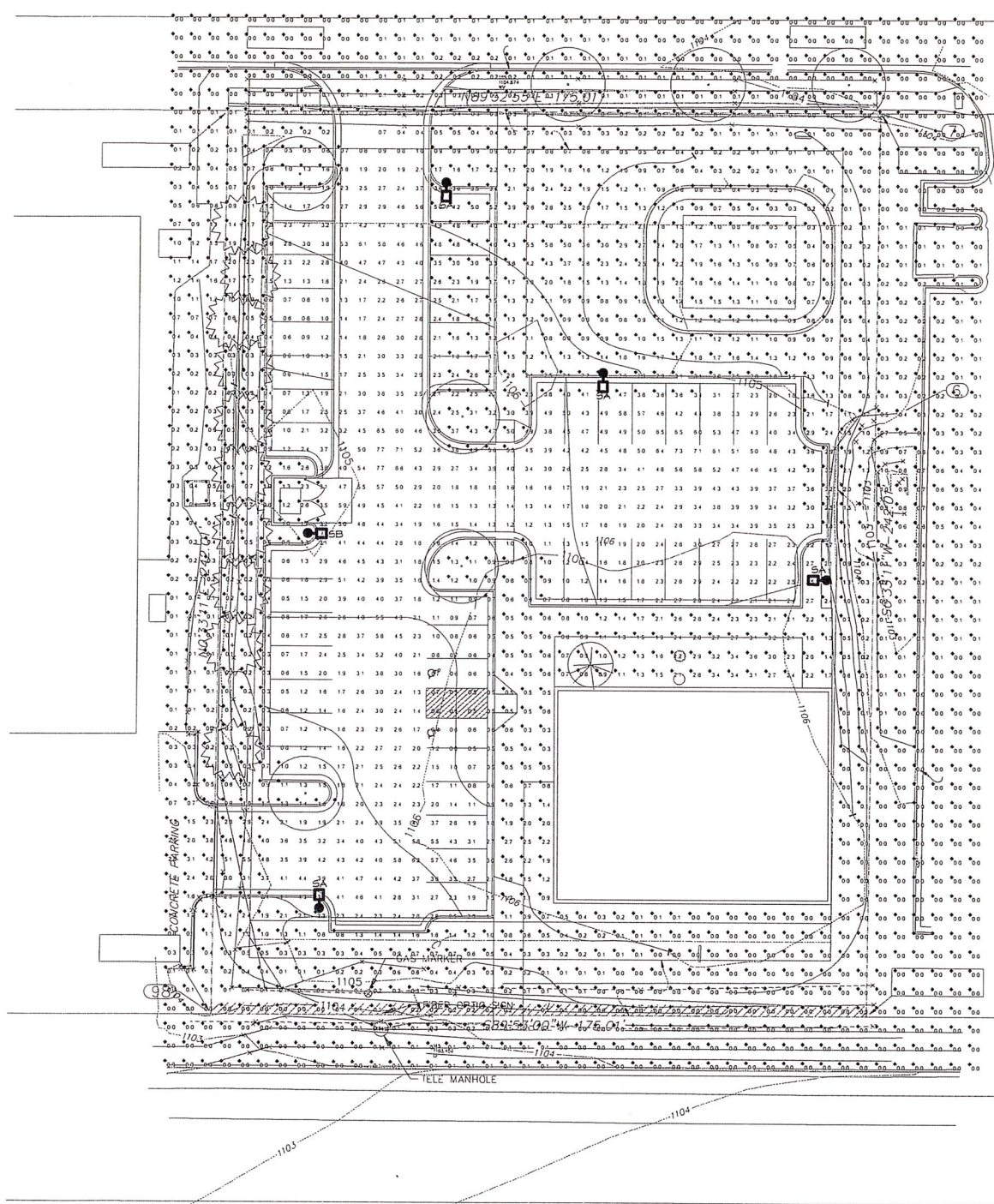


1015 W. Foxwood Drive
Raymore, MO 64083
www.discovervision.com

Discover Vision Centers

DATE: 06-11-17
7-1-17
PROJ.ECTR 16006





PHOTOMETRIC SITE PLAN
SCALE: 1"=20'

STATISTICS					
Description	Avg	Max	Min	Max/Min	Avg/Min
Parking/Drive Thru	2.7	7.7	0.4	19.3:1	6.8:1

CIMARRON LED	Cat.#	Job	Type	Approvals	SPAULDING LIGHTING

SPECIFICATIONS

Construction:

- Stylis vertically finned die-cast solid top housing for maximum heat dissipation. Slope collection of unwanted debris from corners on top of the housing.
- Rugged lower die-cast aluminum heat sink accelerates thermal management and optimizes PCB and optical performance.
- Separate optical and electrical compartment for optimum component operation.
- One piece die cut silicone gasket ensures weather proof seal around each individual LED for IP65 rating.
- Backlight Control (BLC) option available for 85% spill light reduction, doesn't change future appearance or EPA, recommended for Type II and Type IV distributions.
- Stamped bezel provides mechanical compression to seal the optical assembly.
- Complements the Hubbell Southwest series of outdoor fixtures.
- Weight - 45.0 pounds, EPA - 1.3 ft³
- Features exclusive w/HUBB technology - Wireless system for On/Off and 0-100% full range dimming control - Programmable autonomous operation.

Optics:

- Choice of 32 high brightness LED configurations with individual acrylic lenses specially designed for IES Type II, III, IV and V distributions.
- CCT: 5100K standard, 3000K, 4200K and turtle friendly Amber LED options.
- CRI: 70

Electrical:

- Universal input voltage 120-277 VAC, 50/60 Hz
- Integral step-down transformer for 347V & 480V
- Ambient operating temperature -30° C to 40° C
- Automatic thermal self-protection

Drivers have greater than 90% power factor and less than 10% THD

- Optional continuous dimming to 10% or dual circuitry available.
- LED drivers have output power over-voltage, over-current protection and short circuit protection with auto recovery.
- 1050 mA driver available with BCL configuration for increased lumen output.
- LED electrical assembly, including PR diodes, contains no power in the "off" state.
- Surge protection of 10KA @20 µSec wave; clamping voltage of 320V & surge rating of 27KA

Lumen maintenance:

- L50 at 60,000 hours (Projected per IESNA TM-21-11)

Installation:

- Ten die-cast aluminum arm designs are available providing maximum design flexibility.
- The decorative arm offers a sleek, upmost look while the straight arm follows the housing's contoured lines for continuity of style.
- Fixture ships with arm installed for ease of installation and mounts to 1/2" dia pattern.
- Wall bracket, mast arm filter and pole accessories are also available allowing easy mounting for virtually any application.

Finish:

- 100% thermoset polyester powder paint finish applied at nominal 2.5 mil thickness.

Warranty:

- Five year limited warranty (for more information visit www.spauldinglighting.com/industryresources/)

Listings:

- Listed to UL1609 and CSA C22.2#250.0-24 for wet locations.
- DesignLights Consortium qualified
- UL approved - IP65

PRODUCT IMAGE(S)

DIMENSIONS

CERTIFICATIONS LISTINGS

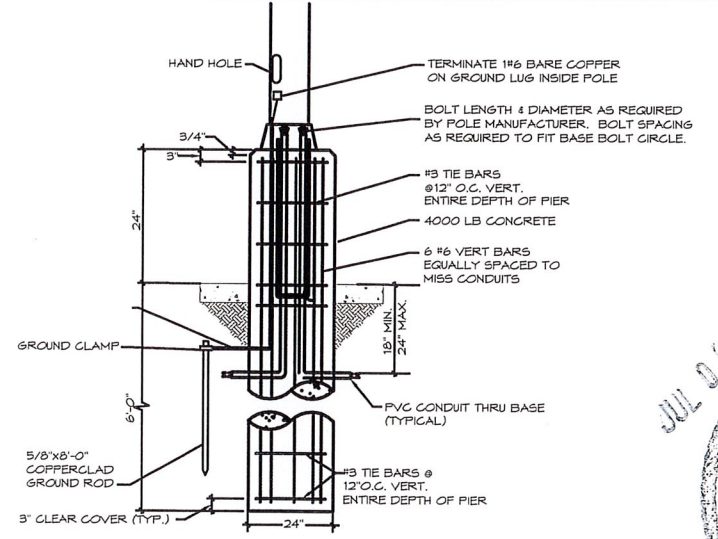
ORDERING INFORMATION SEE NEXT PAGE

SPAULDING LIGHTING Spaulding Lighting • 701 Midtown Boulevard • Greenville, SC 29607 • Phone: 654-670-1000
Our fixtures are designed to be used in a variety of applications. Product specifications are subject to change without notice.
© 2019 SPAULDING LIGHTING. All Rights Reserved. For more information visit www.spauldinglighting.com • #SP1408-0101

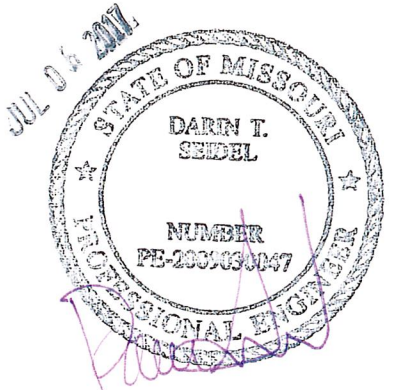
LIGHT FIXTURE POLE SCHEDULE

SPAULDING LIGHTING 555-25-40-7-A2-XX	20'X4" SQUARE STRAIGHT STEEL POLE ON 2' HIGH CONCRETE BASE. VERIFY FINISH
---	--

Symbol	Label	Qty	Catalog Number	Description	Lamp	Lumens	LLF	Notes
	SA	4	CL1-X-42L-1-4K-4-BC	TYPE IV CIMARRON LED	40 - NICHIA 4000K LED's	Absolute	0.4	20B
	SB	1	CL1-X-42L-1-4K-2-BC	TYPE II CIMARRON LED	40 - NICHIA 4000K LED's	Absolute	0.4	20B



POLE FOUNDATION DETAIL
SCALE: NONE



BC ENGINEERS INCORPORATED
5720 Reeder
Shrewport, La. 70533
(913)262-1772

FE COA #2009003629

NOT TO SCALE

PROJECT FOR:
DISCOVER VISION
RAYMORE, MO

ISSUE DATE:
6-15-17

REVISION:

SHEET TITLE
PHOTOMETRIC

PH1