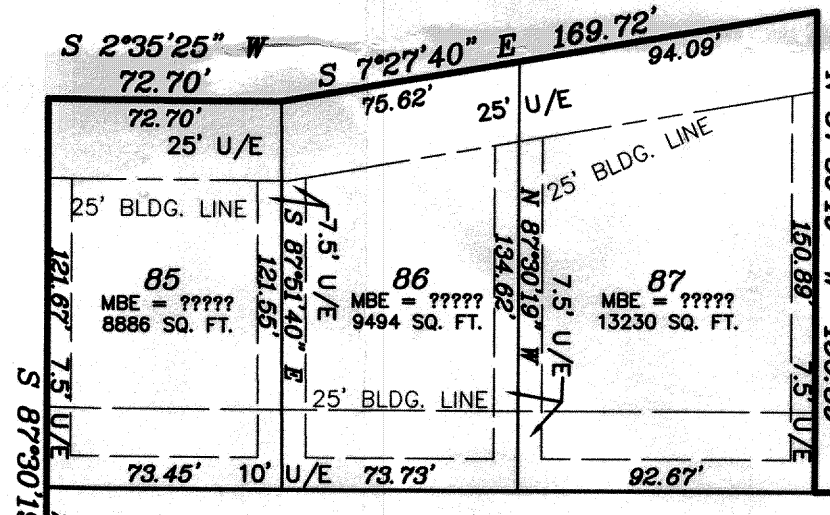
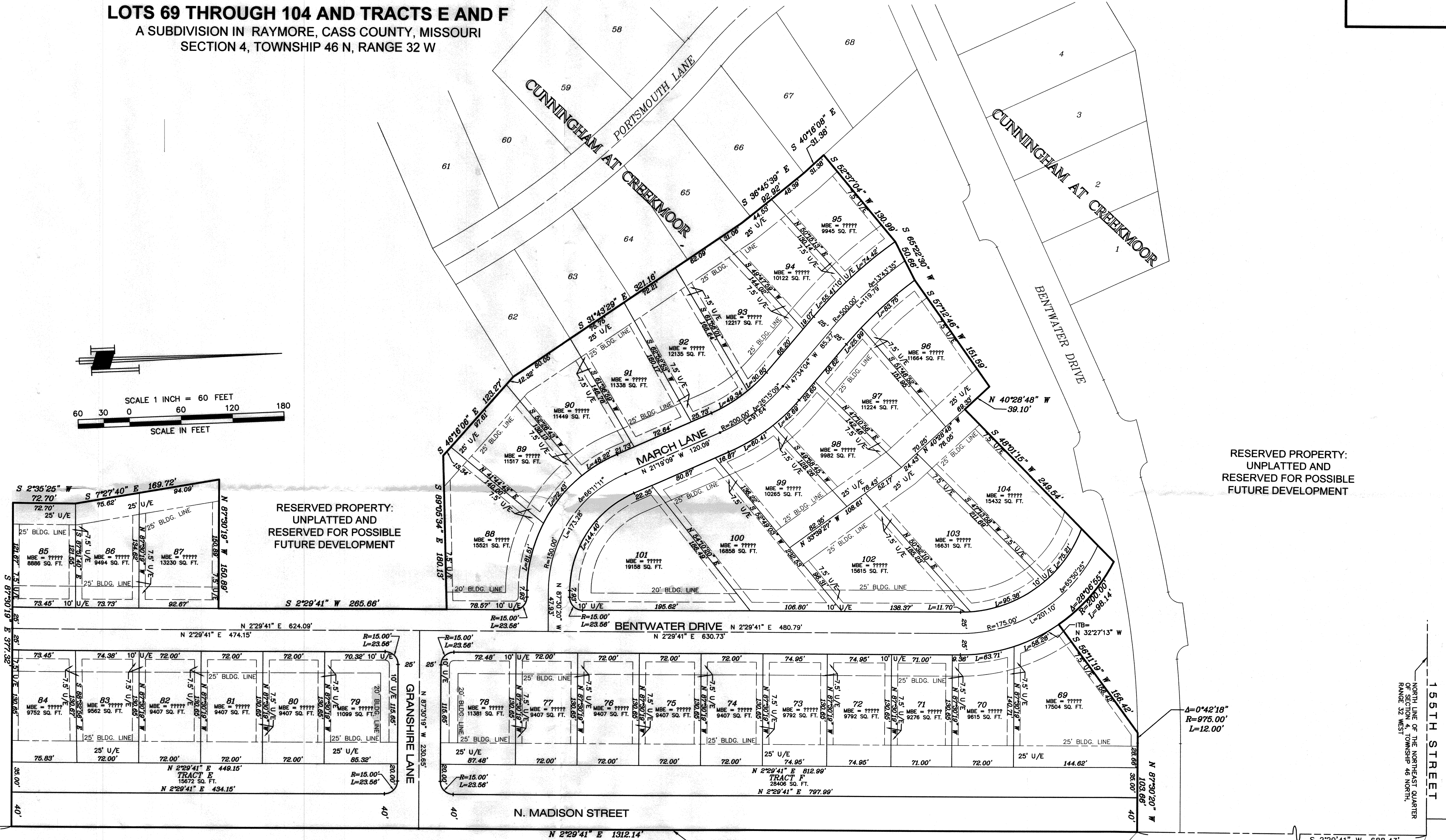
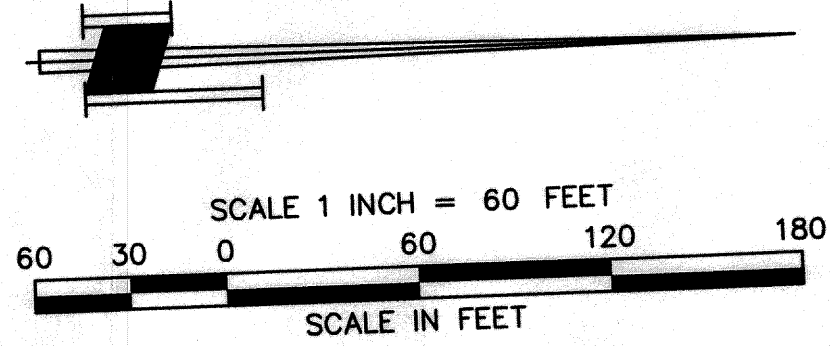


FINAL PLAT CUNNINGHAM AT CREEKMOOR- SECOND PLAT

LOTS 69 THROUGH 104 AND TRACTS E AND F
A SUBDIVISION IN RAYMORE, CASS COUNTY, MISSOURI
SECTION 4, TOWNSHIP 46 N, RANGE 32 W



RESERVED PROPERTY:
UNPLATTED AND
RESERVED FOR POSSIBLE
FUTURE DEVELOPMENT

RESERVED PROPERTY:
UNPLATTED AND
RESERVED FOR POSSIBLE
FUTURE DEVELOPMENT

RESERVED PROPERTY:
UNPLATTED AND
RESERVED FOR POSSIBLE
FUTURE DEVELOPMENT

LEGEND	
	SETBACK LINE
	UTILITY & DRAINAGE EASEMENT
	SUBDIVISION BOUNDARY
	COMBINATION BLDG SETBACK LINE & UTILITY/DRAINAGE EASEMENT LINE

Chart of "Grinder Pump Lots"
No lots on this plat are to be served by the low pressure grinder system.

SURVEYOR'S CERTIFICATION:
I HEREBY CERTIFY THAT WE HAVE MADE A SURVEY OF THE PREMISES DESCRIBED HEREIN WHICH MEETS OR EXCEEDS THE CURRENT MISSOURI MINIMUM STANDARDS FOR PROPERTY BOUNDARY SURVEYS AS ADOPTED BY THE MISSOURI BOARD FOR ARCHITECTS, PROFESSIONAL ENGINEERS, PROFESSIONAL LAND SURVEYORS AND LANDSCAPE ARCHITECTS AND I FURTHER CERTIFY THAT I HAVE COMPLIED WITH ALL STATUTES, ORDINANCES, AND REGULATIONS GOVERNING THE PRACTICE OF SURVEYING AND PLATTING OF SUBDIVISIONS, AND THAT THE RESULTS OF SAID SURVEY ARE REPRESENTED ON THIS PLAT TO THE BEST OF MY PROFESSIONAL KNOWLEDGE AND BELIEF.

ANDERSON
SURVEY COMPANY
203 N. W. EXECUTIVE WAY
LEE'S SUMMIT, MISSOURI 64063
(816) 246-5050