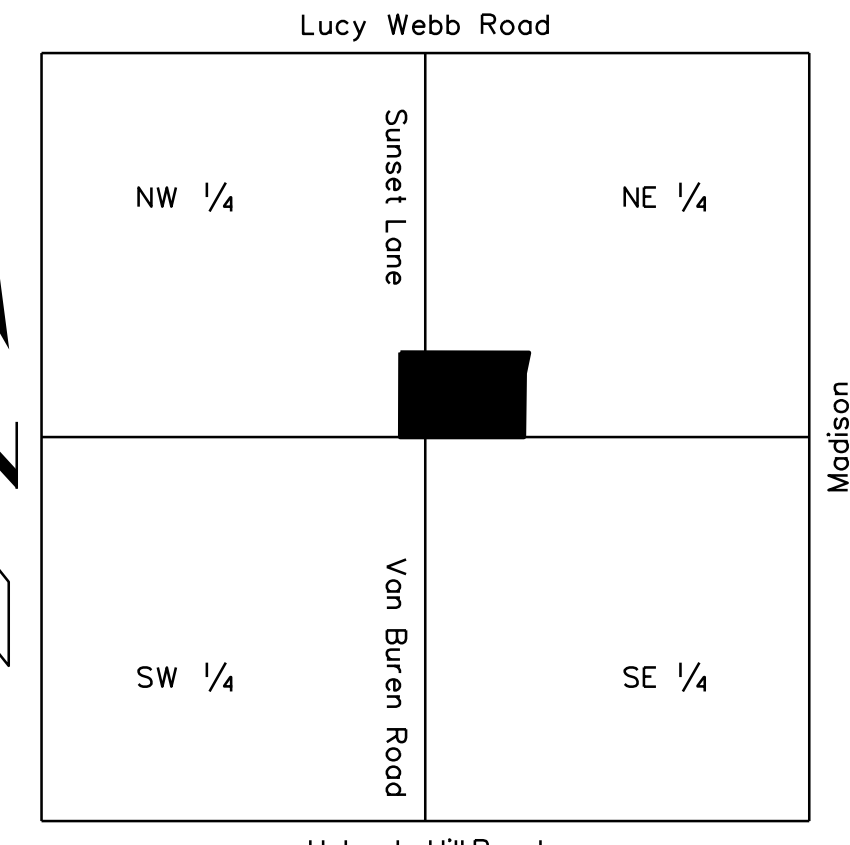
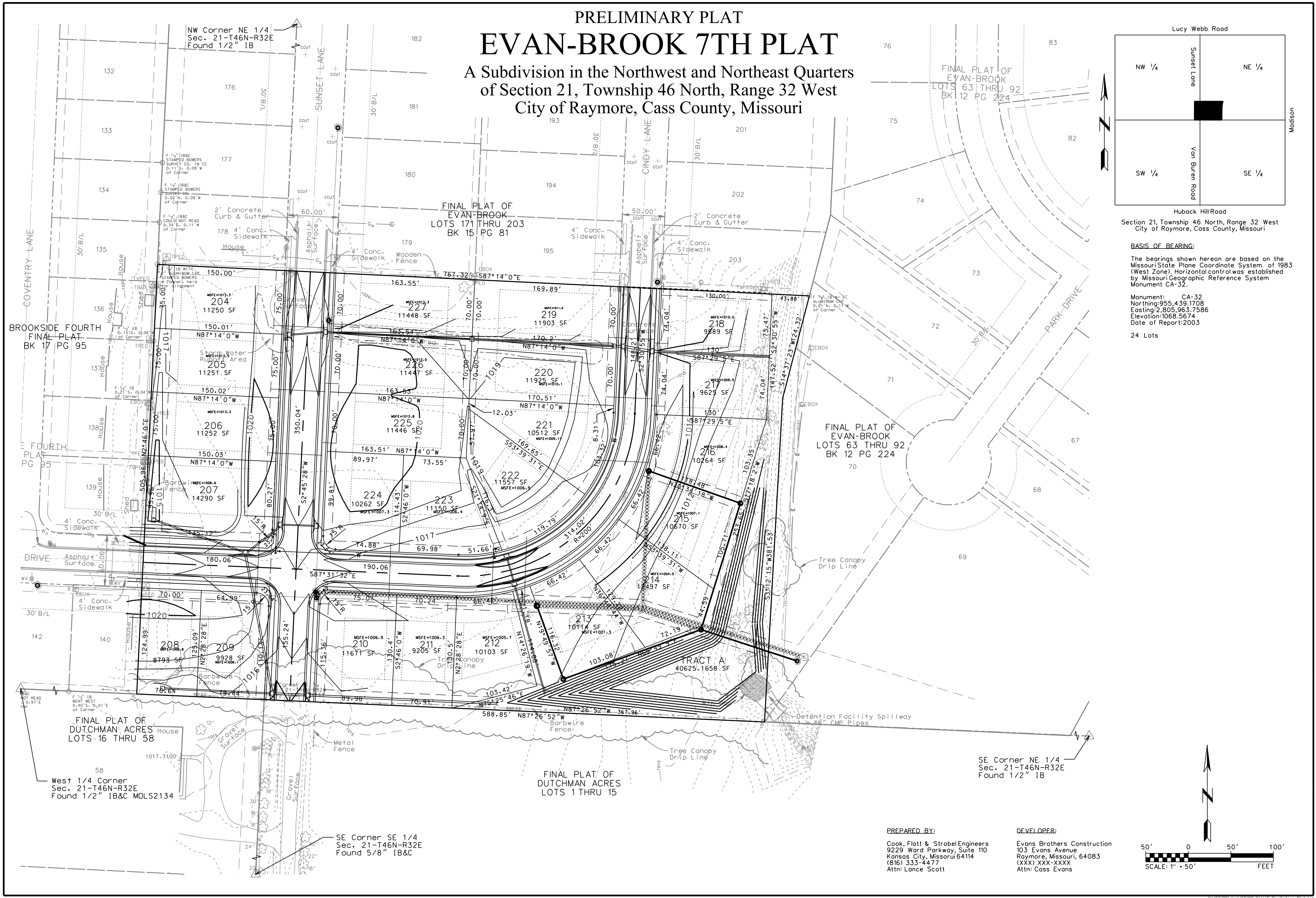


# PRELIMINARY PLAT

## EVAN-BROOK 7TH PLAT

A Subdivision in the Northwest and Northeast Quarters  
of Section 21, Township 46 North, Range 32 West  
City of Raymore, Cass County, Missouri



Section 21, Township 46 North, Range 32 West  
City of Raymore, Cass County, Missouri

**BASIS OF BEARING:**  
The bearings shown hereon are based on the Missouri State Plane Coordinate System of 1983 (West Zone). Horizontal control was established by Missouri Geographic Reference System Monument CA-32.

Monument: CA-32  
Northing: 955,439.1708  
Easting: 2,805,963.7586  
Elevation: 1068.5674  
Date of Report: 2003  
24 Lots

**CFS**  
Cook, Flatt & Strobel  
ENGINEERS  
9229 WARD PARKWAY, SUITE 110  
KANSAS CITY, MISSOURI 64114  
Phone (816) 333-4477  
Fax (816) 333-6688

Rev.	Date	By	Description

Designed by:	Date:	Rev.:	
Dwn by:	00-00-00		
Submitted by:			

PRELIMINARY PLAT

Sheet reference number:  
**2**  
Sheet 2 of 8



**PREPARED BY:**  
Cook, Flatt & Strobel Engineers  
9229 Ward Parkway, Suite 110  
Kansas City, Missouri 64114  
(816) 333-4477  
Attn: Lance Scott

**DEVELOPER:**  
Evans Brothers Construction  
103 Evans Avenue  
Raymore, Missouri, 64083  
(XXX) XXX-XXXX  
Attn: Cass Evans