

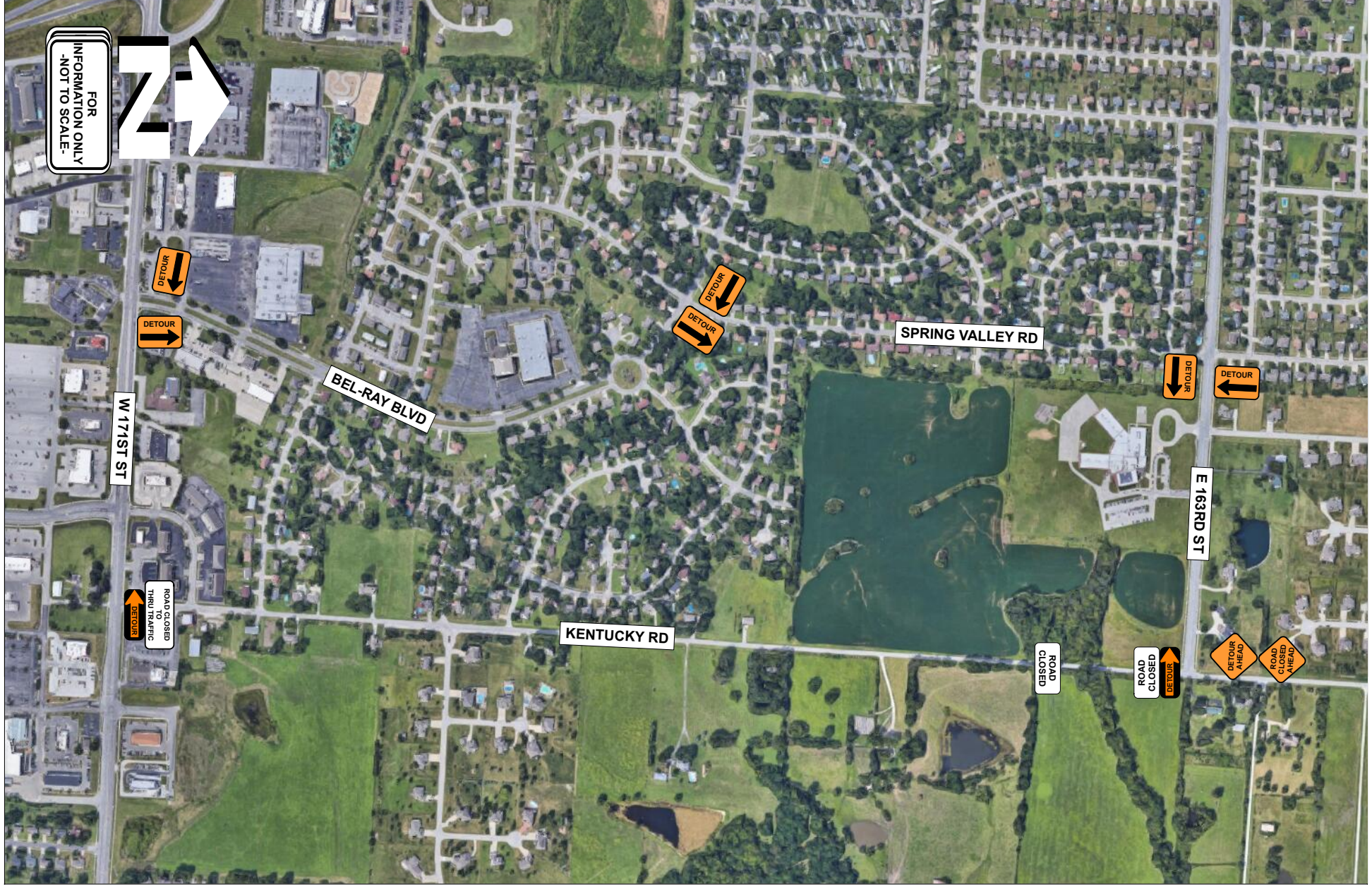
Spacing Charts Based on MUTCD Must be Approved by an Engineer

Speed (MPH) Prior To Road Work	SIGN SPACING, FT.		BUFFER SPACE, FT.	TAPER LENGTH, FT.		CHANNELIZING SPACING, FT.	
	Non-Divided Highways	Divided Highways	Length	Shoulder (10 ft Width)	Lane (12 ft Width)	Through Taper	Through Buffer/Work Area
0-35	200	200	250	70	245	35	50
40-45	350	500	360	150	540	40	80
50-55	500	1000	495	185	660	50	100
60-70	SA-1000, SB-1500, SC-2640		730	235	840	60	120
Urban Low Speed - 100 FT							



Date: 12/6/23 Author: Streetwise, Inc. Project: E 163rd St & Kentucky Rd
 Traffic Control Suggestion For : City of Raymore By: Brandon

Comments:
 Drawing not to scale. Traffic control plan must be approved by an engineer. This is a suggestion only. Streetwise, Inc. has no liability for this suggested traffic control plan.
 Actual placement and spacing of all traffic control devices will depend on field conditions and must conform to MUTCD standards.



FOR INFORMATION ONLY - NOT TO SCALE -