

Landfill Opposition Presentation

November 2022





MO-150 Highway

SW Peterson Road

Property Location
960 +/- Acres

Horridge Road

155th Street

N. Foxridge Drive

N. Madison Street

163rd Street

© 2015 Earthstar Maps

Location Map

Timeline of Information

June/July 2022

- First learned of possibility of a landfill development in southeast Kansas City, MO, but initial research could not confirm information

October 2022

- City of Raymore received multiple communications from different sources regarding project
- City of Raymore begins attempts to contact Kansas City officials
- City of Raymore contacted stakeholders and publicly released a statement in opposition to a landfill in this location

Timeline of Information

Nov. 1, 2022

- Attorney Jim Bowers (Rouse Frets White Goss) confirms involvement in possible development of the “Flying H Landfill” in an email
- Bowers confirms he represents Aden Monheiser, a developer of this project, in phone conversation with Raymore City Attorney Jonathan Zerr

As of today, Nov. 14, 2022

- Multiple attempts to connect with Kansas City officials still unanswered
- City of Raymore is engaging with consulting and PR firms and will be engaging with legal firms

Concerns with Location

Health & well-being

Economic

Environmental

Located in close proximity to tens of thousands of area residents and multiple schools

- Raymore, Lee's Summit, Grandview, KC
- Summit Pointe Elementary, Timber Creek Elementary, Creekmoor Elementary

Economic impacts

- Negative impact on future development
- Deterioration of home values

Concerns with Location

Health & well-being

Economic

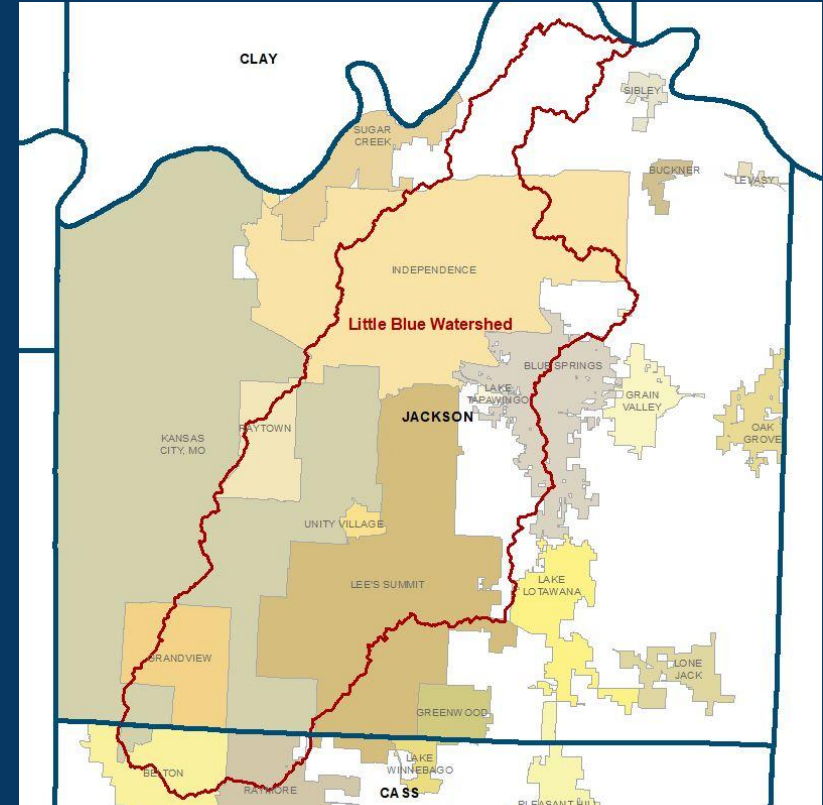
Environmental

Environmental impacts

- Little Blue River Watershed
- Headwaters to Longview Lake
- Drainage to multiple residential areas and Creekmoor Lake
- Landfill odors
- Near constant excavation noise 24/7

Zoning Designation for Site

- Zoned R-80, low-density residential
- [Longview Lake Land Use Plan](#) supports this designation
- Little Blue Watershed Feasibility Study (in Phase II)
- Current landfill capacities and longevity in region
 - [2019 Johnson County, KS Solid Waste Management Plan](#)



Next Steps

The City of Raymore will spearhead efforts on behalf of all stakeholders

- Proposed location unacceptable
- Alternative site possibilities
- Continued stakeholder collaboration

Communication efforts must be unified

**A landfill in this location is
absolutely unacceptable.**

Questions?