

## **Public Meeting Notice**

### **City of Raymore, Missouri**

**Good Neighbor Meeting:** Grube Property Rezoning - 611 E. Walnut St.  
**Date:** Wednesday, January 12, 2022  
**Time:** 6:30 p.m.  
**Location:** Council Chambers, City Hall, 100 Municipal Cir.

An application has been filed by Jake Loveless (Griffin Riley Property Group) requesting to reclassify the zoning designation of 10.02 Acres M/L. The application contains the undeveloped acres south of Dawn St. and east of S. Sunrise Dr. and proposes the existing zoning designation change from "M-1" Light Industrial District to "R-3A" Multiple Family Residential District.

A location map of the property area requested to be rezoned is included which includes the general layout of the site.

If you would like a full-size copy of the drawing, you may obtain one at the CODES window at City Hall.

Because you own property near the area proposed to be rezoned, or are an identified interested party, you are being notified of the upcoming Good Neighbor meeting. This is a good opportunity to obtain information about the project, and to ask questions of the applicant.

The Good Neighbor informational meeting will be held on **Wednesday, January 12, 2022**, and will begin at **6:30 pm in the Council Chambers of City Hall, 100 Municipal Circle, Raymore, MO 64083**. City staff will make a brief introduction of the proposed project, followed by a presentation by the applicant. City staff and representatives from the project will be available



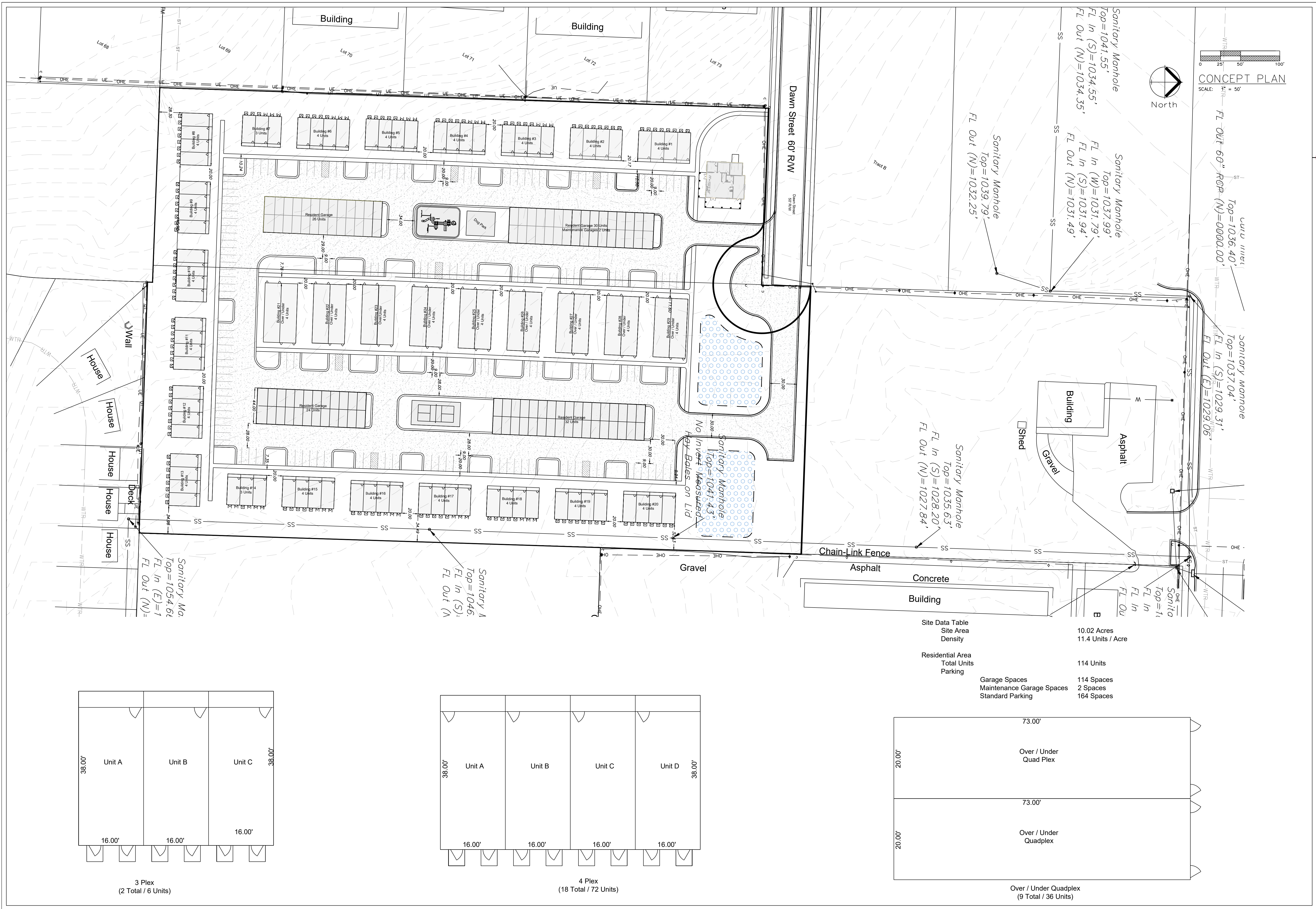
for comments and questions.

The Planning and Zoning Commission will hold a public hearing on the application on **Tuesday, January 18, 2022** beginning at **7:00 pm in the Council Chambers of City Hall, 100 Municipal Circle, Raymore, MO 64083.**

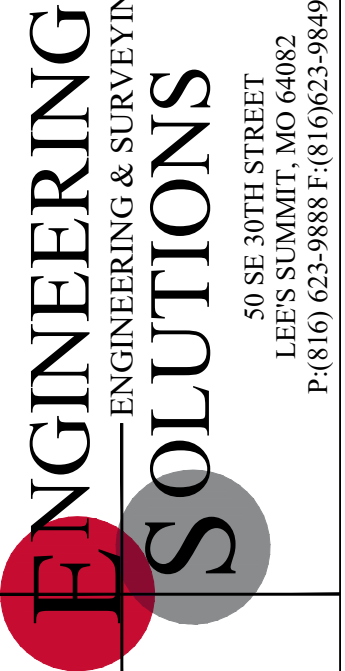
**Should the Planning and Zoning Commission make a recommendation on the proposed project, the City Council will hold a public hearing on the applications on Monday, January 24, 2021 beginning at 7:00 pm** in the Council Chambers of City Hall, 100 Municipal Circle, Raymore, Missouri.

If you are unable to attend the meeting, but would like to share questions, comments or concerns about the proposed project, please contact the Department of Development Services at (816) 892-3016 or by email at [deppert@raymore.com](mailto:deppert@raymore.com).





CONCEPT PLAN  
SCALE: 1" = 50'



Professional Registration  
Missouri  
Engineering 2005002186-D  
Surveying 20050008319-D  
Kansas  
Engineering E-1695  
Surveying LS-218  
Oklahoma  
Engineering S254  
Nebraska  
Engineering CA2821

Project:  
RAYMORE SKETCH  
Issue Date:  
October 30, 2020

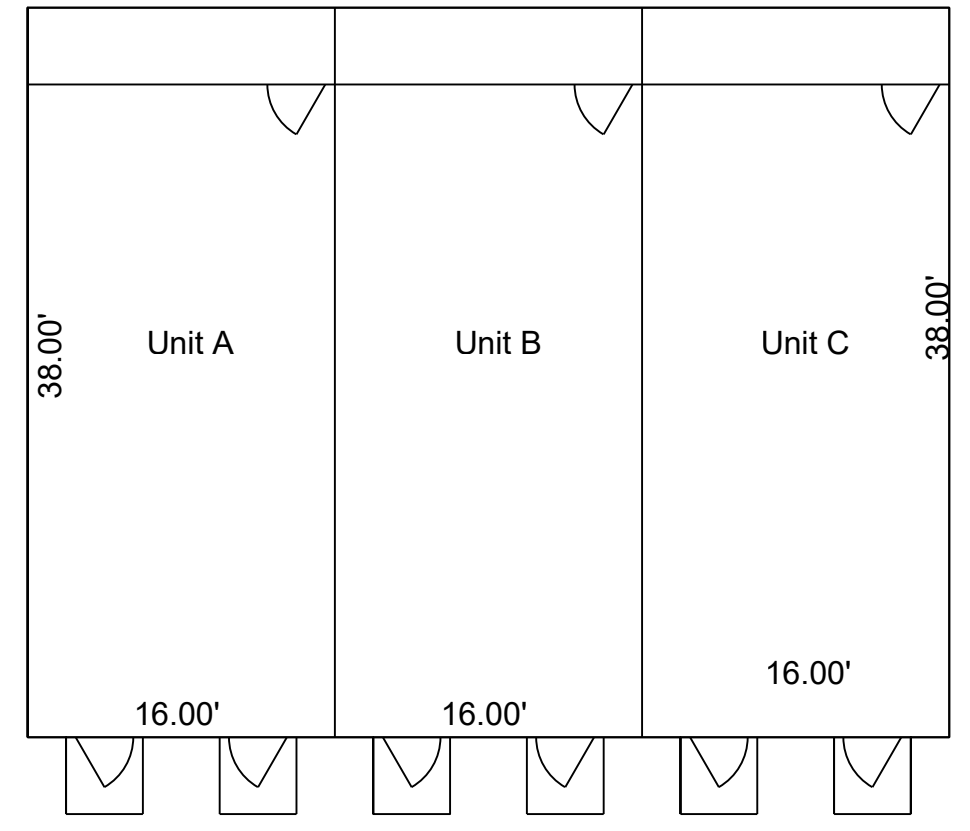
CONCEPT PLAN  
Preliminary Plans for:  
Raymore  
Raymore, Cass County, Missouri

Matthew J. Schlicht  
MO PE 2006019708  
KS PE 19071  
NE PE 25226  
PE E-14335

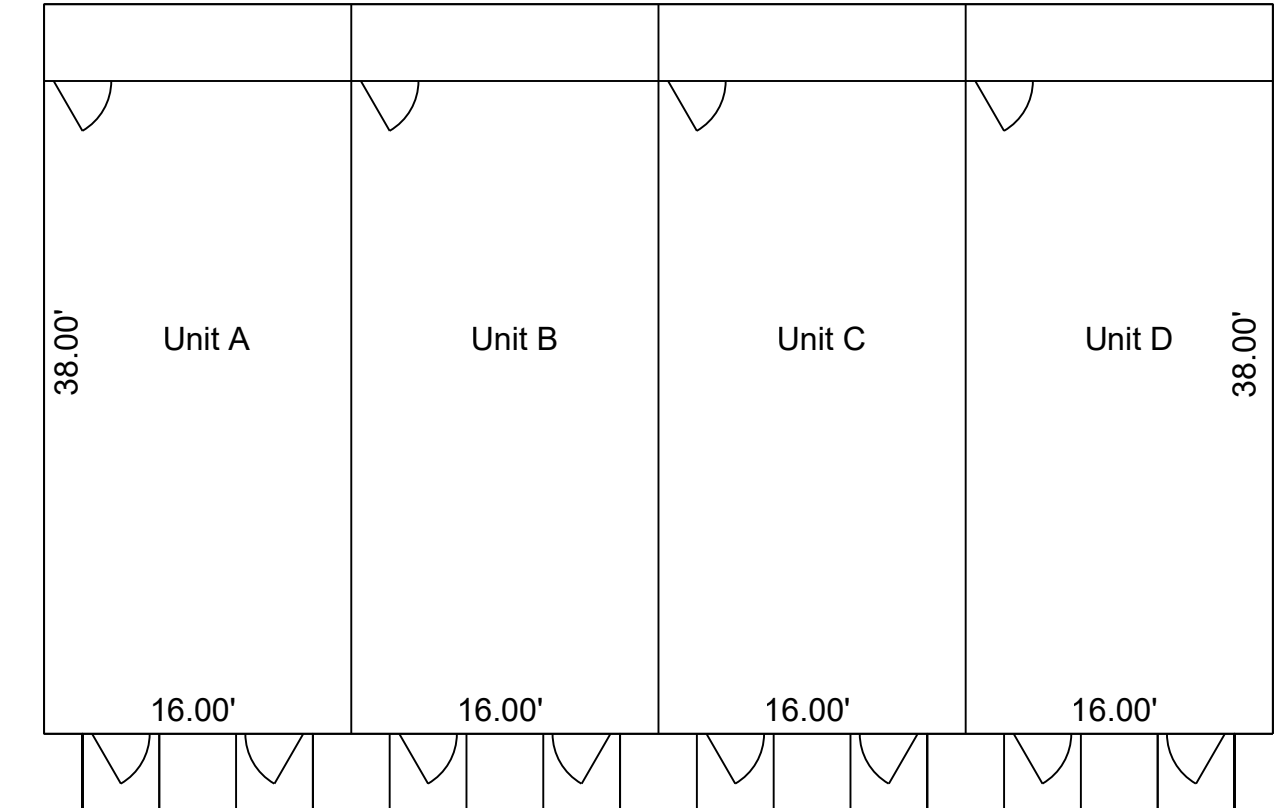
REVISIONS


C.010

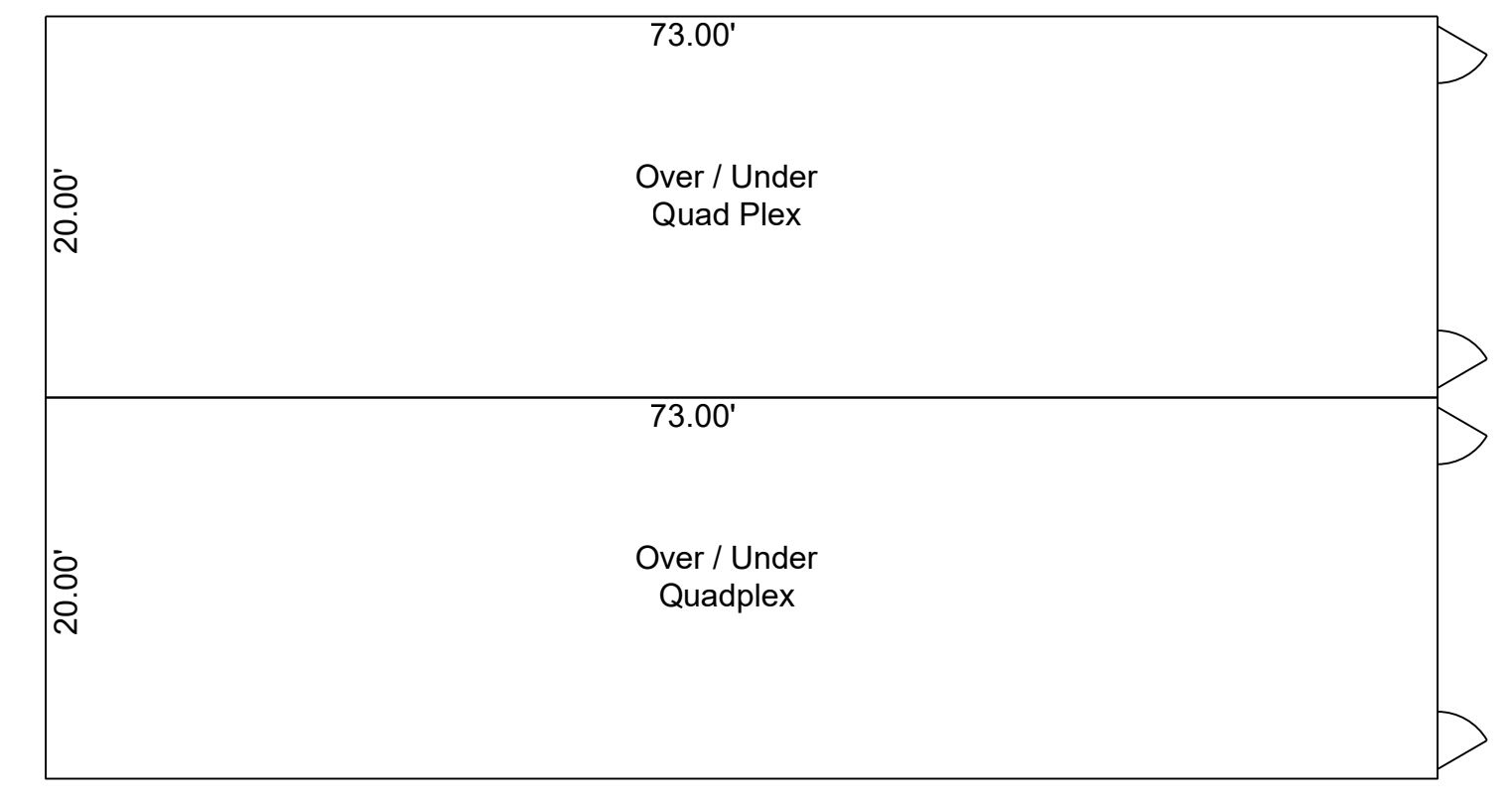
Site Data Table	
Site Area	10.02 Acres
Density	11.4 Units / Acre
Residential Area	
Total Units	114 Units
Parking	
Garage Spaces	114 Spaces
Maintenance Garage Spaces	2 Spaces
Standard Parking	164 Spaces



3 Plex  
(2 Total / 6 Units)



4 Plex  
(18 Total / 72 Units)



Over / Under Quadplex  
(9 Total / 36 Units)



















