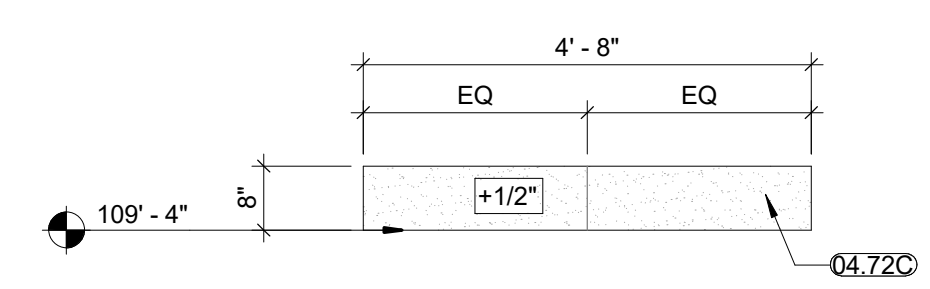
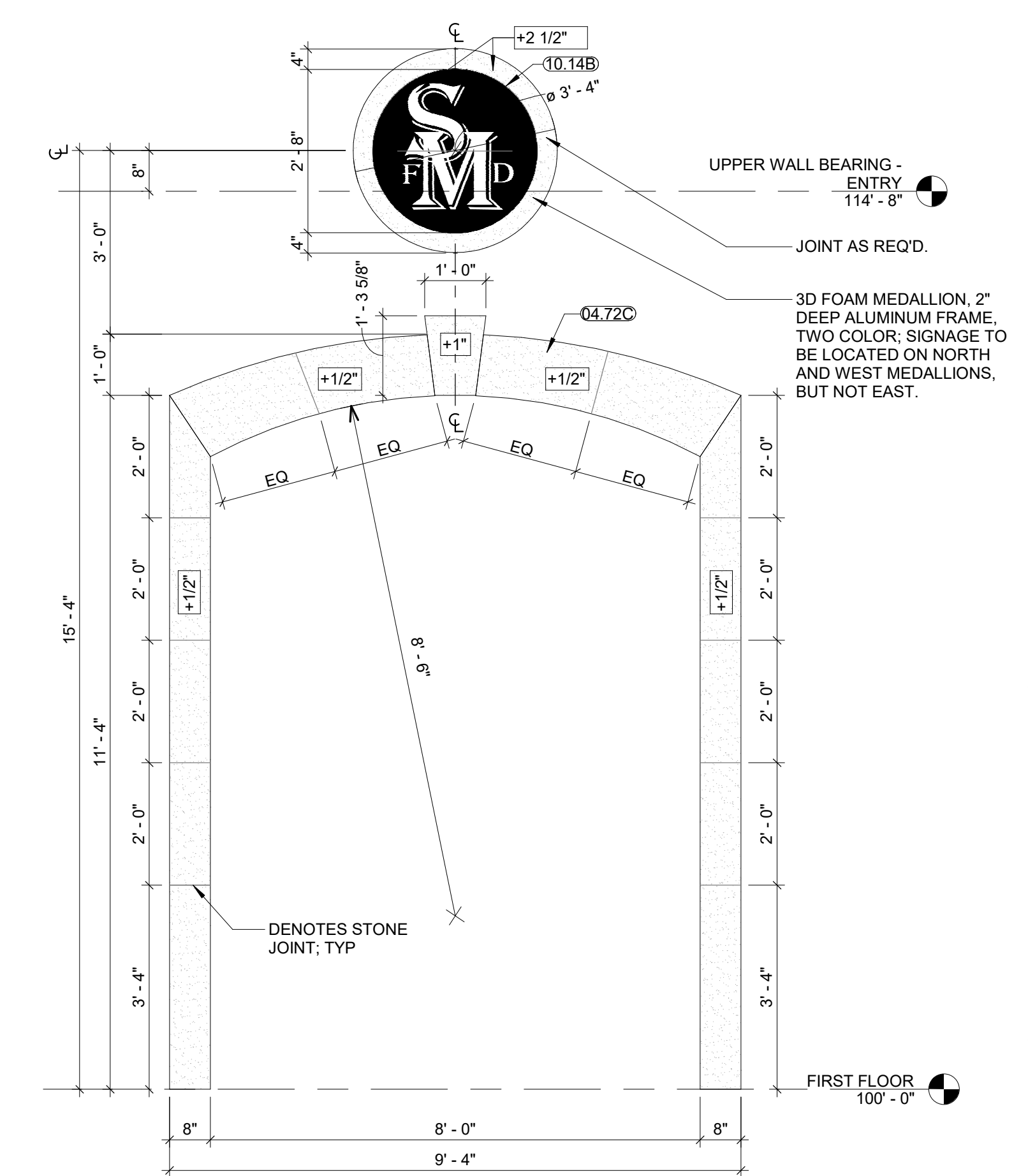




**H7 COURSED ASHLAR PATTERN**  
1" = 1'-0"



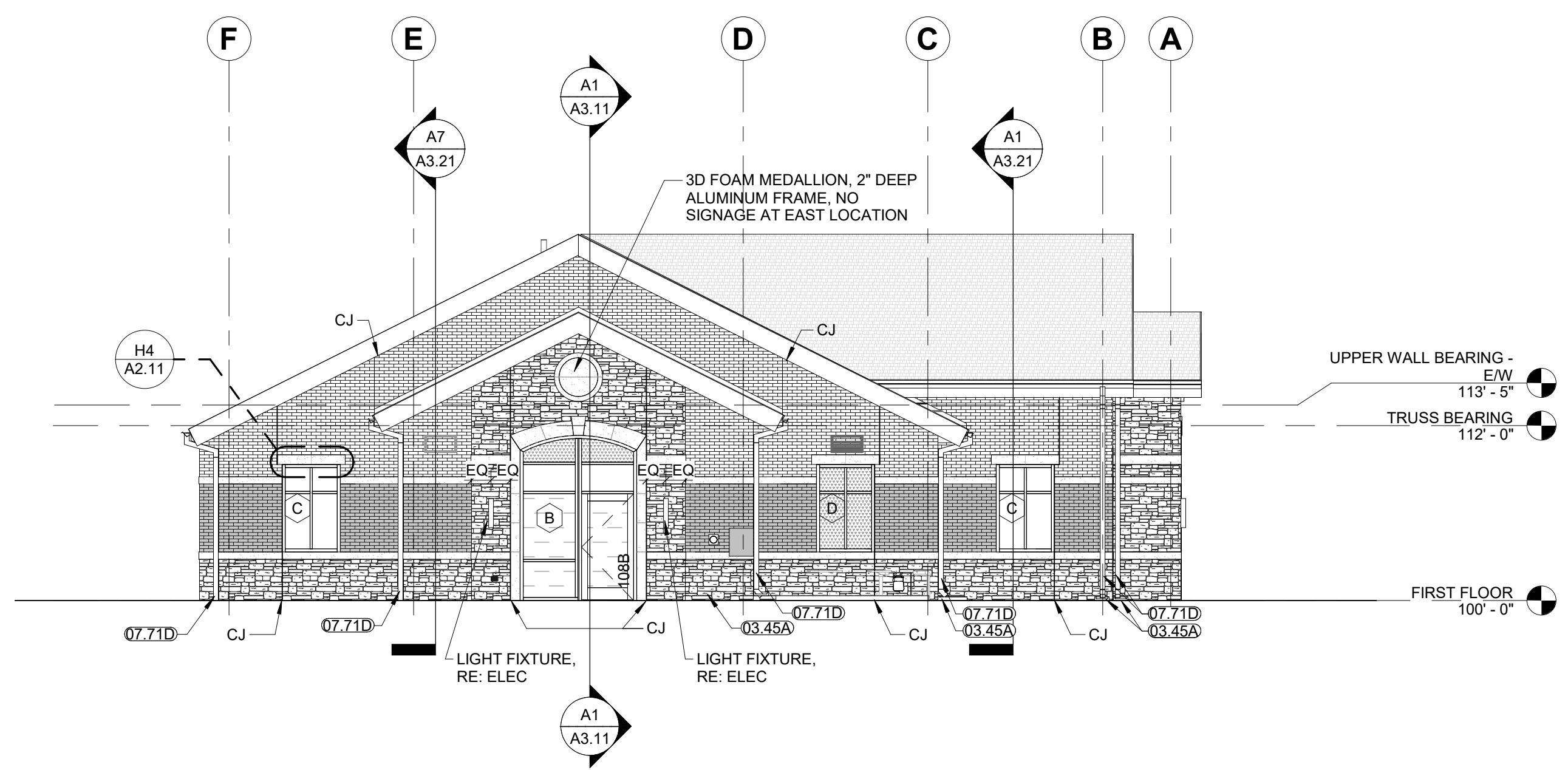
**H4 ENLARGED STONE - LINTEL TYP**  
1/2" = 1'-0"



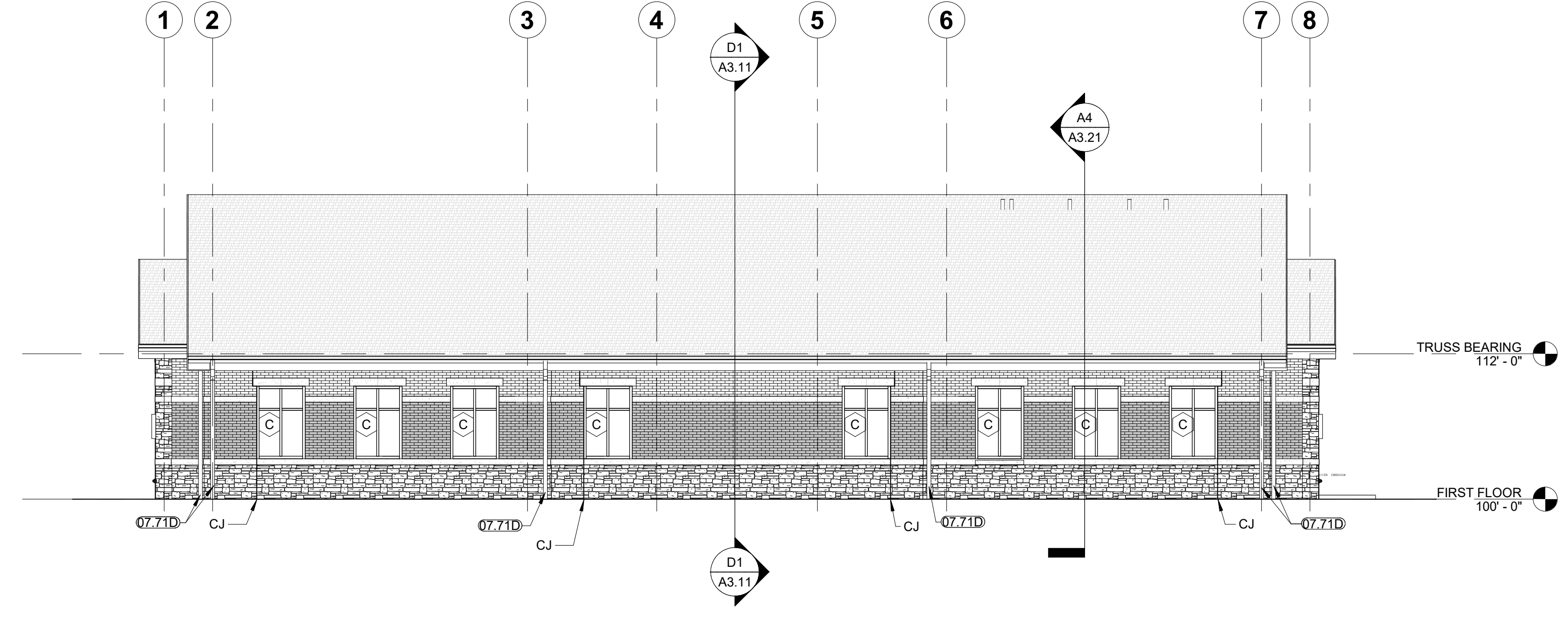
**H1 ENLARGED STONE - ENTRY**  
1/2" = 1'-0"

**GENERAL NOTES - EXTERIOR ELEVATIONS:**  
1. RE: SHEET G0.01 FOR ADDITIONAL GENERAL NOTES THAT ARE APPLICABLE.  
2. DIMENSIONS SHOWN ON THE EXTERIOR ELEVATIONS ARE TO THE FACE OF EXTERIOR WALL, FACE OF MASONRY (FOM), FACE OF CONCRETE WALLS (FOC), AND COLUMN GRID LINES, UNLESS OTHERWISE NOTED OR INDICATED.  
3. RE: THE WINDOW TYPES SHEET FOR ALL EXTERIOR WINDOW TYPES AND GLASS TYPES.

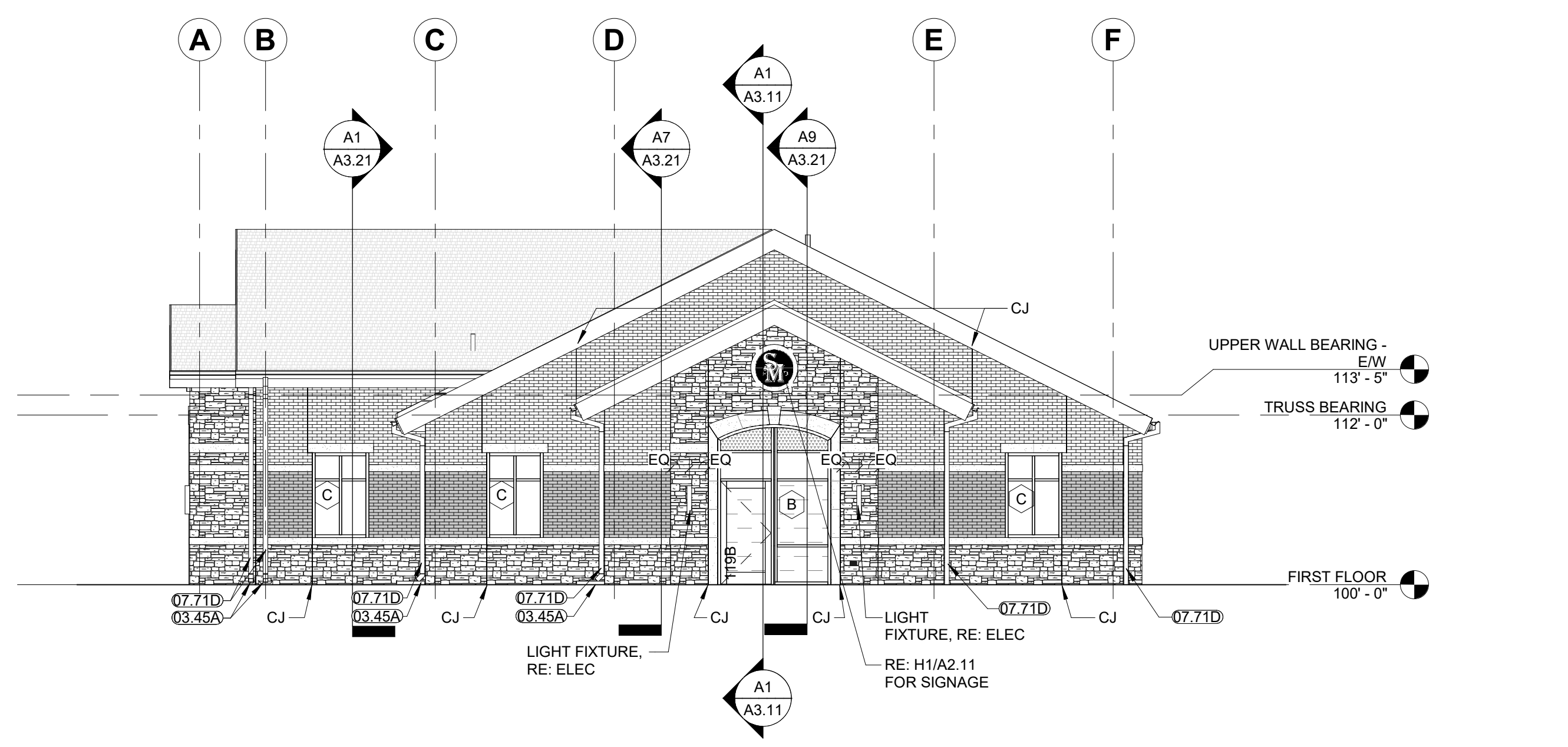
MATERIAL KEYNOTES	
03.45A	PRECAST CONCRETE SPLASH BLOCK 12"x30"
04.72C	CAST STONE, SMOOTH
07.71D	PREFINISHED METAL DOWNSPOUT
10.14B	3D FOAM MEDALLION



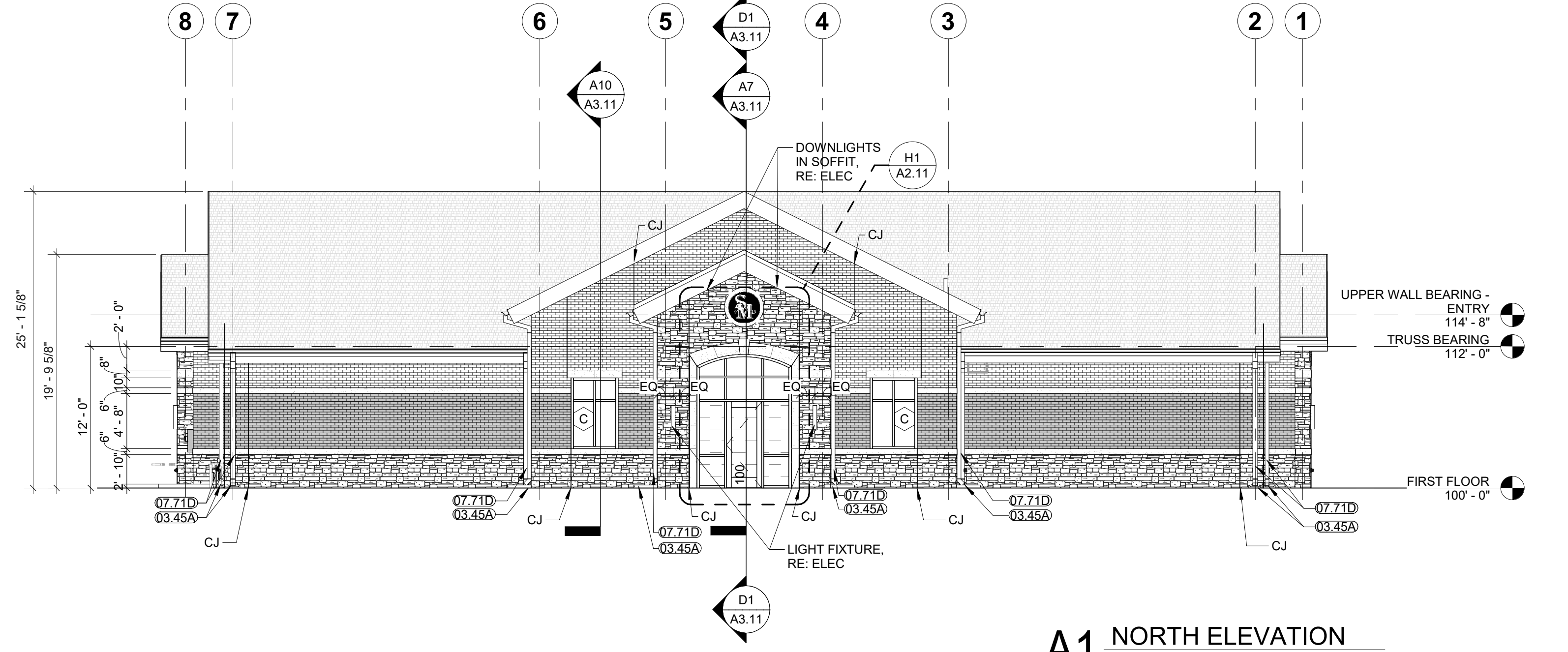
**E9 EAST ELEVATION**  
1/8" = 1'-0"



**E1 SOUTH ELEVATION**  
1/8" = 1'-0"



**A9 WEST ELEVATION**  
1/8" = 1'-0"



**A1 NORTH ELEVATION**  
1/8" = 1'-0"

EXTERIOR ELEVATION MATERIALS	
	<b>FIELD BRICK A</b> MANUF: YANKEE HILL COLOR: DARK RED VELOUR
	<b>FIELD BRICK B</b> MANUF: ENDICOTT COLOR: MIX 70% DARK IRONSPOT VELOUR 30% MEDIUM IRONSPOT 45 VELOUR
	<b>CAST STONE</b> MANUF: CONTINENTAL CASE STONE COLOR: #1102 FINISH: ROUGH FACE PATTERN: COARSED ASHLAR
	<b>CAST STONE</b> MANUF: CONTINENTAL CAST STONE COLOR: #1102 FINISH: SMOOTH FACE
	<b>ASPHALT SHINGLE ROOF</b> MANUF: GAF TIMBERLINE HDZ COLOR: CHARCOAL
	<b>METAL - FASCIA / COPING / GUTTERS / SOFFIT</b> MATCH EXTRA DARK BRONZE (TUBELITE)
	<b>STOREFRONT</b> MANUF: TUBELITE SERIES: TU240000 COLOR: DARK BRONZE