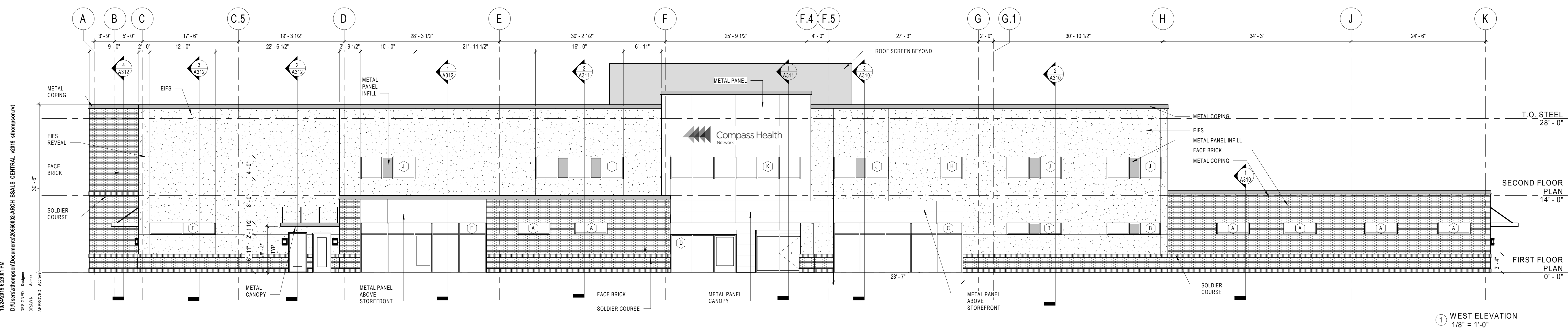
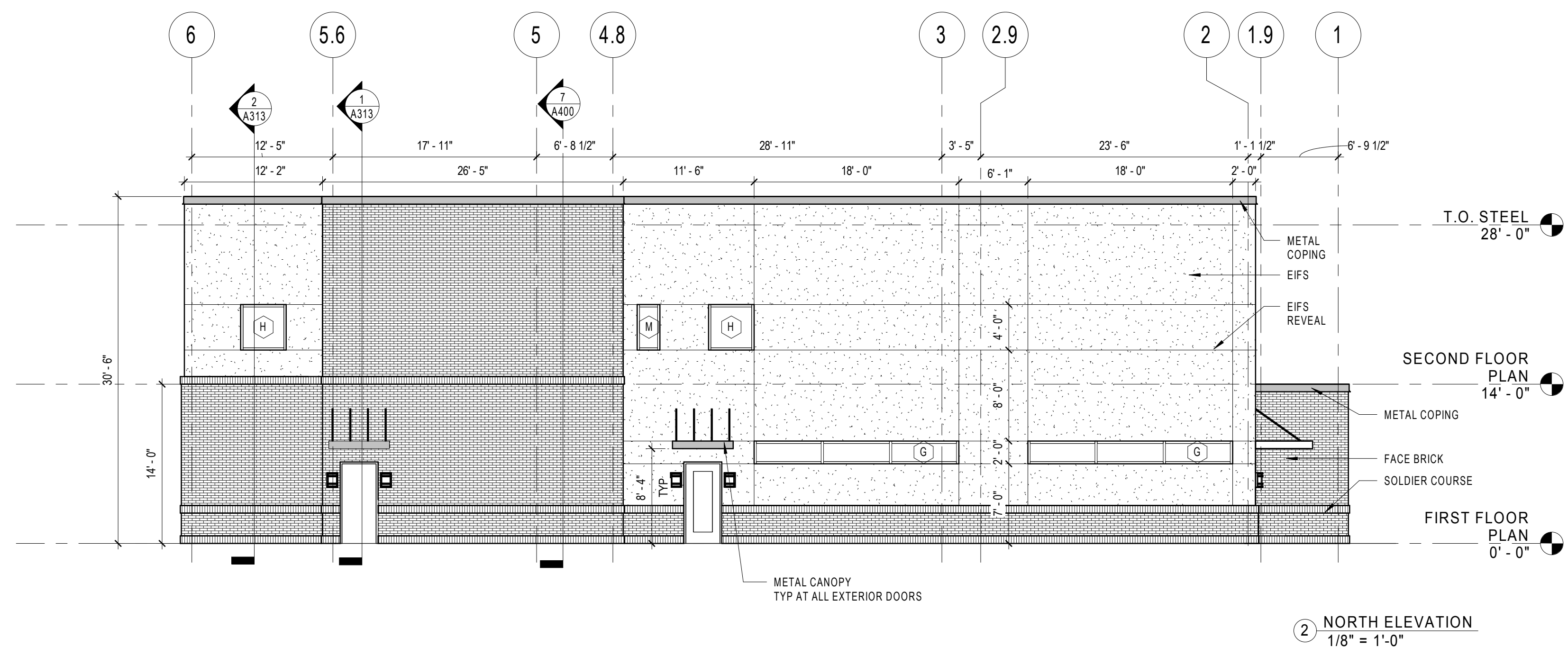
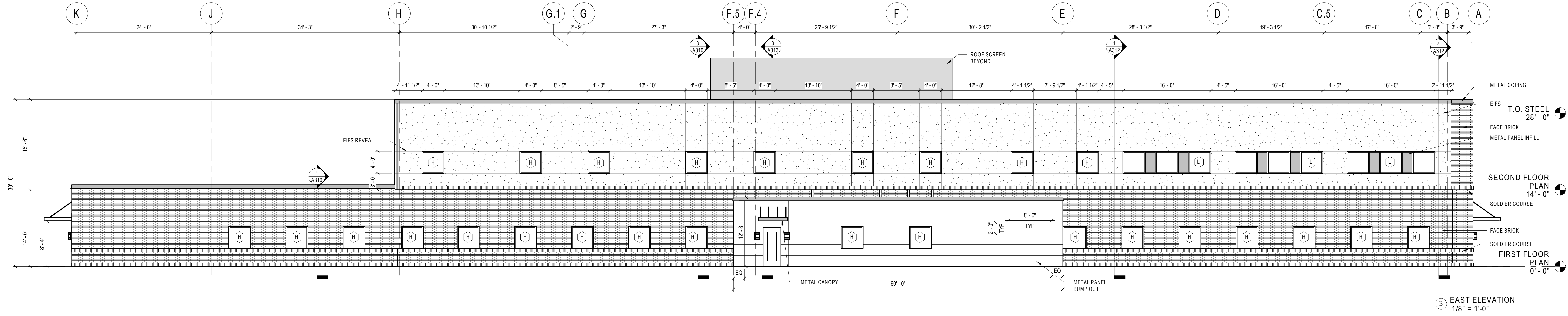
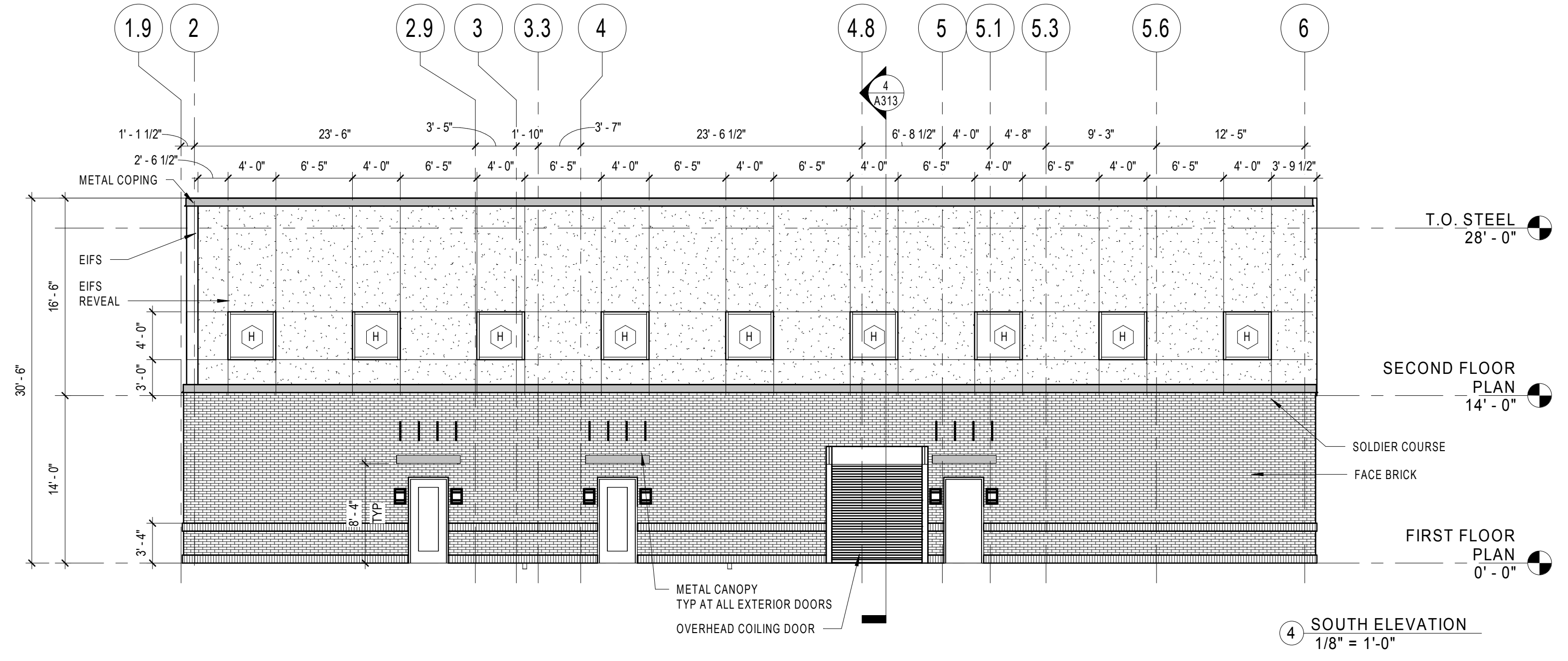


RAYMORE BEHAVIORAL HEALTH CLINIC

CLIENT PROJECT NO. - 2066
CONSTRUCTION DOCUMENTS
100%



MARK	DATE	DESCRIPTION
1	10/24/2019	CITY COMMENTS

ELEVATIONS

10/24/2019 6:26:01 PM
 D:\Users\bsal\Documents\2066002\ARCH\BSALS_CENTRAL_1019_ahampart.rvt
 10/24/2019 6:26:01 PM
 BSALS

TOILET ACCESSORIES					
NUMBER	DESCRIPTION	MANUF.	MODEL	INSTALL	REMARKS
01	TOILET TISSUE DISPENSER- SURFACE MOUNTED	-	-	OFCI	BY VENDOR
02	PAPER TOWEL DISP	-	-	OFCI	BY VENDOR
03	SOAP DISP	-	-	OFCI	BY VENDOR
04	SANITARY NAPKIN DISPOSAL-PARTITION MOUNTED	-	-	OFCI	BY VENDOR
05	GRAB BAR	BOBRICK	8-6806-18", 8-6806-36", 8-6806-42"	OFCI	PROVIDE HORIZONTAL & VERTICAL GRAB BARS IN CONFIGURATION SHOWN
06	MIRROR- 24x36	BRADLEY	747-2436	OFCI	FRAMELESS MIRROR W/ CLIP FASTENERS
07	COAT HOOK	PETER PEPPER	2076	OFCI	SURFACE MOUNTED
08	BABY CHANGING STATION	KOALA	K8200-00	OFCI	HORIZONTAL, CREAM/BEIGE

NOTE: ALL COAT HOOKS SHALL BE LOCATED ON WALL BEHIND THE DOOR SWING. (2) HOOKS PER LOCATION

EQUIPMENT SCHEDULE- CONDENSED			
NUMBER	DESCRIPTION	INSTALL	REMARKS
E1	UNDERCOUNTER FRIDGE	OFCI	MUST BE ADA SIZED
E2	MICROWAVE	OFCI	
E3	COFFEE MAKER	OFCI	HARD PIPED
E4	FULL SIZE REFRIGERATOR	OFCI	
E5	ICE AND WATER DISPENSER	OFCI	
E6	WASTE RECEPTACLE - RESTROOMS	OFCI	
E7	TRASH CONTAINER	OFCI	
E8	TRASH RECEPTACLE - SMALL	OFCI	
E10	COPIER	OFCI	
E11	SHRED IT	OFCI	
E12	WALL MOUNTED TACK BOARD	OFCI	
E13	SPECIMEN PASS THROUGH	OFCI	RECESSED
E14	CENTRIFUGE	OFCI	
E15	SHARPS	OFCI	
E16	GLOVES BOX	OFCI	3 BOX
E17	MDS	OFCI	
E18	SUPPLY CART	OFCI	
E19	FULL SIZED MEDICAL REFRIGERATOR	OFCI	
E20	SAFE	OFCI	
E21	FLAT SCREEN TV	OFCI	
E22	WALL MOUNTED AED	OFCI	
E23	DRYER	OFCI	
E24	WASHER	OFCI	
E25	EXAM TABLE	OFCI	
E26	HAND SANITIZER	OFCI	

KEYNOTE LEGEND	
A03	ROOF LADDER TO HATCH ABOVE
A04	OFCI MAILBOX SYSTEM. PROVIDE IN WALL BLOCKING AS REQUIRED. GC TO COORDINATE WITH OWNER
A05	WALL SHALL ACCOMMODATE BRACKETS TO HANG 650LB TRANSFORMER FROM STRUCTURE ABOVE
A06	SEMI-RECESSED FIRE EXTINGUISHER CABINET.
A07	XBRACING AS PER STRUCTURAL
A10	CANOPY ABOVE

BSA
BSA LifeStructures
6601 College Blvd, Suite 100
Overland Park, KS 66211
ph 913.402.1100 fx 317.819.7288

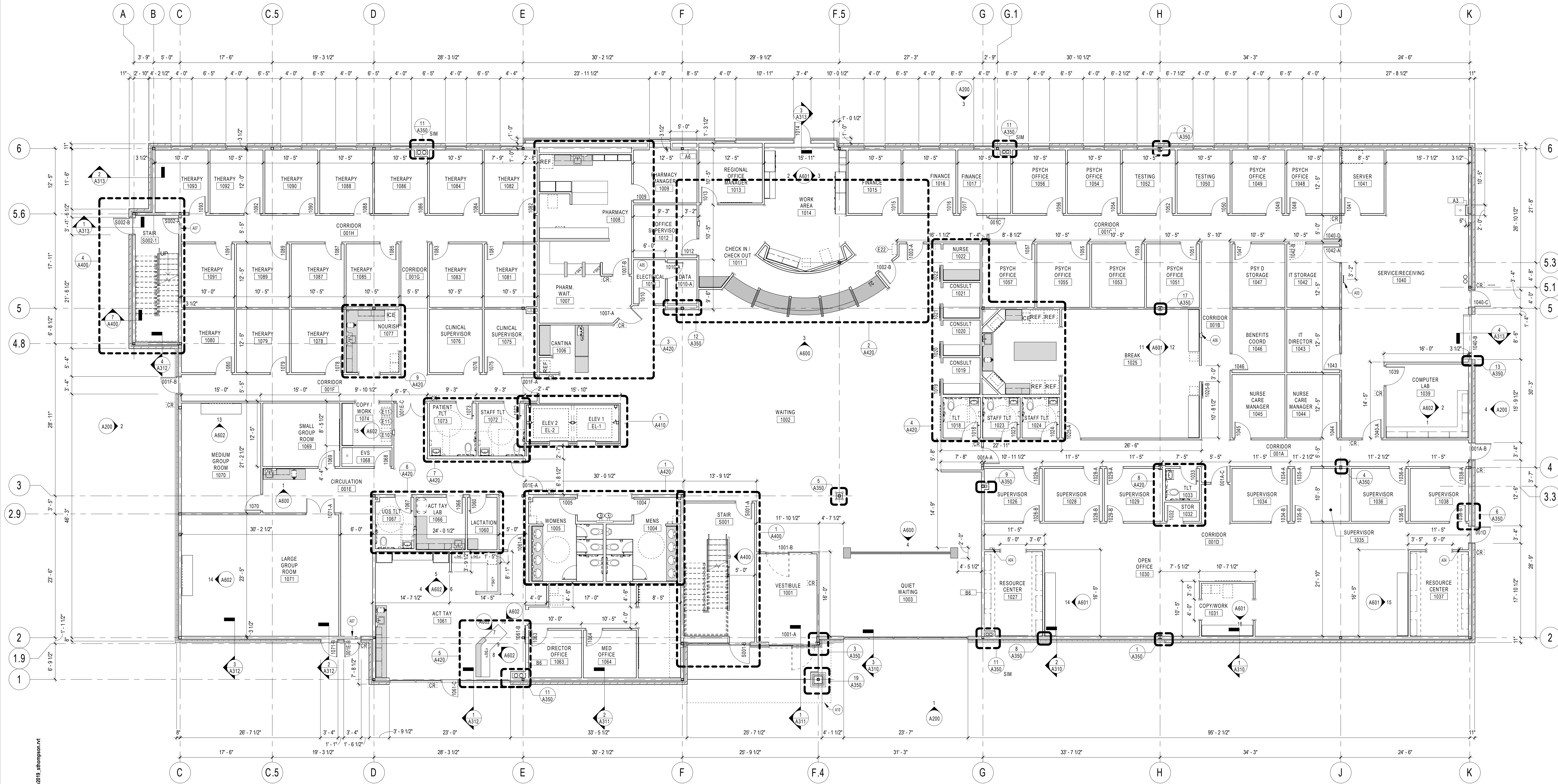
BOB D. CAMPBELL & CO.
Structural Engineers Since 1957
4338 Bellevue Ave. 816.531.4144
Kansas City, MO 64111 www.bdc-engrs.com

BRACK ASSOCIATES
CONSULTING ENGINEERS

BHC RHODES
Civil Engineering • Surveying • Utilities

Compass Health Network

RAYMORE BEHAVIORAL HEALTH CLINIC
CLIENT PROJECT NO. - 2066
CONSTRUCTION DOCUMENTS
100%



MARK	DATE	DESCRIPTION

TRUE NORTH
1 FIRST FLOOR ARCHITECTURAL PLAN
1/8" = 1'-0"

FIRST FLOOR PLAN

DATE: OCTOBER 16, 2019
BSALS PROJECT NO.: 2066002

A110

10/24/2019 8:21:35 PM
 C:\Users\jshampson\Documents\2066002-ARCH\BSALS CENTRAL_2019\shampson.rvt
 DESIGNED: jshampson
 CHECKED: jshampson
 APPROVED: jshampson

TOILET ACCESSORIES					
NUMBER	DESCRIPTION	MANUF.	MODEL	INSTALL	REMARKS
01	TOILET TISSUE DISPENSER - SURFACE MOUNTED	-	-	OFCI	BY VENDOR
02	PAPER TOWEL DISP	-	-	OFCI	BY VENDOR
03	SOAP DISP	-	-	OFCI	BY VENDOR
04	SANITARY NAPKIN DISPOSAL - PARTITION MOUNTED	-	-	OFCI	BY VENDOR
05	GRAB BAR	BOBRICK	B-6806-18", B-6806-36", B-6806-42"	OFCI	PROVIDE HORIZONTAL & VERTICAL GRAB BARS IN CONFIGURATION SHOWN
06	MIRROR - 24x36	BRADLEY	747-2436	OFCI	FRAMELESS MIRROR W/ CLIP FASTENERS
07	COAT HOOK	PETER PEPPER	2076	OFCI	SURFACE MOUNTED
08	BABY CHANGING STATION	KOALA	KB200-00	OFCI	HORIZONTAL, CREAM/BEIGE

NOTE: ALL COAT HOOKS SHALL BE LOCATED ON WALL BEHIND THE DOOR SWING. (2) HOOKS PER LOCATION

EQUIPMENT SCHEDULE - CONDENSED			
NUMBER	DESCRIPTION	INSTALL	REMARKS
E1	UNDERCOUNTER FRIDGE	OFCI	MUST BE ADA SIZED
E2	MICROWAVE	OFCI	
E3	COFFEE MAKER	OFCI	HARD PIPED
E4	FULL SIZE REFRIGERATOR	OFCI	
E5	ICE AND WATER DISPENSER	OFCI	
E6	WASTE RECEPTACLE - RESTROOMS	OFCI	
E7	TRASH CONTAINER	OFCI	
E8	TRASH RECEPTACLE - SMALL	OFCI	
E10	COPIER	OFCI	
E11	SHRED IT	OFCI	
E12	WALL MOUNTED TACK BOARD	OFCI	
E13	SPECIMEN PASS THROUGH	OFCI	RECESSED
E14	CENTRIFUGE	OFCI	
E15	SHARPS	OFCI	
E16	GLOVES BOX	OFCI	3 BOX
E17	MDS	OFCI	
E18	SUPPLY CART	OFCI	
E19	FULL SIZED MEDICAL REFRIGERATOR	OFCI	
E20	SAFE	OFCI	
E21	FLAT SCREEN TV	OFCI	
E22	WALL MOUNTED AED	OFCI	
E23	DRYER	OFCI	
E24	WASHER	OFCI	
E25	EXAM TABLE	OFCI	
E26	HAND SANITIZER	OFCI	

KEYNOTE LEGEND	
A03	ROOF LADDER TO HATCH ABOVE
A08	SEMI-RECESSED FIRE EXTINGUISHER CABINET
A09	IN WALL BLOCKING TO 8'-0" AFF AT PANO. COORDINATE WITH OWNER VENDOR DRAWINGS
A09	DENTAL EQUIPMENT SHOWN FOR REFERENCE ONLY. COORDINATE WITH OWNER VENDOR DRAWINGS

BSA
BSA LifeStructures
6601 College Blvd, Suite 100
Overland Park, KS 66211
ph 913.402.1100 fx 317.819.7288

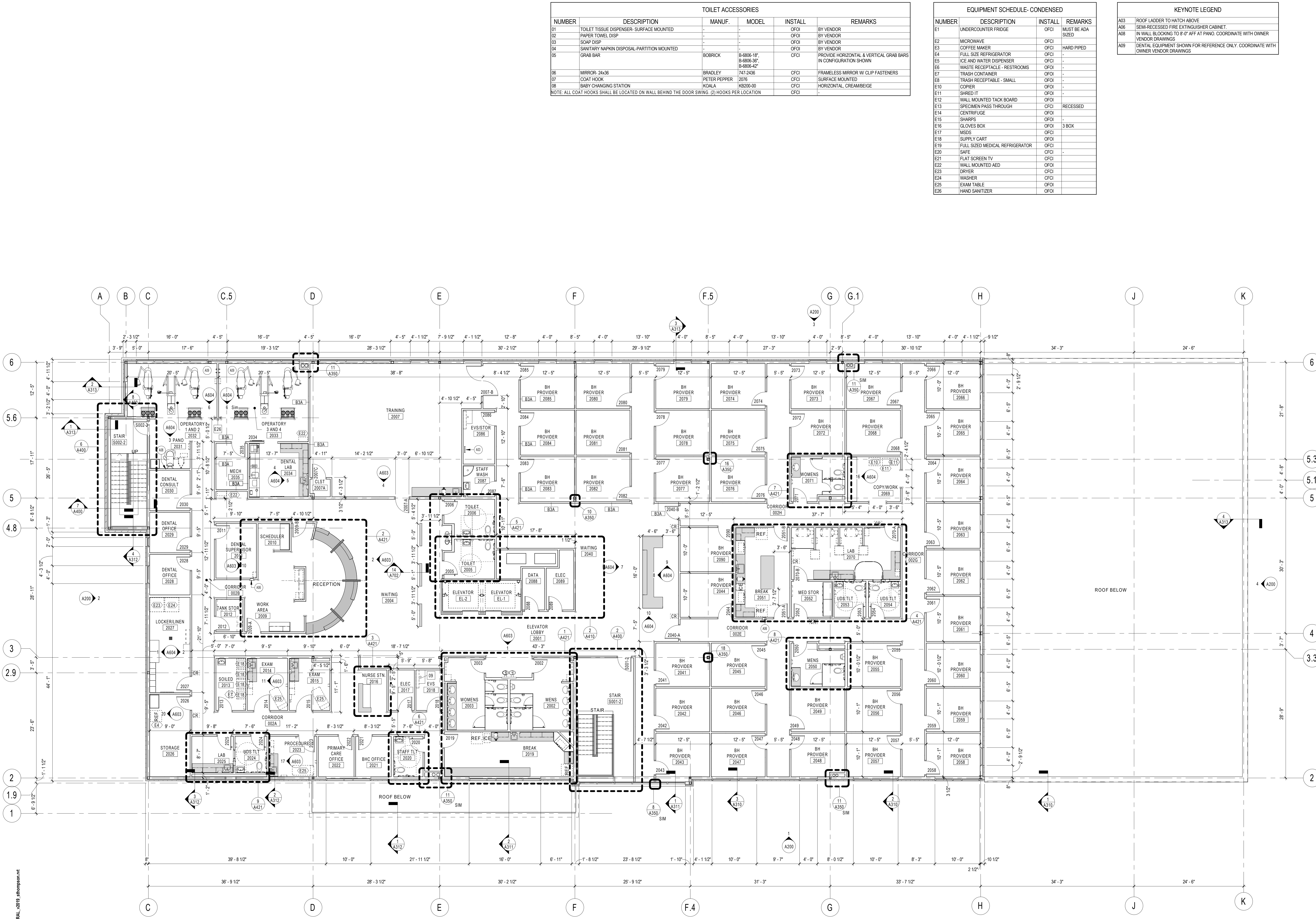
BOB D. CAMPBELL & CO.
Structural Engineers Since 1957
4338 Bellevue Ave. 816.531.4144
Kansas City, MO 64111 www.bdc-engrs.com

BRACK ASSOCIATES
CONSULTING ENGINEERS

BHC RHODES
Civil Engineering • Surveying • Utilities

Compass Health Network

RAYMORE BEHAVIORAL HEALTH CLINIC
CLIENT PROJECT NO. - 2066
CONSTRUCTION DOCUMENTS
100%



MARK	DATE	DESCRIPTION

SECOND FLOOR PLAN

1 SECOND FLOOR ARCHITECTURAL PLAN
1/8" = 1'-0"
TRUE NORTH

DATE: OCTOBER 16, 2019
BSALS PROJECT NO.: 2066002

A120

10/20/2019 8:22:08 PM
D:\Users\shampson\Documents\2066002\ARCH\BSALS_CENTRAL_2019_shampson.rvt
SHAMPSON
08/20/2019
APPROVED