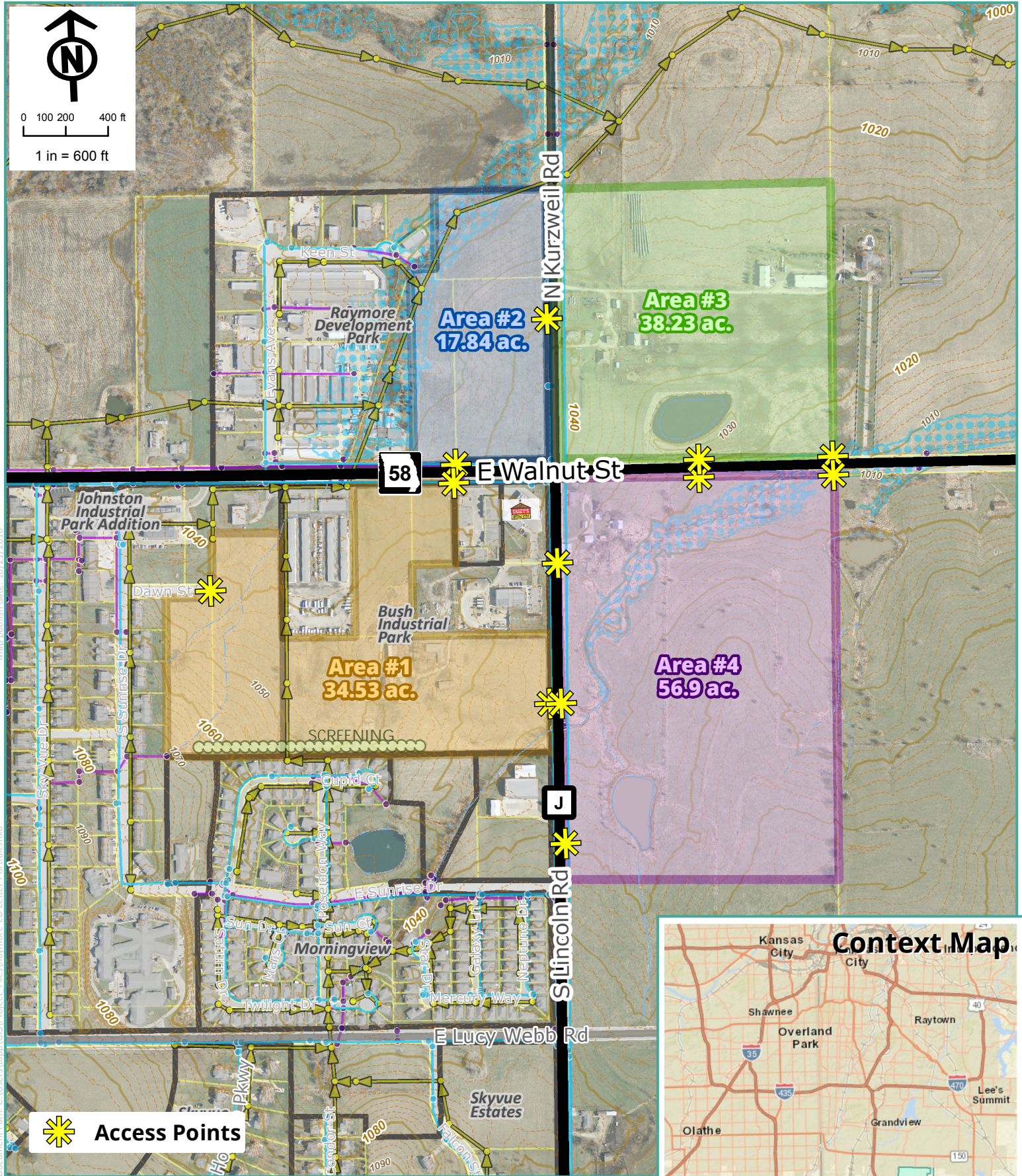
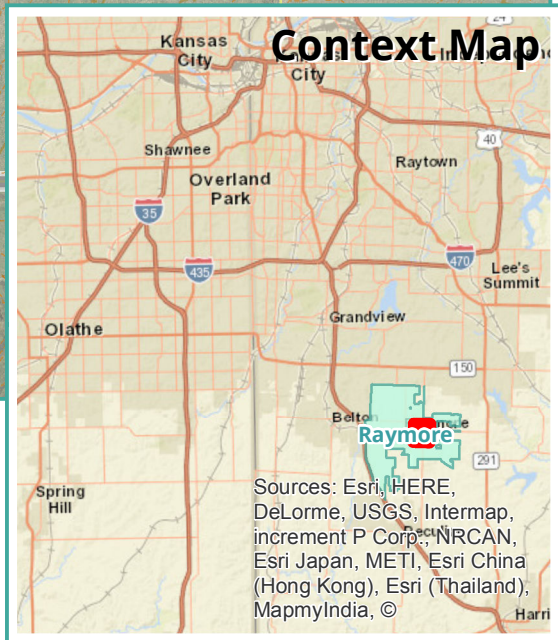




0 100 200 400 ft
1 in = 600 ft



 Access Points



East Side Industrial

City of Raymore, Missouri

Economic Development Department

Sources: Esri, HERE, DeLorme, USGS, Intermap, increment P Corp., NRCAN, Esri Japan, METI, Esri China (Hong Kong), Esri (Thailand), MapmyIndia, ©

Map publish date: 10/21/2016

Document Path: C:\Users\japp\GIS\Project_Files\Raymore-ED\Letter-Portrait.mxd