

# CENTERVIEW



**YOUR NEXT BIG EVENT STARTS **HERE****

# ELEGANT & MODERN

## YOUR EVENT, YOUR COMMUNITY.

Centerview is designed to provide seamless indoor and outdoor spaces that can accommodate any event in any season and make your day truly unforgettable.

Whether you are planning a meeting for a few, a wedding for 200 or a training conference for 300+, the unique style and affordability of Centerview makes it the perfect place to host your next event.

Our catering kitchen and serving area provide ample space to serve your guests and offer dramatic views of the grove and outdoor patio area.

Centerview also offers state-of-the-art sound and audio-visual systems as add-on options with your rental.



## NOTES

---

---

---

---

---

---

---

---



# LAYOUT

## HARRELSON HALL

Centerview's main hall can hold 240 seated at our round tables or more than 400 in a lecture-style arrangement. The room can be divided into two smaller rooms (Harrelson A and Harrelson B) for a more intimate feel for your event.

## GILMORE ROOM

This meeting space can hold 16 in a seated classroom style or accommodate any preparation that might be needed for the main hall during your event.

## PATIO & GROVE

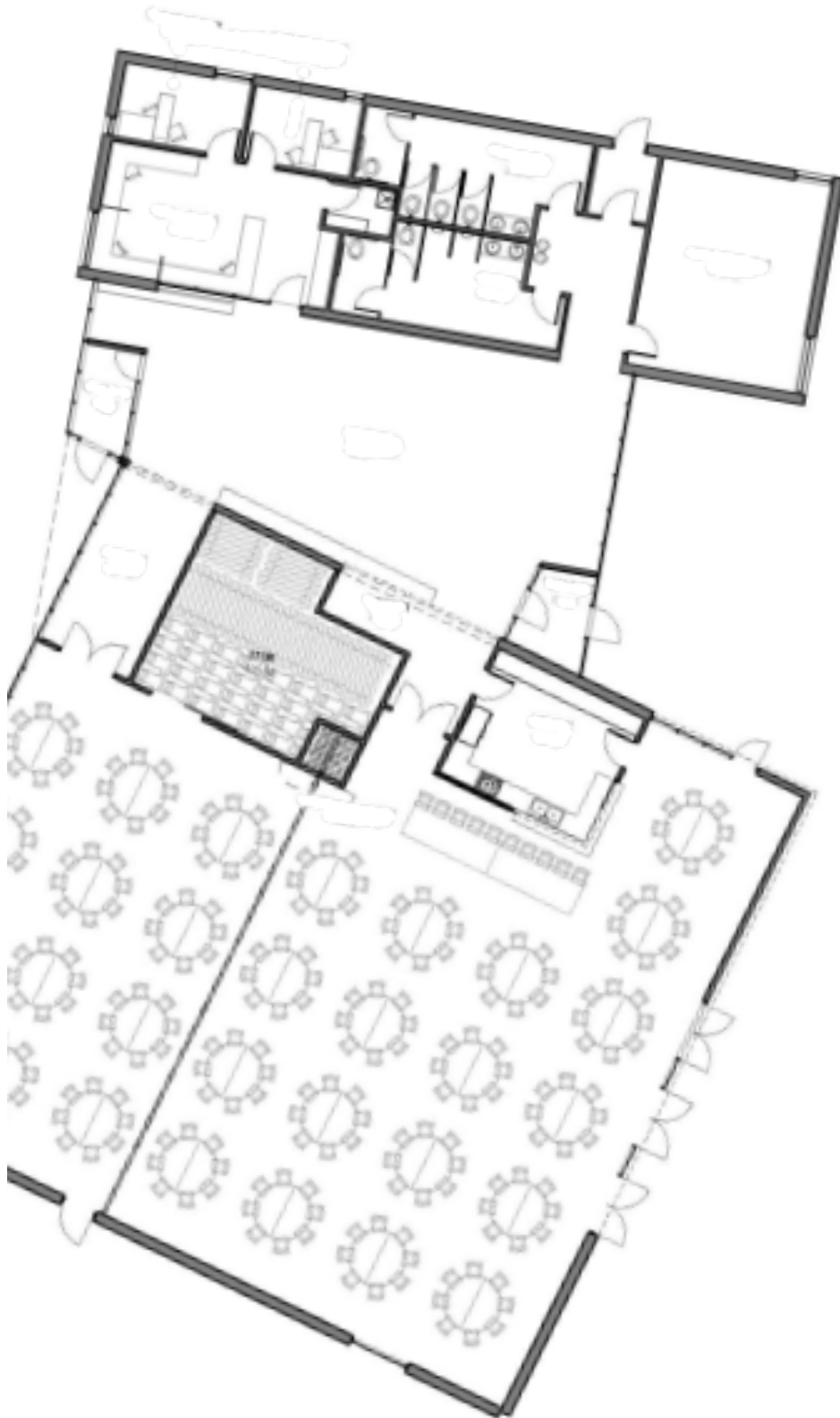
The outdoor patio and grove can be used for additional seating and overflow during your event. The soft lighting under the pergola and fire pit create a cozy ambiance.

## LOBBY

The lobby is the perfect space for gifts, food, or just an area for your guests to step away from the festivities and still be close to all the action.

## KITCHEN

Whether you are hosting a potluck or bringing in a five-star caterer, the kitchen and bar provide the ideal spot to serve your meal without putting the kitchen right in the middle of your event. Kitchen amenities include a double door industrial refrigerator, two small freezers, electronic induction food top, commercial 3-compartment sink, additional single sink and an ice maker.



# PRICING\*

Whether your event is large or small, there's an option for everyone.

Centerview rates are hourly with a minimum rental of two hours during non-prime times and four hours during prime time hours.

### Non-Prime Time

Monday-Thursday, 8 a.m.-10 p.m.  
Friday, 8 a.m.-4 p.m.

### Prime Time

Friday, 6 p.m.-midnight  
Saturday-Sunday, 9 a.m.-midnight  
Listed holiday

Additional fees may apply depending on the size of the event and additional services requested. Contact us for more information on pricing and availability.



## MAKE YOUR RESERVATION

Raymore Parks & Recreation  
227 Municipal Circle  
816-322-2791

[raymore.com/centerview](http://raymore.com/centerview)

### CENTERVIEW - FULL FACILITY

	<b>Resident</b>	<b>Non-resident</b>
Non-Prime Rate	\$150/hr	\$200/hr
Prime Rate	\$225/hr	\$275/hr

**HARRELSON HALL** - Capacity: 240 w/tables or 400 seating only. Includes catering kitchen.

	<b>Resident</b>	<b>Non-resident</b>
Non-Prime Rate	\$100/hr	\$150/hr
Prime Rate	\$175/hr	\$225/hr

**HARRELSON HALL A** - Capacity: 96 with tables or 154 seating only.

	<b>Resident</b>	<b>Non-resident</b>
Non-Prime Rate	\$60/hr	\$95/hr
Prime Rate	\$85/hr	\$120/hr

**HARRELSON HALL B** - Capacity: 144 with tables or 242 seating only. Includes catering kitchen.

	<b>Resident</b>	<b>Non-resident</b>
Non-Prime Rate	\$75/hr	\$110/hr
Prime Rate	\$120/hr	\$155/hr

**GILMORE ROOM** - Capacity 16: with tables or seating only.

	<b>Resident</b>	<b>Non-resident</b>
Non-Prime Rate	\$25/hr	\$50/hr
Prime Rate	\$60/hr	\$85/hr

### THE GROVE - OUTDOOR PATIO & LAWN

	<b>Resident</b>	<b>Non-resident</b>
Non-Prime Rate	\$25/hr	\$50/hr
Prime Rate	\$60/hr	\$85/hr

\*These rates are valid through the year 2020.